

20¢

The Belleville Times

News

THOUGHT OF THE WEEK

"Teach your child to hold his tongue; he'll learn fast enough to speak."
— Benjamin Franklin

Vol. 63, No. 2

Second Class Postage
Paid at Newark, N.J.

Belleville, N.J. 07109

Thursday, December 9, 1971

Telephone (201) 759-3200



VARSITY CLUB BANQUET last Friday evening at the Robin Hood Inn, Clifton, (l-r) Joe Lotruglio and Michael Pici present special gift to Bill Ellis, club president. A full page of pix features on page 15.

Blaze Destroys Store On Washington Avenue

A smoldering fire early Saturday evening completely destroyed the merchandise of a Belleville business and threatened the entire area of Washington Avenue's shopping center before firemen extinguished the blaze.

Fire officials report that Mary Dell's Fashions, 155 Washington Avenue was "a total loss." Two adjacent businesses, Joseph's Mens Shop and Sherman's Childrens Wear also received smoke damage but were open for business as usual Monday morning.

Fire Chief Carl Hundertpfund reports the blaze began about 6:15 p.m. Saturday. Firemen were alerted after a passerby saw smoke coming out of the building. A complete unit of fire fighting equipment arrived at the scene in less than five minutes with Deputy Chief

Joseph Santiglia in charge.

"Because of the high fire risk area we dispatched our entire complement of equipment to the area," said Chief Hundertpfund.

Fire officials suspect an overhead heater for starting the blaze. An investigation of the incident showed that the fire started in the heating unit and quickly spread down the walls and to the floor stock. Mary Dell's Fashions, a ladies wear store owned by Mrs. Carmella Pull of Belleville, will most likely be completely refurbished and may open in the near future. All other stores along the avenue are open for business.

A total of 22 firemen fought the blaze that was completely extinguished by 9:45 p.m.



BOARDING UP windows of Mary Dell's Fashions on Washington Avenue is crew of construction workers. A blaze completely destroyed the stock of the store Saturday and threatened the entire business community there.

Earnings On Increase

Local Families Move Up Income Ladder

To what extent have Belleville families moved upward on the income ladder in recent years by virtue of their increased earning capacity?

Where do they stand, as a result, in relation to families in other areas?

According to a nationwide survey of income distribution, a greater proportion of them are now to be found in the "over \$8,000" brackets and a smaller proportion in the lower brackets than ever before. There has been a progressive shift upward, from group to group.

The changes are detailed in a copyrighted report, covering the entire country, released by Sales Management, the marketing publication. It lists the percentage of households in each income category.

The purpose of the breakdown was to gain a better understanding of each community's purchasing power than was possible through its average income figure alone.

It shows whether there are a small number of high income families making up for a large number with low incomes or whether earnings are more equally distributed.

In Belleville, it appears, the average is high and the distribution relatively good.

Locally, during the past year, some 90.5 percent of all households had disposable cash of \$5,000 or more left out of their incomes after taking care of their personal taxes.

The proportion was larger than that reported for the United States as a whole, 71.6 percent. In the State of New Jersey it was 81.8 percent.

Because the figures refer to cash income only, they understate somewhat the situation in farm areas where, in lieu of cash, there are special advantages in the form of lower living costs.

With respect to other income groups in Belleville, the report shows that there are 18.6 percent of the households in the \$5,000 to \$8,000 bracket and 19.8 percent in the \$8,000 to \$10,000 group. Those with net incomes over \$10,000 total 52.1 percent. The others have \$5,000 or less remaining after taxes.

Although incomes have been on the rise locally, a considerable part of the benefit has been lost, due to the steady rise in living costs.

Santa's Mail Box

Belleville children will again get the opportunity this year to write special letters to Santa Claus. The Recreation Department has placed special mail boxes at strategic locations in Town to be used by youths.

The two locations are the mail box at the Silver Lake Fire House on Franklin Street and the Town Hall box. Santa's mail boxes are bright red and are labeled for easy identification for children.

They are as follows; 1-A fence will be erected surrounding the property, with a gate on the western side near Erie Lackawanna railroad for access by fire vehicles, 2-A swimming pool is to be included by the plans in the center of the complex, 3-As a result of a lack of sufficient parking created by erection of the pool an easement is to be given Belleville tenants in order to park across the Nutley line, 4 Entrances are to be widened on the Main Street

Crowe Is Named Jergens Manager

William R. Crowe has been elected manager of the Belleville plant of The Andrew Jergens Company, it was announced today by William Hausberg, president.

A Jergens' employee since 1951, Crowe has served at the Belleville plant since 1959 as industrial engineer and as assistant plant manager. He succeeds William F. Gausmann who has been elected vice president materials and distribution and assigned to

(Continued on Page 5)

Chanukah To Begin Sunday

This year the Jewish festival of Chanukah begins Sunday evening with the lighting of the first candle, and continues for eight days with the lighting of an additional candle each evening until the following Sunday.

Rabbi Herbert Horowitz, spiritual leader of Congregation Ahavath Achim, 125 Academy Street, Belleville, has captured the season with the following article. Chanukah concludes on Sunday, Dec. 19, when eight candles are lit with the singing of a blessing on the kindling of the Chanukah candles.

Synagogue officials report that all items for the festive celebration of Chanukah, including Menorahs, candles, decorations, gifts, Israeli giftware and other religious items, are for sale by the Sisterhood of Congregation Ahavath Achim Gift Shop. Interested persons may contact the synagogue for further information.

The article by Rabbi Herbert Horowitz entitled "Chanukah 1971: The Continuing Struggle Against Tyranny" follows:

The twenty-fifth day of the Hebrew month of Kislev marks the celebration of the eight days of Chanukah or Dedication, in commemoration of the victories of the Maccabees over Antiochus.

(Continued on Page 5)

To Build Next Month

432-Unit Apartment Complex Plan Okayed

Construction is expected to begin early in January on Belleville's largest apartment complex. The 216-unit complex is part of a 432-unit plan on Main Street, centered on the Nutley-Belleville line.

In a 4-1 vote the Belleville Zoning Board of Adjustments Thursday approved the application of Frank M. Leo Affiliates to build the complex. Fred Berlazzi, member of the Zoning Board cast the only dissenting vote.

Leo had originally brought the appeal before the Board November 4 at which time the members voted to reserve a decision until last Thursday. It had been presumed, in light of several comments by board members, that if the variance were granted there would be certain stipulations riding on the favorable decision. In approving Leo's request, the Zoning Board laid out a set of five conditions that were to be met by the builders before construction could begin.

entrance from 20 to 22 feet for easier access, and 5-In accordance with town regulations, storm and waste sewer networks are to be constructed throughout the complex.

In accepting the above points, Leo explained that all were "within reason" and in fact many were desirable.

Nutley has already granted the variance and subsequent building permits were drawn up. Lee Harris Pomeroy, architect for Leo will finalize the plans which will be submitted to Trenton for approval.

Leo didn't foresee any prolonged wait before construction begins. "Hopefully we can begin construction by the start of 1972," he speculated, "but there is still much work to be done before the apartments go up." Existing industrial buildings, long unused, will be torn down, and according to Leo weather will play a large part in construction.

"If everything goes according to plan," Leo added, "I would project completion of

the complex by early-1973." If the State Division of Housing grants building permission, then Belleville town engineers will issue the required building permits.

"Obviously we're very happy that Belleville saw fit to grant us a variance to build the apartments," Leo commented. "It is my belief, from my experience, this complex will enhance both Nutley and Belleville, bring in new citizens, and help ease the tax burdens of the town by providing increased revenue."

Silver Lake Bus Line Slack Is Picked Up By Rerouting Transit

Commissioner George M. Wallhauser, Jr. for the Board of Public Utility Commissioners will require Transport of New Jersey (formerly Public Service Coordinated Transport) to extend the No. 13 Broad Line and the No. 15 Passaic Route to provide substantially the same service to Belleville and Bloomfield residents as is now being provided by the Belleville-Silver Lake route No. 37.

Financial testimony at the hearings indicated that the No. 37 route was not even hour. That out-of-pocket cost includes only driver's wages and the cost of tires, tubes, fuel, maintenance and repairs. On the No. 37 route the average hourly revenue in 1970 was \$6.70.

Transport of New Jersey suffered a financial loss in excess of \$3 million on its overall operations in 1970 and higher losses have been predicted for 1971. While it was indicated that the No. 37 route could not be made profitable, other testimony at the hearing showed strong public demand for continuation of the service.

The PUC therefore determined that both the financial requirements of Transport of New Jersey and the public need could be served if route No. 37 was discontinued but its services offered by extensions of two other routes.

Service will be provided as follows:

1) The No. 13 Broad Line will be extended to leave the regular route at Washington Avenue and Greylock Parkway, Belleville, thence via Greylock Parkway, Passaic Avenue, Joralemon Street, Wilber Street, Liberty Street.

and Franklin Avenue, to Joralemon Street.

2) The No. 15 Passaic route will be extended along Franklin Avenue, Belleville from the City subway over the regular No. 37 Belleville Route to the present terminus at Bloomfield Avenue, Newark.

State Attorney Post To Frank Pomaco

Frank Pomaco, son of Mr. and Mrs. Vito Pomaco of 50 Mary Street, Belleville, was formally sworn in as an attorney of the State of New Jersey on November 30 in Trenton.

Pomaco received his juris doctorate degree from Seton

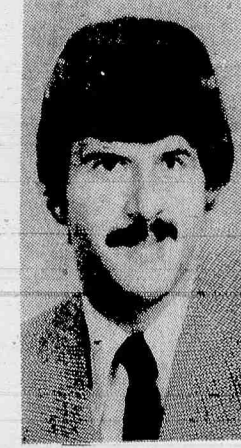
Hall Law School in May, 1971 and successfully passed the State Bar examinations on his first attempt.

While at Seton Hall Law School, Pomaco was the comments editor of The Law Review and ranked in the top five per cent of his class. He holds a BS degree from Fairleigh Dickinson University, where he graduated magna cum laude in 1968, ranking first in the School of Business. Pomaco is a graduate of Belleville High School, where he was a member of the National Honor Society, vice president of the Student Council and a member of the football team.

Pomaco is currently serving as law clerk to the Hon. Samuel A. Lerner, assignment judge, Hudson County, Superior Court, Law Division and plans to enter private practice next year. He presently resides with his wife Olga at 511 Franklin Avenue, Belleville.



William R. Crowe



Frank Pomaco

PTA, School Five Officials Join For Intercom System



NEW INTERCOM SYSTEM is viewed by the two persons who were the driving force behind the effort, Mrs. Pat Barbone, PTA president, and Archibald Gallombardo, School No. Five principal.

School No. Five on Greylock Parkway needed an intercom system. Last year a pupil there became seriously ill in the classroom and because of no direct communications between the main office and a teacher there was almost a fatal incident.

Parents and school officials were so upset by the incident that they decided to do something about the lack of a direct line between teacher and principal. Now, almost a year later, through the joint efforts of the Parent-Teacher Association and school officials, School Five has its intercom system.

"We have the largest elementary school enrollment in Belleville so a direct line between the main office and the classroom is a necessity," said Archibald Gallombardo, principal of the school and the man who headed the intercom project.

The PTA and School Five officials bore 85 per cent of the total cost for the system while the Belleville Board of Education added the remaining 15 per cent. It took two months for the Electronics Sound Company of Riverdale to install the intercom. With 28 stations,

(Continued on Page 5)



DISEMBARKING at McCoy Air Force Base in Orlando, Fla., at the beginning of an exciting day at Walt Disney World for 90 Essex and Hudson youngsters representing 22 United Community Fund agencies are over 200 area youths.

Area UCF Youngseters Fly To Disney World

Over 90 Newark area youngsters representing a cross-section of United Community Fund agencies were flown November 16, to Walt Disney World in Orlando, Fla. for the day via an Eastern Airlines 747 from Kennedy Airport. The 90 New Jersey youngsters joined forces with 200 New York City children, all part of United Way's Magic Kingdom Special—an airlift for 1,000 disadvantaged children from 10 of our major cities—including Chicago, Boston, Baltimore, Atlanta, Washington, Miami and San Juan, Philadelphia, Newark and New York.

The logistic of transporting, feeding and chaperoning the 1,000 children, special charter flights, 500 standby hotel rooms, 200 special guides, nurses, insurance coverage, etc., is a story of vast proportion; and it was a FIRST. Through the auspices of Eastern Airlines who hosted the event, using tickets given the Company as a participant and exhibitor at the Disney attraction, and a variety of vendors contributing food and gifts, and, with the help of Public Service Coordinated Transport who supplied 2 buses for the Newark contingent taking them to Kennedy Airport at 5:30 a.m., and bringing them back to Newark at 11:30 p.m., the trip became a reality.

For many of the children involved in the massive airlift, the experience was something they had never even dreamed of, and to actually ride on a jet plane they had only seen as an object in the sky, was something they'd not soon forget. Eastern airlines personnel, including over 100 off-duty stewardesses and pilots, volunteered to serve as guides for the day, taking groups of children on every conceivable ride and through the many lands represented at Walt Disney World. The trip through Disney World began at Main Street, U. S. A., the America of 70 years ago; then on to Adventureland; Frontierland; Liberty Square; Fantasyland; Tomorrowland and back to Main Street where they could choose between riding on horsedrawn streetcars or double-decker buses, fire engines or even horseless carriages, all of 1900's vintage.

The fun-filled day brought New Automobile Show Set In N.Y. In April

The 16th International Automobile Show, most widely publicized and most prestigious exhibition of its kind in the nation, is scheduled for April 1-9, 1972 at the New York Coliseum.

FLAT ROOFING SPECIALISTS
HARRISON & SON
ROOFING CO.
WY 1-3319 WY 1-5497

SERVICE SADSACKS
If you bought a Chrysler Corp. car elsewhere in N.J. or even out of state and cannot get proper service, SEE US! Fast Service, Warranty or Regular. Courteous. Efficient Service no matter where you bought your car.
BIGELOW MOTORS
Chrysler-Plymouth-Imperial-Valiant
30 Years at this Location
50 WASHINGTON AVE., BELLEVILLE
PL 1-5555

Celebrate Anything With Food From Towne

Fri., Sat., & Sun. Specials

1 lb. Hot Jewish Corned Beef
2 Fresh Kosher Pickles

Both Only **\$2.19**

1 lb. Breast of Turkey **\$2.19**

1 lb Genoa Salami **\$1.89**

1 lb. Cappicola **\$1.89**

All Specials By The Full Pound Only

Order Party Plans Now For Holidays from \$1.20 per person

Pick Up Your FREE Catering Brochure | FREE PARKING Open 365 Days A Year

Towne

DELICATESSEN

650 JORALEMON ST.
Cor. Franklin Ave., Belleville
PL 9-9870



Gouthro's JUVENILE FURNITURE

329 Broad St. Bloomfield

EVERYTHING FOR YOUR BABY

CRIBS from 34.95 CARRIAGES ..from 33.95
MATTRESSES... from 17.95 STROLLERS... from 9.95
Dressing Tables..from 19.95 HI-CHAIRS... from 19.95

BRANDS YOU KNOW AND TRUST!

Simmons—Child Craft—Thayer—Basset
Lullabye—Hedstrom—Bilt Rite—Kantweil

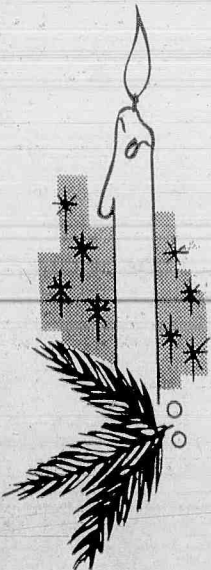
Open Daily 10 A.M. -5:30 Mon -Fri. 'til 9

FOR YOUR CONVENIENCE -CALL FOR AFTER HOURS APPOINTMENT
743-2395

Ample Parking • Gift Certificates
Free Delivery



Dramatic flowers burst into bloom...a stunning and warm Christmas gift from Schrank! Your holiday favorite!



A cozy gift ensemble, created by Schrank, permanent press flannel cotton and rayon blend, washes like a dream, garlanded with delectable ribbon-beading. Partnered with Fortrel® Polyester fiberfill handcloth robes. Predominantly pink, blue. Long gown, P. S. M. L. (\$9). Quilted Long Robe, P. S. M. L. (\$21). Shift gown, P. S. M. L. (\$8). Short Robe, P. S. M. L. (\$18). Choose hers today!

Janette Nutley Center Holiday Lingerie and Robes, Main Floor.

Janette Nutley Center

Charge accounts welcomed! Join our exclusive 1972 Christmas "Merchandise Club" Gift Certificates, of course! Beautifully gift packaged.

Park in the spacious Municipal Plaza and enter thru JNC's very convenient Rear Entrance! Remember, JNC features 45, yes (45) fabulous gift wrapps!

Yes! Christmas Holiday Shop Every Evening 'til 9 P.M.!

Women's Yule Party Planned for Thursday

Tri-Town Business and Professional Women's Club of Belleville, Bloomfield and Nutley will hold its annual Christmas party a week from today at the Park Methodist Church, Broad and Park Streets, Bloomfield.

The December 16 event is set for 6:30 p.m. and will feature entertainment under the aegis of Miss Alic Fleming of Wayne. The "Belles," bell ringers of the Verona Presbyterian Church, will be the evening's highlight.

Time Editor to Speak At Mass This Sunday

Mayo Mohs, religion editor of Time Magazine, will speak at the St. Thomas the Apostle Church 12:30 mass this Sunday. Mohs winds up a series of four guest speakers who addressed the congregation on the second Sundays of September, October and November. As with the previous three speakers of the "Second Sunday Series," Mohs will give a short talk at the mass followed by a reception short talk at Mass, followed by a reception, question and answer session and open discussion in Herron Hall at the St. Thomas School.

Previous speakers have been Sister Vivien, Mother General of the Caldwell Dominicans; Rev. Robert

Bradbury of the Broughton United Presbyterian Church, Bloomfield; and Rabbi Nathan Fish of Temple Menorah, also in Bloomfield.

The object of the series, which is run by the St. Thomas Adult Education Committee, is to increase the parishioner's awareness of new dimensions in religious thought.

Mohs is regarded as a leading observer and commentator on the religions of the world, and his recent Time Magazine essay, "Toward a More Fallible Church" has been widely acclaimed as one of the more perceptive statements on Roman Catholicism in recent years.

Area Bank To Award Scholarship

Two four-year college scholarships with a total value of \$8,000 will be awarded to two Essex or Warren county students this year by National Newark & Essex Bank, Gustave E. Weidenmayer, chairman and chief executive officer, has announced.

The National Newark scholarship competition, now in its 19th year, is open to any resident of either county who will graduate from a secondary school in 1972. Each award provides \$1,000 a year for four years of college study. Winners may attend the college of their choice.

A committee of distinguished educators will evaluate the applicants. Scholastic ability and promise, school and community activities, citizenship, and leadership demonstrated at school, and the need for financial aid will be among the factors that will be considered. The awards will be made in May.

National Newark established the scholarships in 1954 to mark the bank's 150th anniversary.

For Migration Work

Rodino Congratulated By President Nixon

Rep. Peter W. Rodino, Jr., Chairman of the Twentieth Anniversary session of the Intergovernmental Committee for European Migration, announced today that President Nixon sent a personal message to the Geneva meeting, commending ICEM for two decades of outstanding humanitarian work.

Rodino, who was elected to chair the important anniversary session which concluded its work December 3, said today, "it was indeed a rewarding experience to serve as Chairman of this indispensable organization and I am extremely gratified that President Nixon paid a personal tribute to ICEM on the occasion of its 20th Anniversary."

"ICEM, a 31-nation body, is certainly grateful to the President for manifesting his special interest in the affairs of the organization," Rodino added.

"Furthermore," Rodino continued, "I appreciate the President's observation contained in his message, that ICEM is an organization fulfilling the belief of the United

States in the principle of freedom of movement - the right of man to move from his own land should he feel that resettlement would enhance his future and that of his family."

"Likewise," Rodino said, "I concur wholeheartedly in the President's statement that ICEM is the type of organization that personified my belief that humanitarian assistance to countries can best be handled in the international community on a multi-lateral basis. The successful operation of ICEM illustrates, in my mind, the need for, and efficacy of, international cooperation in solving world-wide problems."

Dentists And Kiwanis Sponsor Window Painting

The Essex County Dental Society and the Kiwanis Clubs of Essex County will co-sponsor a store front window painting contest depicting a dental theme "Happiness is a Healthy Mouth," in observance of National Children's Dental Health Week, February 6-12, 1972.

*Gifts that will make him feel
He's Someone Special...*

*The Best Name Brands
in the widest range
sizes...*

SUITS
TOP COATS
SPORT COATS
SUR COATS
ALL WEATHER
COATS
SHIRTS
NECKWEAR

SCARFS

ROBES

SLACKS

BANLONS

HOSE

GLOVES

SUPP HOSE

BELTS

PAJAMAS

UNDERWEAR

BELL BOTTOMS

SKINNY RIB SHIRTS

BODY SHIRTS

ANK TOPS SWEATERS

TOTE FOLDING UMBRELLAS

JEWELRY - WALLET - TOTES - HANKS

Credit Plans Accepted
Master Charge
Shopper Charge
Data Credit



Alterations
in Time For Holidays

Franklin MEN'S SHOP
228 FRANKLIN AVE.
NUTLEY 667-0189

OPEN EVERY NIGHT TO 9 UNTIL CHRISTMAS
(Except Sat.)

Use Our XMAS LAY A WAY PLAN

Magnavox
*holiday
specials*

SAVE
\$31

SAVE
ON
OVER 50
MAGNIFICENT
ENTERTAINMENT
VALUES

BUY
NOW

...on each of these

**SOLID-STATE
STEREO FM/AM
RADIO-PHONOS**

Your Choice

NOW \$198

Perfect for smaller rooms or apartments, these outstanding Magnavox values offer performance far in excess of their modest cost. Small only in size (36" wide), their big sound, great tonal quality and extra-value features will delight you. Each has 10-Watts EIA music power, four speakers that project sound from both sides and front, plus a precision Automatic Mark I record player. There's even record storage. A. Contemporary—model 3320. B. Early American—model 3322. C. Mediterranean styling—model 3323.

Available less stereo FM/AM radio...

SAVE \$31 NOW \$148

SAVE
UP TO
\$101

... during our Magnavox Holiday Specials event. See over 50 magnificent Magnavox sights and sounds all at exciting savings including Stereo consoles, components, portables, accessories... Total Automatic Color TV consoles, table models, portables... radios... tape recorders. All wonderful to own or give!

BECK'S BUDGET PLAN AVAILABLE
"We Service What We Sell"

BECK'S

DIRECT FACTORY DEALER

196 Franklin Ave.,
Nutley 667-4225

Christmas
Store Hours:
9 to 9 daily
Saturday 9 to 6

The Belleville Times

News

The Only Newspaper in the World Interested in Belleville, N.J.

Published Every Thursday at 246 Washington Avenue
Belleville, New Jersey, 07109, by The Belleville Times-News
(Subscription rates: One year \$6.00; Six months \$3.50; Three months \$2.00)

Telephone (201) 759-3200
FRANK A. ORECHIO, Publisher
JOHN J. BUNEVICH, News Editor

Black Liberation Banners

The Flag Controversy

The majority of the Newark Board of Education approved the display of black liberation flags in the public school classrooms.

The board member who introduced the resolution is Lawrence Hamm, Jr. In explaining the reason for his action Mr. Hamm stated, "blacks must turn to some other source for inspiration other than the American flag because of the way the Republican has treated them."

Another board member who voted with Hamm, Charles Bell, explained, "this was not anti-American, but pro-black."

The resolution in part reads, "due to the racist philosophy of this society and the racist orientation of the educational systems of this nation..."

The action and the language of the resolution are as un-American as any language or action could be.

We call upon Mayor Kenneth Gibson to request the resignation of the five board members who voted to adopt the resolution. If the language and intent of the resolution represents the thinking of a majority of the Newark Board of Education members, then Newark is headed for worse trouble ahead. The riot of 1967 will pale into insignificance compared with the potential future problems developing from the kind of thinking reflected in

the resolution which permits the display of black liberation flags in the public school system.

The responsible blacks of the community should be the first to voice violent objection to the action taken by young Hamm and his associates.

It is clear that Mayor Gibson's appointments to the Board of Education have not upgraded the content of our educational system and the only logical choice for citizens who believe in better schools for our pupils lies in the direction of an elected board of education.

But for now — it is imperative that Mayor Gibson request his appointees to resign from the board.

To be commended is member John Cervase who went to court and obtained a temporary injunction against the display of flags. It appears that Mr. Cervase is the lone voice on the Board of Education constantly seeking to steer the actions of the Board of Education toward the road of sanity. Mr. Cervase has earned the gratitude of Newark residents who truly believe in democracy and an elevation of school standards. If the manifestations of the Gibson era continue, Newark will soon end up one big ghetto.

The black liberation flag controversy is one of a number of manifestations from the black community that may well polarize political activity and pit

Black Against White

At the national level we read accounts that black members of the U.S. Congress are convening meetings to discuss their ethnic interests in terms of national political activity. At the state level similar activity is underway. The actions of black public officials in the City of Newark speak for themselves.

If the black community continues to divorce itself from the total human community, the ultimate result will probably lead to a fusion of white Democrats and Republicans fielding candidates for office against an all black ticket.

back the hands of time more than 100 years. Our state and nation cannot afford such a division. It behooves responsible black members of our community — both from the private and public senators to do everything in their power to avoid aiding and abetting efforts leading to divisions within our society.

This would be a tragedy and turn



By Frank A. Orechio

CHRISTMAS TIME IS UPON US once again and we are continuing the policy we adopted last year -we're mailing no Christmas cards, the holiday season is getting too commercial. To our friends we utilize this means of wishing them all a Merry Christmas and a Happy New Year.

THE HIPPOPOTAMUS RESTAURANT AND DISCOTHEQUE, formerly Arthurs famed discotheque frequented by Jackie Kennedy and the jet set, is now one of the major "in" places for visitors to New York City. Maitre d' Fernando Moreno is simply fantastic. Behind the bar Tony Moreno and Japanese born Eddie Hattori regale the customers with some of the finest jokes making the New York rounds. The head man running the kitchen staff at the Hippopotamus is Monsieur Andre Pernod formerly of the popular french restaurant Cafe Chavaron. The Hippopotamus displays no sign and if you don't know the address you will never find it.

ONE OF THE REASONS MIAMI INTERNATIONAL AIRPORT Eastern Airlines operations is as efficient as I have found it, is due to the leadership of Dick Bergner, Regional Director of Passenger Services. He insists that all Eastern Airlines employees under his command cross their t's and dot their i's.

I AM PLEASED TO LEARN THE NEWARK NEWS is expected to begin publication before the end of the year. Its presence in the homes and on the news stands, will be a nice Christmas gift.

CONGRATULATIONS ARE IN ORDER TO U.S. Attorney Herbert J. Stern upon his appointment to the permanent

post which he has held for ten months on a temporary basis. He succeeded Federal Judge Fred Lacey. Stern and Judge Lacey have been responsible for the conviction of more political crooks during the short term they have held the office of U.S. Attorney than were convicted during the terms of all former U.S. Attorneys for the District of New Jersey since the office was created. I supported Stern's appointment which was initiated by U.S. Senator Clifford P. Case. Two of the finest things that ever happened to New Jersey were the appointments of Fred Lacey and Herb Stern.

WITH A FIRM FINGER POINTING TO THE SIGN above the archway, the pretty little thing told her customer, "I'm sorry sir you'll note the service charge is 35%." Randy Nelson, the business woman who handles the hatchchecking chores at the famed Ali Baba East Restaurant on First Avenue in New York, was explaining to a guy on the make that his quarter tip was 10% below the posted service charge. In my travels I have met many hatchcheck girls but few are sharper and smarter than Randy.

BERGEN COUNTY ASSIGNMENT JUDGE MORRIS PASHMAN should be commended for his handling of the Edgar H. Smith, Jr. case. Based upon the record, Judge Pashman's decision was superb.

HIS FORMER COLLEAGUES AT NUTLEY HIGH are getting together to toast Alfred Lupien in his retirement. Lupien had been associated with the Nutley School System for 29 years and retired last June after serving more than six years as Administrator in the Nutley High School. Al was well liked by his fellow teachers and

Seems Only Yesterday Joralemon Street Finally Opened Again To Traffic

By Elaine Auerbach

One Year Ago

Preliminary construction on Joralemon Street was completed, and the renovated thoroughfare was open to traffic. Commissioner Mary Senatore, whose Department of Public Works supervised the \$69,000 renovation, told The Times that a final coating for the street would come in the spring because of complications resulting from heavy rain and other construction. Waiting out the winter before completing the job was seen as a positive factor in that the pavement would become compacted and soft spots could be corrected before the final layer was applied.

Arthur Pico, a sixth grade teacher at School Two, was appointed director of the Saturday morning remedial reading program. Pico was to take over the duties of Archibald Gallombardo, principal of School Five, who had resigned to concentrate on his principal's duties at that school, which had the largest enrollment of all the elementary schools. Pico's job would pay \$2,000. The program was composed of 190 children and 17 teachers, including 11 reading specialists.

The big explosion in Linden caused Lt. Carmine Zecca to have one of the busiest half-hours of his life. Lt. Zecca was manning the control desk at police headquarters when the Humble refinery blast shook the area and caused waves of fear within a 40 mile radius of the plant. About 400 panic stricken people called headquarters immediately after the explosion. "We had three men manning them (the phones) and the board was constantly lighted for a half-hour," Zecca said. Lt. Zecca had been assisted at the desk by Capt. James Mundy and Sgt. John Drop.

Five Years Ago

Jack Fersko, son of Mr. and Mrs. Seymour Fersko of 36 Van Reyper Place, received the "Ner Tamid" award at Sabbath services conducted at Congregation Ahavath Achim. Rabbi David Werb presented the award which is given to those scouts of the Jewish faith who prove themselves meritorious. "Ner Tamid," which means Eternal Light, represented the eternal light that hangs in front of the Holy Ark in the synagogue.

Kenneth R. Broo, of 132 Fairway Avenue, was re-elected president of the Belleville Public Library board of trustees. Broo, a library board member since 1960 and long active in local community and civic affairs, was to serve his second year as president. Elected with Broo was the Rev. Frederick Long and Mrs. Richard Shafter. They joined Mrs. Pat Fiore and John D. Boyd, other elected board members.

Diane Orio, of 286 Belmont Avenue, and Marie Verzett, of 196 Hornblower Avenue, were to perform as soloists in the Garden State Ballet's full length production of Tchaikovsky's "Nutcracker" to be presented at Symphony Hall. In a cast of 100, Miss Orio would be the soloist in the exotic Tea divertissement, and would also dance in the Snowflakes number. Miss Verlatt was to lead the Arabian dance.

Ten Years Ago

John Bass, President of the Rutan Estates Home Owners Association, called upon Mayor Isadore Padula and Commissioner Robert Gruhin to relinquish control of their respective departments "to permit an impartial and fair investigation" of the legality of Padula's Revenue Department's failure to tax the former synagogue property located on Washington Avenue and purchased by Gruhin in November, 1960. Bass stated: "It is high time our hallowed public officials recognized the simple fact of life that they have lost the public confidence."

John Zepka was elected president of the Kiwanis Club for the year 1962 at the regular meeting of the local organization. Victor Cali was elected 1st vice-president and Thomas McLaughlin, 2nd vice-president. Also elected directors for a three-year term were John McKean, Samuel Read, and Andy Province.

Official returns on a vote of confidence given to Ralph Vara, Democratic committee chairman by the town committee, was 31 for Vara, three against him, and three abstentions. The voting came after Vara had been accused of not giving full support to the entire Democratic ticket in the November election, because of his outspoken opposition to Dennis F. Carey, county chairman.

Twenty Five Years Ago

An Elk who took advantage of fraternal spirit to swindle his brother Elks with worthless checks found crime did not pay. The culprit, who had joined the club giving a false address, was arranged before Judge Smith in Newark and held in \$500 bail. The bandit, whom police claimed had a record a mile long, was apprehended by Nutley police through the alertness of a former Police Chief and the Exalted Ruler of the Elks Lodge.

The Board of Commissioners voted to approve the establishment of a five-man Advisory Planning Board in the near future. After some discussion, it was agreed that each commissioner would name a delegate to the Board to serve for an indefinite period. The new group would draft suggestions and plans and present them to the commissioners for approval.

The Freshman Class was sponsoring its first dance in the high school gym. A program of entertainment had been planned in addition to the dancing to the music of a popular orchestra. The decorations committee, adding a Christmas touch to the otherwise athletic looking gym, was composed of Peggy Watson, Marie Tino, Evelyn Bangeman, Marie Bruno, Frank Smith, Louis Paterno, Pauline Formato, Terry Nowack, Barbara Roselli, and Bill Lambert.

Fifty Years Ago

Mrs. Jennie Huxtable and her sister, Mrs. M. Cummings, of 28 Van Houten Place, returned from a visit of several days at Mattituck, Long Island.

Mrs. John Gunderman of 180 Union Avenue entertained the "So Do I" club at luncheon.

Christmas Cards Have Become Sign Of A Commercial Season

students. He did not plan to retire this year except for a fluke that got by the board of education. The new ratio which the board adopted this year resulted, in of all things a pay cut for Al. No one on the board or Dr. Fleischer, Superintendent of Schools, who recommended the ratio index were aware of the consequences of their action. Al Lupien gave the best years of his life to the Nutley

School System and the children of our community. His retirement should have been marked by one of the best testimonial dinners ever. Incidentally, Al Lupien's job has not been filled and the wonder is if the board can get along without filling the vacancy all these months, why not save the \$20,000 expenditure?



Randy Nelson



Herbert J. Stern

Speak Up! Cafeteria Letter Gets An Answer

To the Editor:

I am the cafeteria author as referred to by the cafeteria help in Belleville High. I recently wrote an article which Mr. Steve L. Rogers misinterpreted and challenged me to a debate in Dec. 2, 1971 paper. I know Mr. Rogers and I can't understand why he would be concerned about the High School Cafeteria since he has graduated already. However, I will correct some things Mr. Rogers said.

First, Belleville High Students have TWENTY TWO minutes for lunch not FORTY TO FORTY-FIVE as Mr. Rogers mentioned. Apparently he didn't get his facts straight. Nutley High has forty-five minutes for lunch and are allowed to leave the building whereas we cannot leave the cafeteria or rest rooms.

Second, we cannot have any food we want. This was the major point I was trying to point out. We buy a dinner and we are forced to take a vegetable whether we want them or not. This Mr. Rogers, may account for the food on the floor. It might be there because no one wanted to eat it. Another example is today I bought a dinner, pizza and French Fries. I ordered an extra plate of French Fries for my friend and because they looked good, I decided I would like "extra French Fries" for myself. I asked the lady for another plate and she wouldn't give it to me. Because I wrote the article a few weeks back I am well known to the cafeteria staff. The lady replied to me when I asked for the extra fries "You know what the government says." Well, I couldn't believe it. I was deprived of a plate of french fries.

Third, the lines are long and slow moving but Mr. Rogers pointed out that this is only true during the first five minute of the period. That would seem logical that when you enter the cafeteria the first thing that comes to your mind would be to buy food. If you wait til the line ends you are left with a whole fifteen minutes to eat.

I am not knocking the cafeteria staff, they do their jobs — and get it done well. If Mr. Rogers still feels that he wants a debate I'm willing. We could do it in High's auditorium if given permission.

One last comment, if you live near the high school are wondering why you don't hear the bells, it's because they have been broken for several days now. That's a modern school for you.

Roger Ross
Belleville High Senior

Program Working

To the Editor:

On behalf of all the girls of Girl Scout Troop No. 688 and all interested people of Belleville who have taken an active interest in the glass recycling program which takes place each Saturday from 9 am to 1 pm in the A & P Franklin Avenue parking lot, we wish to thank you from the bottom of our hearts. Without your complete cooperation, this program could not have lasted eight weeks and we hope it will continue indefinitely.

The enthusiasm of the people of Belleville has been fantastic, the work and interest of the youth has been overwhelming and the cooperation of the Public Works Dept. of Belleville is something that can not be put into words.

To Comm. Senatore, who has taken such an active interest in this ecology project, we owe a great deal of gratitude. To all the men of the Public Works Dept., who have put a backbreaking effort into this movement, what can we say but a mere "thank you."

We have been blessed by our creator with an environment which we should protect and thanks to all, we are making a small start. Perhaps recycling of glass is not the answer to saving our environment but maybe in a small way it is a start to making people aware.

To all of the Public Works Dept. of Belleville, we feel it is much too late to thank you for all you have done. From all the kind and interested people of Belleville and all the youths involved in this project, all we can say is, many thanks for many things.

Sincerely
Mrs. William Connelly, Jr.
24 Walnut Street, Belleville.

The Dog Ordinance

In the past week our family pet was put to sleep due to her inability to successfully deliver her puppies. This happened to be herehight litter in nine years of life. Why so many litters so frequently? Well the answer surely isn't because of our towns stringent enforcement of the ordinance concerning stray or loose dogs.

When on any given day during mating season there can be between two and six dogs hanging around our completely fenced-in yard, its quite obvious how effective our town is in enforcing the ordinance. It wouldn't be so bad if the stray male dogs remained outside the fence, but what they in fact did was climb over the fence and literally raped our family pet. As a result our dog's life was shortened by some three or four years. If our town enforced the ordinance our dog would be alive today.

Neighboring communities fine owners of dogs who so much as let them dirty in the streets. In our town owners of male dogs are allowed to let their dogs run at large without penalty. For the taxes that are paid by the residents of Belleville, enforcement of the ordinance should be maintained. I'm quite sure that owners of all female dogs in the town as well as non-owners would like to see an end to this problem.

Richard Carbone
10 Marion Court
Belleville

Events Behind Chanukah Told By Rabbi

Acting Dean Selected For Spring Semester

(Continued from Page 1)

Antiochus Epiphanes, King of Syria, Antiochus attempted through tyranny, oppression and the threat of death to force the Jews to accept idolatry, and to abandon the worship of the true God.

The Jewish people led by the courageous Maccabees resisted; they were armed with the vital force of freedom and faith in God. These

ideals propelled them toward an overwhelming victory against the larger armies of the enemy. The Temple was purified and cleansed, re-establishing the Service of God.

However, in order to light

the Ner Tamid (perpetual light) pure oil was needed, but only a small cruse of pure oil was discovered which was thought to contain enough oil for only one night. Miraculously, it burned for eight days, by which time a fresh supply could be found.

However, their spirit has been imbued with hope and courage from people of good will throughout the world. They are rising like the Maccabees of old and are struggling and battling for either a return to Jewish culture and heritage in the Soviet Union

or emigration to Israel where they can live life in dignity and freedom.

The struggle for freedom and the triumph of the forces of liberty in our times can become a reality today as in the days of the Maccabees.

This can be achieved only if men and women who cherish the freedom and dignity of man are strong and courageous.

Newark College of Engineering has announced that Dr. Saul I. Kreps of 40 Catherine Court, Cedar Grove, has been selected for the post of acting dean of the graduate division for the spring semester of 1972.

Ex-Spiritual Leader Named Vice-Chairman

Rubin R. Dobin, former rabbi of Congregation Ahavath Achim in Belleville for many years, has been appointed executive vice-chairman of Board of Overseers, Bar-Ilan University in Israel.

Rabbi Dobin, who was active in many local organizations during his long tenure in Belleville, is currently a resident of Lawrence, L. I.

The new position for Rabbi Dobin will consist of administration of all American operations of Bar-Ilan University, the only Israeli institution of higher learning chartered by the New York State of Regents. He will make his U. S. headquarters at the New York offices of the university, 641 Lexington Avenue.

Rabbi Dobin had previously been national director of special projects at the Jewish National Fund of America. He is and has been active in many national Jewish organizations.



Rubin R. Dobin

The Rabbis of the Talmud ask the question: Why is Chanukah celebrated? The answer they give applies to all humanity. The festival of light marks the triumph of light over darkness, of truth over falsehood, of morality and purity over the profane. It was in essence the triumph of the spirit of freedom over tyranny, of life over death.

The struggle against tyranny is a continuing saga for Jews on Chanukah, 1971. The three million Jews of the Soviet Union continue to live in spiritual darkness, unable to kindle the lights of freedom that the Maccabees so gallantly fought for. They are deprived of their cultural heritage and must submit to the materialism foisted upon them by a dictatorial atheistic government.

WHEN IT'S EYEGLASSES YOU NEED

J. E. COLLINS

HAS WHAT YOU WANT

QUICK SERVICE

NO NEED TO TRAVEL TO N.Y.

Latest Fashion Frames

J.E. COLLINS Opticians

CALL 778-4662

22 BROADWAY/PASSAIC, N.J.

Hearing Aid Sales and Service

Many Prescriptions Filled in One Hour

REVERSE SCHOOL FAILURE

Motivational Tutoring at Home
Electronic Teaching Equipment
Bring your Child to Grade Level or Beyond

READING MATH SPELLING

Diagnostic Testing (no fee and by appointment)
reveals actual achievement levels,
learning abilities and study habit blocks.

Accelerated Learning
GUARANTEED IMPROVEMENT

ebtronix LEARNING CENTERS

500 Franklin Ave.
Nutley, N.J.
667-7074

Local Jergens Plant Gets New Manager

(Continued from Page 1)

the company's headquarters in Cincinnati, Ohio.

A graduate of Xavier University, Cincinnati, in 1951, Crowe served with the U.S. Coast Guard in World War II.

The Andrew Jergens

School Five Gets Intercom System

(Continued from Page 1)

Gallombardo now has a direct line to all classrooms. The school has an enrollment of over 550 pupils and a faculty of about 25 teachers.

Only the senior and junior high school utilize intercom systems, along with School No. 10, which had a system when the school was constructed.

Most of the funds for the intercom were raised through special projects by the PTA and school such as card parties and candy sales. Mrs. Pat Barbone, president of the local PTA, headed the project for the parents and Gallombardo took care of the school end of the bargain.

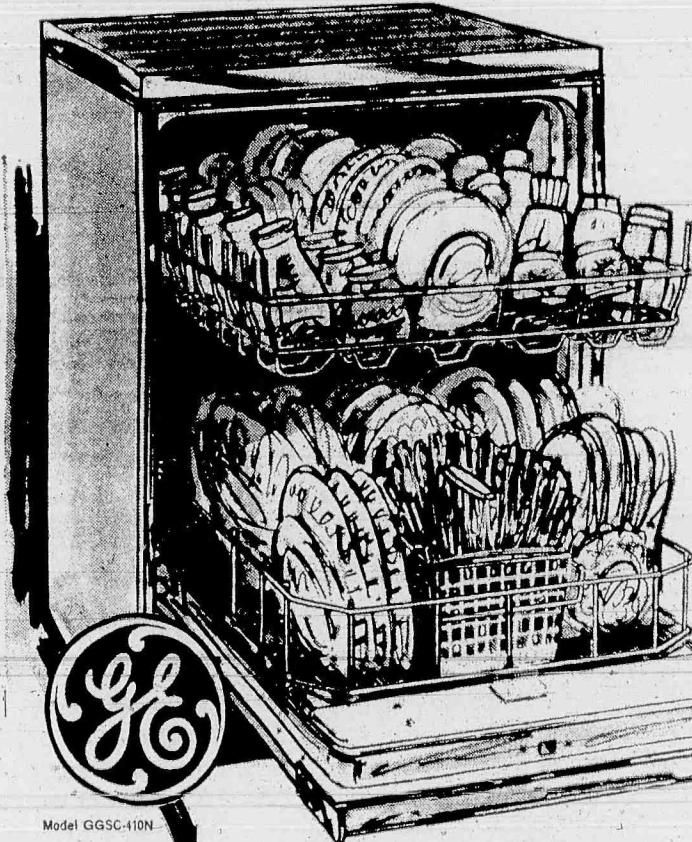
"I believe every elementary

school should have this type of system. Already, it has proved to be invaluable to us here," said the School Five principal.

According to Anthony Greco, superintendent of schools, the Board of Education will help with financial aid any school that has such a project planned.

According to Gallombardo, the intercom system has many advantages and is well worth the \$3,000 or so that is needed for purchase. Gallombardo reports that the system saves on messengers and teacher-principal conferences, but mostly safeguards against the emergency situation. The system also comes in handy for general announcements.

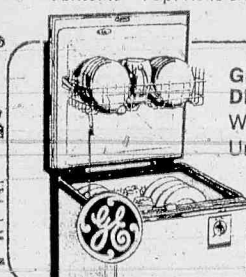
General Electric's Holiday Shoppers' Guide



General Electric Convertible Front-Load Dishwasher

Now at this LOW INTRODUCTORY PRICE! **\$199⁹⁵***

Use it as a portable NOW—convert it to a built-in LATER! 2-Wash Cycles—Normal for vigorous washing of everyday loads... Rinse & Hold for once-a-day dishwashing that rinses away food and holds dishes for a full load. Faucet Flo Unicouple... hooks right up to your faucet... no special plumbing required. Soft Food Disposer lets you load dirty dishes without pre-rinsing. Just tip off large or hard scraps. New Thoro-Wash, 3-Level washing action. Attractive Woodgrain Textolite* Top. Rolls smoothly on wheels.



GE TOP-LOADING PORTABLE DISHWASHER with powerful 2-level Thoro-Wash; Lift-Rack; Snap-on Faucet-Flo Unicouple Connector!

ONLY **\$149⁹⁵***

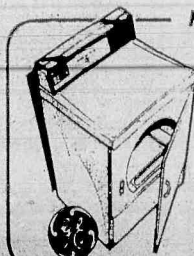
Model GQ3M 159N



\$40 off! General Electric 18-lb. Top-of-the-line Programmed Washer

Was \$269.95 **NOW \$229⁹⁵***

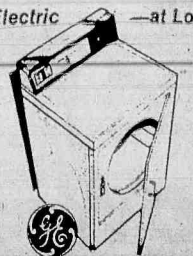
General Electric Heavy-Duty 18-lb. Mini-Basket Washer with 5 Programmed Selections. Push a button and you get just-right wash action, spin-speed, and wash and rinse temperatures AUTOMATICALLY, for every fabric load including Permanent Press! 3 wash cycles! Mini-Basket does most hand-wash; small, nuisance loads!



Matching Dryers—Gas or Electric

GE AUTOMATIC ELECTRIC DRYER
5 Cycle selections:
Heavy, Normal, Permanent Press, Extra Care, or Manual Timed.
3 Temperatures.
End-of-Cycle Signal.

Model DOE 7200N **\$168.88***
Gas Model DDG 7200N **\$198.88***



EXTRA LARGE CAPACITY GE ELECTRIC DRYER
5 Automatic Cycle selections including Permanent Press, Extra Care, hand-timed cycle, 3 temperatures, automatic ready-signal.

Model DOE 8200N **\$178.88***
Gas Model DDG 8200N **\$208.88***

FACTORY SERVICE available. Radio-Dispatched Trucks, Factory-Trained Experts, Genuine GE Parts for on-the-spot-service.

YOUR AUTHORIZED GE DEALER

WANNER'S

REFRIGERATORS - TELEVISIONS - WASHERS - DRYERS

188 CHESTNUT ST., NUTLEY
OPEN MON., WED., & FRI. 'Til 9 P.M.

Other Evenings By Appointment

667-0685



Seibel's Holiday Spirit

SEIBEL'S

THE HOLIDAY FASHION SPIRIT!

Sportswear from Seibel's complete holiday selection....come in and see for yourself today!

One of New Jersey's Oldest and Largest Women's Fashion Stores.

NUTLEY: 227 Franklin Avenue (661-1900) Free Alterations
Open Even. 'til Christmas. Use our 90 Day No Service Charge Credit Plan



A CONCLAVE of state and Essex County Mental Health officials was held recently in the Freeholder Board Room in Newark. Seen at conference was (l-r) Dr. Wynona M. Lipman, freeholder director and senator-elect; Eugene E. Callaghan, mental health chief and Dr. Sylvia Herz, chairman of the Mental Health Board.

Half-Million Dollar Grant For Lafayette College

The Marquis Foundation, which last year made the first large pledge toward the construction of Lafayette College's new physical education and athletics facility, has presented the college with more than half a million dollars in honor of Allan P. Kirby. He is the motivating force and president of the Marquis Foundation, a non-profit corporation established to acquire and develop properties for the benefit of Lafayette College.

to all WRITERS in this area...

A well-known New York publisher is searching for manuscripts worthy of book publication. Fiction, non-fiction, poetry, juveniles, collections of short stories or articles, religious, specialized and even controversial subjects will be considered.

If you have a manuscript ready (or almost ready) for publication, and would like to get in touch with this publisher,

write to the Editorial Director
Dept. S-115 P.O. Box 2119, G.P.O., New York, N.Y. 10001

At Recent Meeting

Area Mental Health Officials Plan For Better Services

A conclave of State and Essex County Mental Health officials planning for long-range goals, for better and more effective delivery of

mental health services throughout the county, took place at the Freeholder's Board Room at the Hall of Records on November 23.

It was initiated by Dr. Herz, chairman of the Essex County Mental Health Board, who is working "for a cohesive county togetherness

and unified approach in filling the gaps in service and developing innovative concepts to meet the ever-increasing frustrations and anxieties existent among families, teenagers and young children in this technological-electric age in which we live."

Freeholder-Director, Wy-

nona M. Lipman (Senator-Elect), welcomed the group and indicated the full support of the Board of Freeholders in the group's efforts, county and state-wide.

Callaghan, Bureau Chief, briefed the crowded Board room audience on state and

county goals, funding procedures, deadline dates, etc.

Also attending from the State was Andrew Kraemer, regional assistant of the Bureau of Special Community Mental Health Services who spoke on existing and future Community Mental Health Centers.

FLAT ROOFING SPECIALISTS
HARRISON & SON
ROOFING CO.
WY 1-3319 WY 1-5497

THE THIRD RAIL
UNI-SEX CLOTHING & JEWELRY
98 FRANKLIN ST. BELLEVILLE, N.J. 07109
751-6370
HOURS:
Mon. & Fri. 11 A.M. - 9 P.M. Tues., Wed., Thurs. 11 A.M. - 7 P.M. Sat. 10 A.M. - 6 P.M.

Pathmark

the name for value.

Now Open!

Pathmark of
Belleville-Bloomfield
(Silver Lake Area)

115 Belmont Avenue, Belleville, N.J.
Open 9am till Midnight
Monday, Tuesday, Wednesday, Saturday
9 a.m. till 1 a.m. Thursday and Friday
Closed Sunday



Frozen Food Values at Pathmarking Prices

- John's Cheese Pizza 15-oz. 59¢
- Banquet Pot Pies All Varieties 8-oz. 16¢
- Coffee Lightener 16-oz. 31¢
- Rich's Eclairs 8-oz. 37¢
- Banquet Buffet Suppers, Turkey, Beef, Pork, Chicken & Dumplings 2-lb. 99¢
- Cooked Shrimp 8-oz. 69¢
- Pathmark Bacon Regular or Thick 1-lb. 59¢
- Pathmark Canned Ham 6-oz. 69¢
- Pathmark Pork Roll 1 1/2-lb. 19¢
- Pathmark Canned Ham 3-lb. 28¢
- Cocktail Franks 12-oz. 89¢
- Pathmark Cold Cuts All Varieties 8-oz. 45¢

COUPON SAVINGS
This Coupon Worth 20¢ towards the purchase of any Fresh Meat in the Meat Dept.
Limit one per family. Good at any Pathmark store. Sun. Dec. 5th thru Sat. Dec. 11, 1971. Void where prohibited.

Manufacturers Coupon Savings
This Coupon Worth 10¢ towards the purchase of 3 lb. 1 oz. box Ajax Laundry Detergent
Limit one per family. Good at any Pathmark store. Sun. Dec. 5th thru Sat. Dec. 11, 1971. Void where prohibited.

Manufacturers Coupon Savings
This Coupon Worth 33¢ towards the purchase of 150 Glad Sandwich Bags
Limit one per family. Good at any Pathmark store. Sun. Dec. 5th thru Sat. Dec. 11, 1971. Void where prohibited.

Manufacturers Coupon Savings
This Coupon Worth 25¢ towards the purchase of 4 oz. jar DeCaf Instant Coffee
Limit one per family. Good at any Pathmark store. Sun. Dec. 5th thru Sat. Dec. 11, 1971. Void where prohibited.

Holiday Values

Gift Wrap Jumbo Roll 90 sq. ft. paper 30 sq. ft. embossed foil ea. 88¢	Tinsel Garland Drapes Beautifully 3" X 50 ft. 49¢	Gift Bows Stripes & Solids pkg. of 25 49¢	Icicles PVC 1000 ct. 37¢
Lite Set Miniature UL Approved In Clear, Solid or Multi Color 35 litres \$1.99	Lite Set Indoor UL Approved C-7 Bulb 15 litres \$2.29	Lite Set Outdoor UL Approved C-8 1/2 Bulb 15 litres \$2.49	Snow Bomb Aerosol 12-oz. can 49¢
Easy Curl Set LITTLE GIRLS LEARN HOW TO SET THEIR HAIR JUST LIKE MOM \$5.99	Dolls Ginger & Her Baby Carriage - Cuddly Plush Sweet Linda - Tiny Angel Baby & Crib Your Choice \$2.99	Wheelie Trikes Remco #7165 Remote Control \$4.77	Shaker Maker People #801 or Animals #802 \$3.57

- Health & Beauty Aid Values at Pathmarking Prices! General Merchandise Values at Pathmarking Prices!
- Right Guard Deodorant 1 1/2-oz. 88¢
 - Johnson's Baby Shampoo 12-oz. \$1.09
 - Baby Powder 14-oz. 89¢
 - Soff Cosmetic Puffs Johnson & Johnson 33¢
 - Micrin Mouthwash 32-oz. 99¢
 - Just Wonderful Hair Spray Regular, Hard 13-oz. 39¢
 - Medicated Skin Cream 16-oz. 59¢
 - Panty Hose 12-oz. 49¢
 - Panty Hose 12-oz. 79¢
 - Kodak Instamatic Color Film 128 135 99¢
 - Flash Cubes Famous Brand 12 Flashes 89¢
 - Polaroid Color Film 128 135 53¢
 - Polaroid Color Film 128 135 29¢
 - Prestone De-Icer 14-oz. 79¢

- Grocery Values at Pathmarking Prices
- Clorox Bleach 1-gal. 49¢
 - Pathmark Vegetable Soup 10 1/2-oz. 11¢
 - Ragu Spaghetti Sauce All Varieties 15 1/2-oz. 33¢
 - Pathmark Liquid Dish Detergent 1/2-gal. 59¢
 - Welch's Grape Jelly 1-lb. 39¢
 - Pathmark Flour 5-lb. 39¢
 - Scot Towels All Colors 168 sheets 32¢
 - Pineapple Juice 1-qt. 14-oz. 29¢
 - Pathmark Shortening 3-lb. 79¢
 - Purex Bleach 1-gal. 43¢
 - Pathmark Bleach 1-gal. 39¢
 - Libby's Tomato Juice 1-qt. 14-oz. 33¢
 - Pathmark Tomato Juice 1-qt. 14-oz. 29¢
 - Blu-Boy Cleaner 8-oz. 77¢
- Fresh Farm Produce at Pathmarking Prices
- Bananas 12¢
 - Potatoes 55¢

- Say Hello, Say Something!
- Chickens Whole Frying Fresh Killed, U.S. Govt. Inspected, Grade A None Priced Higher 29¢
 - Sirloin Steaks Trimmed Well None Priced Higher 99¢
 - Rib Roast Semi-Boneless 7" Cut Oven-Ready, First Cut Higher 95¢
 - Brisket Beef Fresh Boneless 99¢
 - Ground Chuck Lean, 3-lb. Pkg. of Over Smaller Quantities Priced Higher 79¢
 - Rib Steaks - 7" Cut None Priced Higher 99¢
 - Chuck Beef Patties Fresh or Frozen 95¢
 - Boneless Pork Butt Roast Fresh 69¢
 - Roasting Chickens U.S. Govt. Inspected, Grade A 3 1/2-lb. 39¢
 - Chicken Legs Quartered With Back Attached, Grade A 43¢
 - Chicken Breasts Quartered With Skin and Low End Chop Per Pkg. 43¢
 - Pork Loin Chops Quartered 8-11 Center and Low End Chop Per Pkg. 85¢
 - Cube Beef Steaks From Beef Chuck 1-lb. 49¢
 - Sausage Meat 1-lb. 49¢
 - Select Beef Liver 1-lb. 49¢
 - Sausage Meat Jones Ready To Brown 10-oz. 69¢
 - Pathmark Yogurt All Flavors 8-oz. 15¢
 - American Singles Pathmark, Past. Pres. 12-oz. 59¢
 - Cottage Cheese Pathmark 2-lb. 69¢
 - Pathmark Orange Juice 1/2-gal. 59¢
 - Cooked Turkey Roll White Meat 1-lb. 1.99
 - Hormel Chopped Ham 89¢
 - Borden's Swiss Cheese 1.19
 - Danish Luncheon Meat 69¢
 - Tasty Shrimp 3-lb. Count per lb. 99¢
 - King Crab Legs Walpole Small Frozen 1.69
 - Alaskan Salmon 12-4 lbs. Avg. 89¢
 - White Bread The Big Loaf 1-lb. 25¢
 - Water Bagels Gourmet 29¢
 - Pound Cake Ring 59¢

FREE! 2 Bayberry Candles to brighten your holiday season

Let the candles glow while your savings grow! These 2 beautiful bayberry candles can add fragrance and cheer to your holidays. DeWitt is offering them as a gift to anyone opening a new \$25.00 savings account.

And, remember, a DeWitt account returns the highest dividends in Belleville. Come in anytime between December 1 and December 25 for your yule candles.



DeWITT SAVINGS AND LOAN ASSOCIATION

463 Washington Avenue, Belleville, New Jersey
Telephone: 751-2800

Open Daily, 9 A.M. to 4 P.M. Also Monday Eves., 6:30 to 8 P.M.

MEMBER: Federal Savings and Loan Insurance Corporation and Federal Home Loan Bank System

Prices effective Sunday, December 5, thru Saturday night December 11, 1971. Not responsible for typographical errors. We reserve the right to limit quantities.

WEDDINGS AND ENGAGEMENTS IN SOCIAL SPOTLIGHT

Pipitones Celebrate Mr. and Mrs. Robert Bonfante 25th Anniversary Spend Bermuda Honeymoon

Mr. and Mrs. Edward Pipitone of 25 Naples Avenue celebrated their 25th wedding anniversary on November 25, Thanksgiving Day.

A celebration for the immediate family was held at the Fountain, Belleville.

Mr. Pipitone is a self-employed barber located at 525 Joralemon Street. The couple are long time residents of Belleville.


Post 275 Auxiliary Is Fifty Years Old

The Ladies Auxiliary to Post No. 275 Veterans of Foreign Wars of the U.S., Younger-Alden Jr., Auxiliary will celebrate its 50th Anniversary on Sunday afternoon December at 2:00 p.m. at the V.F.W. Home, 17 Belleville Avenue with a dinner and Christmas Party. Anna Fernicola is chairlady and should be called at 751-1124 for reservations.

The next regular meeting of the Auxiliary will be held on Thursday evening December 16, at 8:00 p.m., at the Post Home.

The following members, President Georgiana Jinks, Ruth Stalter, Maude Friscia, Ethel Gaudet and Theresa Singer, attended the Official Visit of the Department President of N.J. Ladies Auxiliary, V.F.W., Frances T. Nebus, of Keyport, held at Cedar Grove Post No. 6255, V.F.W. The District No. 4, President, Mrs. Alice Myron of Roseland presided.

shy FEMININE SYRINGE



Petite, easy, modern.
No hose.
No hanging.
Holds two quarts.

Reg. \$4.95

NOW ONLY \$3.99

 <p>7 oz. Only 99¢</p>	 <p>3 oz. Reg. \$1.09 NOW 89¢</p>
 <p>15 oz. Only 1.49</p>	 <p>6 oz. Reg. \$1.79 NOW 1.39</p>

At all Associated Neighborhood Pharmacies

For nearest call: 777-0576



Carolyn Fashions, Inc.

Announcing

NEW DEPARTMENT MEN'S OUTERWEAR

- Raincoats
- Corduroy Jackets
- Car Coats
- And Many Other Items

WOMEN'S COAT SALE

- Fake Furs
- Wool
- Children's
- And Many Others

At Tremendous Savings

444 Washington Ave., Belleville, N.J.
Rear Building 759-9896

Hours: Mon. - Fri. 10-5, Sat. 10-9

Miss Teresa Thoma, daughter of Mr. and Mrs. William Thoma, Sr. of 168 Stephens Street and Robert Bonfante, son of Mr. and Mrs. Nicholas Bonfante Sr. of 13 Cuozzo Street, were married September 12 in St. Peter's Church, Belleville.

The ceremony was performed by the Rev. William Mink and a reception followed at Wayne Manor, Wayne.

Escorted by her father, the bride wore an A-line gown of organza with re-embroidered Alencon lace and pearls. Her lace and pearl cap held a detachable cathedral veil and a three tier elbow length veil and she carried a bouquet of phalaenopsis orchids, with baby roses and stephanotis.



Mr. and Mrs. Robert Bonfante-nee Teresa Thoma

Miss Graziano, Arthur Tuow Are Engaged

Miss Villani, Dennis Barron Will Be Wed

Mr. and Mrs. Anthony Graziano of 269 Hornblower Avenue Belleville, announce the engagement of their daughter, Joanne to Arthur S. Touw, son of Mr. and Mrs. Arthur W. Touw of 54 Beech Street, Belleville.

Miss Graziano, a graduate of Belleville High School and Essex County Girls Vocational and Technical School, Newark, is with Rotosin Keypunch Services, Belleville. She is also a licensed beautician.

Mr. Touw, also a Belleville High School Alumnus, is a Second Class Petty Officer in the U.S. Navy.

Mr. and Mrs. Angelo Villani of 220 Bloomfield Avenue, Nutley, announce the engagement of their daughter, Doreen to Dennis J. Barron of 67 Bremond Street, Belleville, son of Mr. and Mrs. Frank Barron of Wilkes-Barre, Pennsylvania.

The troth was made known December 5 at a dinner for the immediate family at San Carlo Restaurant, Lyndhurst.

Miss Villani, a graduate of Nutley High School, is a senior at St. Peter's College, Jersey City, where she is majoring in accounting.



Miss Joanne Graziano

Mr. Barron, an alumnus of Ft. Lauderdale University, Florida, is manager with Rite-Aid Corporation, Paterson.

The wedding will be held in July 1972.



Miss Doreen Villani

Too much flattery is like too much sugar. Both are artificial.

FLAT ROOFING SPECIALISTS

HARRISON & SON ROOFING CO.

WY 1-3319 WY 1-5497

ANCO IS THE ANSWER FOR RCA

Miss Joanne Pinto of East Orange was maid of honor. Bridesmaids included Mrs. Robert May Jr., Mrs. Nicholas Bonfante Jr., Miss Margaret Thoma and Miss Gloria Piegario, all of Belleville.

The honor attendant's gown was of apple green chiffon smocked at the waistline with lime green. The others' gowns had the colors reversed. All wore matching Camelot headpieces and carried green daisy mums and multi color carnations.

Nicholas Bonfante Jr. was best man for his brother. Ushers were William Thoma Jr. of Bayville, Michael Grasso of East Orange, Daniel Seffanelli of Belleville and Gerard Bonfante of Bloomfield.

Mrs. Thoma chose a royal blue gown of polyester suede with rhinestone trim and silver accessories. Her corsage was of white cymbidium orchids. The groom's mother was in a pink silk worsted gown with rhinestones and sequins. She also wore silver accessories and her corsage was of white phalaenopsis orchids.

Mrs. Bonfante, an alumna of Belleville High School, is with Western Electric, Kearny.

Mr. Bonfante, also a graduate of Belleville High School, is an economics major at Rutgers University. He is with the Star Ledger.

The couple have made their home in field after honeymooning in Bermuda.

Life would be a lot simpler without so many organizers.



Mrs. Robin Wolfe

Mountainside Has Appointed Mrs. Wolfe

Mrs. Robin Wolfe has been appointed Director of the Medical Record Department at The Mountainside Hospital. The announcement was made by Executive Vice President John C. Imhoff.

Prior to coming to Mountainside, Mrs. Wolfe was assistant to the Director of Medical Records at St. Vincent Hospital in Worcester, Massachusetts. Mrs. Wolfe holds a B.A. in Education from the University of Massachusetts and a B.S. in Medical Record Administration from the University of Illinois. In December, 1970, she passed the American Medical Record Association Registration Examination, qualifying her as a registered record librarian.

Book Fair Set At School Two

The annual Book Fair at Montgomery School Two Belleville, will be held on December 14, 15, and 16. Many fine books covering a wide variety of subjects for both pleasure and education will be available for sale.

The Book Fair will be held in School 2's multipurpose room between 9:00 a.m. and 3:30 p.m. Parents are most welcome.

Life would be a lot simpler without so many organizers.

Community Choir Will Sing 'Messiah'

Handel's 'Messiah', Part I, will be presented at St. Paul's United Church of Christ, 10 St. Paul's Place, Nutley Sunday, December 12 at 4 p.m. The Community Choir organized in 1969, will be conducted by Valeria Wallace Peed, organist-director of St. Paul's Church.

Guest organist for the performance will be John R. Roland, Minister of Music of the West Side Presbyterian Church, Ridgewood.

Guest soloists are Marianna Ciraulo, soprano of Manhattan, Nancy Dodson, contralto of Princeton, Charles House, tenor of Long Island and Edgar Hodsdon, baritone of Wycoff.

The chorus will also be accompanied by a string ensemble.

Miss Ciraulo made her debut with the New York State Theatre last year and is currently one of the leading soloists of the Opera Repertory Company of Lincoln Center.

Nancy Dodson is soloist of The First Presbyterian Church, Princeton and has been a guest on many programs with the Westminster College Touring Choir.

Charles House has appeared as soloist with leading symphony orchestras in oratorio and opera. He has toured in community and university series in Germany, Canada and the United States. Mr. House has also appeared as soloist of the New York Opera Company City Centre and Town Hall.



Miss Marianne Ciraulo

and is active in summer theatre.

Edgar Hodsdon is a regular soloist with The West Side Presbyterian Church, Ridgewood. He is also a member of the Pro Art Choral Group and Chamber Singers of the Pro Art Choral who perform frequently at Lincoln Centre.

PDL CUSTOM TAILORS

OUR FALL '71 LINE IS IN.

Mohairs for Suits or Evening Wear in 25 Shades. 137 Worsteds in Stripes, Plaids and Solids. Twills in 15 shades. Double Knits in 21 Shades. Sport Coats in 45 Shades. 76 Overcoatings Scottish & English Tweeds, Meltons, Camel Hairs & Cashmere Styles. YOU NAME IT!

94 Centre St., Nutley 667-1756

DELANEYS

Juvenile-Teen-Adult Furniture and Bedding

We Stock A Good Selection of Creative Playthings

SLIDE HOUSE



Also:



Fisher Price, Playskool, Child Guidance, Romper Room & many more

-1+ CLUTCH BALL Plastic 5 1/2 diameter \$2.95

104 Ridge Road No. Arlington 991-4039

OPEN 'TIL 9

CCP CREDIT PLAN

SOCIAL AND CLUB NEWS OF COMMUNITY INTEREST



VACATION CRUISE—Mr. and Mrs. Harvey Kramer of 69 Belmoor Street are photographed poolside aboard the Greek Lines' luxury liner, T.S. Olympia just before sailing from New York Harbor on a week's vacation cruise to the sunny Bahamas visiting Freeport on Grand Bahama Island and Nassau.



ON THE FASHION SCENE—Selecting the proper dress is a hard decision according to Mrs. Ralph Gennell and Mrs. Alfred Brizzolara, both of Belleville as they look at the list of fashions displayed at the event.

Hospital Guild Sponsors Fashion Show, Buffet

The Clara Maass Memorial Hospital Guild sponsored a fund raising buffet and cocktail party with a fall fashion show at the Wayne Manor recently. For the past 15 years the guild has entertained functions to provide necessary articles for the Belleville hospital. The proceeds of this year's event will be used on whatever articles are deemed necessary in the new Continuing Care Center adjacent to the main hospital. As another means of boosting funds, the hard working committee awarded 60 donated gifts ranging from fruit baskets to silverware to the prize-winning guests.

Over 250 members and friends were delighted by the array of fashions from fall attire into the holidays offering a mix of casual wear and

elegant evening attire. The models of J.M. Towne won the applause for both themselves and the fashions displayed.

Mrs. Frank Giancaspro of Verona, the Guild's 1st. Vice-President served as chairlady and was assisted by Mrs. Bernard Schmidt of North Caldwell, co-chairman. Mrs. Peter Amirata of Roseland, Guild president, Mrs. Raphael Remondelli of Short Hills and Mrs. Anthony Nittoli of West Orange; tickets and reservations. Mrs. Alfred Brizzolara and Mrs. Ralph Gennell both of Belleville, prizes. Mrs. Saul Bloom of West Orange, finance; Mrs. Lawrence DiOrto of Glen Ridge, fashions; Mrs. Philip Rispoli of Bloomfield, publicity.

Essex Catholic Parents' Club Holding Party

The Essex Catholic High School Mother's Club and Father's Club will sponsor their Annual Christmas Party on Friday, December 10th at 8:00 p.m. in the school ballroom. Mrs. Toni Cerrito of East Orange and Mr. N. Potts of Newark are chairmen.

Highlight of the evening will be a concert by the Essex Catholic Boy's Glee Club under the direction of Brother Daniel O'Brien.

There will be dancing and refreshments and all the parents are invited to attend.

School One PTA Meets Dec. 21

There will be a P.T.A. meeting at School Number One on December 21 at 8:00 p.m. Entertainment will be presented by the Glee Club of School Ones 5th and 6th graders.

A Christmas Bazaar will follow and refreshments will be served.

A balanced life includes work, recreation, meditation and study.

Stork Club

Deanna V. Del Plato

A second child, a daughter, Deanna V. was born to Mr. and Mrs. Harry J. Del Plato of Bloomfield, October 22 at Clara Maass Memorial Hospital. Birth weight was 8 pounds, 1 ounce. She joins H. Christopher 3. Mrs. Del Plato is the former Dolores Villani daughter of the late Mr. and Mrs. James Villani of Newark. Mr. Del Plato, son of Dr. and Mrs. Harry A. Del Plato of Union is a judge in Newark Municipal Court and has law offices at 12 Rossmore Place, Belleville.

Joseph A. Messina

A second child, a son, Joseph Anthony was born to Mr. and Mrs. Nicholas T. Messina of 49 Franklin Street, October 28 at Clara Maass Memorial Hospital. Birth weight was 7 pounds 5 ounces. He joins Nicholas T. III 17 months. Mrs. Messina is the former Josette Foselli daughter of Mr. and Mrs. Joseph Foselli of Parlin. Mr. Messina son of Mr. and Mrs. Nicholas Messina of Bloomfield is a set-up man with General Plastic, Bloomfield.

Michele M. Raimo

A third child, a daughter, Michele Marie was born to Mr. and Mrs. John Raimo of Newark Avenue, October 30 at Clara Maass Memorial Hospital. Birth weight was 10 pounds, 8 ounces. She joins Vicki Ann 4, John Joseph 2. Mrs. Raimo is the former Joy Sylvestro daughter of Mr. and Mrs. Joseph Sylvestro of Belleville. Mr. Raimo son of Mrs. Victoria Raimo of Belleville is a frameman with New Jersey Bell Telephone, Kearny.



SETTING SAIL—Miss Kathleen Shashak of 55 Bremond Street is pictured on the deck of the Greek Lines' luxury liner, T.S. Olympia just before sailing from New York Harbor bound for a fall holiday vacation cruise to the sun filled isles of Bermuda and Nassau. Kathleen is a secretary with N.J. Fire Insurance Rating Organization.

Teachers Present Program Tuesday At School Nine

On December 14, the Teachers of School Number

Nine will present their annual Christmas program at 7 p.m. in the school auditorium. Parents and relatives are invited.

GRAND OPENING SPECIAL
20% Off on any Job
A ACTION CARPET CLEANERS
of New Jersey
Nutley-Free Estimates-667-5634
Steam Cleaning-Dirt Extracted
Quick Drying
Home and Commercial Cleaning

Mr. Carmel Guild Plans Xmas Party

The Annual Christmas Party given by the Mount Carmel Guild Department for the Visually Handicapped will be held on Sunday, December 19, at the Multi-Service Center, 17 Mulberry St. Newark, at 3 p.m. The affair will feature Christmas carols and a visit from Santa Claus with gifts and candy for all.

The affair this year is being sponsored by the Newark Jaycees.

More than 300 members from Bergen, Essex, Hudson and Union Counties, along with friends, relatives and Guild volunteers are expected to be in attendance. The Christmas Social is another of the many services provided by the Guild for the Visually Handicapped.

"BEAUTY TIPS"

By Justin

If you have dark circles under your eyes, an under-eye emollient used beneath your camouflage foundation will keep the makeup from sinking into tiny lines.

Be careful when dieting—complete absence of oils and fats in diet can cause dry hair.

Before removing dress, blouse or sweater over your head, put old shower cap over face (underneath chin and above forehead). No make up on your clothes!

To dry insides of boots, insert hose of portable hair dryer and blow.

Save Save "You Economize At Justin's"

Imported "Hand-Dryer"	For \$ 8.95
Selecta "Hand-Dryer"	For 10.95
Selecta "Hot-Comb"	For 20.95
Continental "Hot-Comb"	For 11.95
Selecta "Hot-Comb"	For 16.95
Solis "Hot-Comb"	For 20.95
Electric Curler Set	For 29.95
Facial Sauna	6.95
Roller and Clip Sets	9.95
Electric Massage Brush	2.50

JUSTIN'S BEAUTY SUPPLY CO.
"FOR ALL YOUR BEAUTY NEEDS"
16 BELLEVILLE AVE.
BLOOMFIELD, N.J.
OPEN THURS. TIL 8:30 P.M.
748-4823

All JNC Gifts are boxed in JNC's exclusive boxes and Free Gift Wrapped to suit the occasion.
Your choice of 45 gift wraps to choose from.
Chanukah gift wrap included-of course.

Miss Elaine does wonders for a luxurious, lovable bewitching Christmas. . .

True Love's own Trousseau Treasure.

So perfect for holiday gifting. Ravishing Caprolan nylon satin-tricot lavished with lace. Rib-caged quilted robe with demure tie-belt. Bridal white. Something blue. Sm., Med., Lg. by Miss Elaine. (\$24)

And isn't this a lovely way to match!

Miss Elaine's own nylon tricot tunic top pajama ensemble. Easy care washable Caprolan nylon satin with a profusion of lace. Sm. Med., Lg. (\$12)



Janette Nutley Center, Sleepwear, Robes & Lingerie, Main Floor

Janette Nutley Center

Shop Every Nite til 9

DIAMONDS...

EVERY Style...

EVERY Shape...



AND AT SUBSTANTIAL SAVINGS

Because Corbo imports diamonds direct, you can purchase a 50-pt. diamond from \$250, a 75-pt. diamond from \$400 or a one carat diamond from \$600.

Our consultants will assist you to choose the right setting. We have a complete selection from fancy shapes to conservative and priced accordingly.

at the matchmaker.....

Corbo Jewelers
since 1876 gemologists, g. i. o.

STYRETOWN SHOPPING CENTER
1055 BLOOMFIELD AVE., CLIFTON
OPEN: Eve. till 9, Sat. till 6
Stores in Bloomfield, Preakness, Willowbrook
American Express/Master Charge/Corbo Charge

You're Cordially Invited To Attend Our

Of Winter Apparel!!

Sale
COATS
Sizes 6 To 16 -were \$170 To \$445
NOW \$110 To \$325

DRESSES
Large Selection of Sport Dresses
Sizes 10 To 18 were \$70 To \$115
NOW \$35 To \$75

COCKTAIL & EVENING DRESSES
Sizes 6 To 16 -were \$80 To \$300
NOW 20% To 50 % OFF

DRESSMAKER SCOTCH CASHMERE SWEATERS
Green only -Small sizes
Were \$32
NOW \$12

Alex

620 VALLEY ROAD, UPPER MONTCLAIR
"ENTRANCE ON THE PLAZA" - TELEPHONE 746-4800



Fresh Fruits & Vegetables

FRESH MUSHROOMS
69¢ lb.

DELICIOUS RED FANCY Apples 3-lb. bag 39¢
FANCY Anjou Pears 1-lb. 19¢
TENDER CHICORY OR Escarole 1-lb. 19¢
FRESH RADISHES OR Scallions 2 for 19¢
FLORIDA JUICY "SIZE 100" Tangelos 10 for 49¢
U.S. #1 IDAHO BAKING Potatoes 5-lb. bag 59¢
TOP QUALITY Southern Yams 1-lb. 19¢

General Merchandise

SHOP-RITE "AMPLON" FIRST QUALITY
PANTY HOSE
30¢ OFF LABEL
STRETCH NYLON **49¢**

GIFT WRAP 6 ROLL PAPER-80 SQ.-FT. 26"x74" OR 6 ROLL FOIL 30 SQ. FT. 26"x28" YOUR CHOICE 89¢
JUMBO ROLL PAPER 80 SQ. FT. OR FOIL 26 SQ. FT. YOUR CHOICE 79¢
HEAVY SHAM BOTTOM Glassware 10-OZ. ROCK/10-OZ. HI BALL pack of four 69¢
WHY PAY MORE? Assorted Toys YOUR CHOICE 88¢
SHOP-RITE BRIDGE OR PINOCLE Playing Cards 4 packs for \$1.00
FOLDING COLORFUL PATTERNS Tray Tables each 99¢

"CAPTURE THOSE PRECIOUS HOLIDAY MOMENTS"

KODACOLOR FILM

CX 126-20 EXPOSURES FOR INSTAMATIC CAMERAS PRICE INCLUDES PROCESSING JUMBO PRINTS & FREE MAILER ALL FOR **\$3.79**

COLOR FILM #108 Polaroid \$3.69
PACK OF 3 (12 FLASHES) G.E. Flash Cubes 79¢
(ABOVE AVAILABLE ONLY IN STORES NORMALLY CARRYING FILM)
SHOP-RITE INVISIBLE Mending Tape 1/2" x 600' 39¢
SHOP-RITE "D" Batteries pkg. of 2 29¢

In Our Dairy Case

REGULAR SHOP-RITE
MARGARINE

5 1-lb. pkgs. 99¢

ORANGE JUICE Tropicana 1/2-gal. ctn. 69¢
SHOP-RITE CHEESE Swiss American 1-lb. pkg. 69¢
ALL VARIETIES SHOP-RITE Cookies 3 1-lb. pkgs. \$1
SALT OR SWEET SHOP-RITE Whipped Butter 8-oz. pkg. 49¢
SHOP-RITE Cottage Cheese 2-lb. cont. 69¢
SHOP-RITE Sour Cream pint cont. 39¢
ALL VARIETIES PILLSBURY Cookies 2 15-oz. pkgs. 97¢

VALUABLE COUPON

MFG Towards the purchase of a 1-lb. pkg. of 0AB8
8¢ OFF Chiffon Regular Margarine
WITH THIS COUPON Limit: One coupon per family. Coupon expires December 11, 1971. MFG Coupon good at any Shop-Rite Supermarket.
SAVE 8¢

VALUABLE COUPON

MFG Towards the purchase of a 1-lb. can of 1AB0
10¢ OFF Chock Full O' Nuts Coffee
WITH THIS COUPON Limit: One coupon per family. Coupon expires December 11, 1971. MFG Coupon good at any Shop-Rite Supermarket.
SAVE 10¢

MORE MEATS AT LOWER PRICES!

CHUCK STEAK



FIRST CUT

CENTER CUT **49¢** lb.

39¢ lb.

CHUCK FLAVORFUL & TENDER

CALIFORNIA ROAST **75¢** lb.

FOR STEW BONELESS CHUCK **89¢** lb.

BONELESS CHUCK ROAST

USDA CHOICE **89¢** lb.

LEAN & JUICY SHOULDER STEAK **\$1.29** lb.

FOR POTTING OR BRAISING BEEF SHORT RIBS **79¢** lb.

CUT SHORT FOR BROILING

RIB STEAKS



89¢ lb.

LEAN, TASTY & FRESH

GROUND CHUCK

ANY-SIZE PACKAGE

79¢ lb.

CENTER CUT

PORK CHOPS

OR ROAST

99¢ lb.

LOIN PORK CHOPS End Cut lb. 69¢

COUNTRY STYLE RIBS lb. 55¢

RIB PORK CHOPS END CUT lb. 49¢

FRESH SPARE RIBS (REGULAR STYLE) lb. 69¢

FRESH CUT

CHICKEN PARTS lb. 39¢

WINGS

For Southern Fry lb. 59¢

BREASTS W/RIBS

lb. 69¢

Shop-Rite Boneless

SMOKED BUTTS lb. 79¢

Why Pay More For Groceries

WHY PAY MORE?

WESSON OIL

gallon can **\$2.29**

CLUB/UP RITE AND SHOP-RITE

GINGERALE

6 1-pt. 12-oz. btl. **\$1**

Health & Beauty Aids

HEAD & SHOULDERS 6.5-oz. LOTION

SHAMPOO

6.5-oz. LOTION or 4.3-oz. TUBE **99¢**

WHY PAY MORE? SHOP-RITE

Mayonnaise quart jar 49¢

WHY PAY MORE? COFFEE

Chock Full O' Nuts 2-lb. can \$1.69

SHOP-RITE Apple Sauce 3 3-oz. jars \$1

SACRAMENTO Tomato Juice 3 1-qt. 14-oz. cans \$1

SHOP-RITE FRUIT Cocktail 4 1-lb. cans 99¢

DANISH CINNAMON/BLUEBERRY/STRAWBERRY KELLOGG Danish Go Rounds 8-oz. box 25¢

Frozen Food Savings

CREAM PUFFS OR

RICH'S ECLAIRS

3 8 1/2-oz. pkg. **\$1**

CHICKEN, MEAT LOAF, TURKEY OR

SWANSON DINNER

11-oz. pkg. **49¢**

SAUSAGE OR CHEESE

John's Pizza 16-oz. pkg. 59¢

APPLE, DUTCH APPLE, MINE, OR PUMPKIN Mrs. Smith Pies 2 1-lb. 10-oz. pkgs. 99¢

PERX COFFEE Lightener 6 16-oz. conts. 89¢

SHOP-RITE Corn On The Cob 6 ear pkg. 59¢

Seafood

WHY PAY MORE?

WHOLE #1 SMELTS

2-lb. bag **59¢**

WHY PAY MORE?

Turbot Fillet lb. 49¢

41-50 TO A LB. Shrimp lb. \$1.39

61-70 TO A LB. Shrimp lb. 99¢

WHY PAY MORE?

Standard Oysters 8-oz. cup 89¢

FRESH DUG (LITTLENECK) Clams dozen 79¢

CHICKEN BEEF TURKEY BANQUET

Pot Pies 6 8-oz. pkgs. \$1

OVEN CRISP TASTI STRIPES OR Tasti Fries 2 20-oz. bags 79¢

SHRIMP OR CHICKEN HOWARD JOHNSON Croquettes 12-oz. pkg. 59¢

SHOP-RITE "GRADE A" French Fries 8 9-oz. pkg. \$1

Bakery Dept.

THE BIG LOAFER

WHITE BREAD

1-lb. 6-oz. loaf **23¢**

SHOP-RITE PKG. OF 6 25¢

English Muffins pkg. of 12 45¢

SHOP-RITE REGULAR/THIN SANDWICH White Bread 3 1-lb. 8-oz. loaves 95¢

SHOP-RITE BAKED LARGE 8" SIZE-ALL VARIETIES Fresh Pies 1-lb. 5-oz. box 59¢

SHOP-RITE JEWISH Rye Bread 1-lb. pkg. 29¢

SHOP-RITE Potato Chips 12-oz. 45¢

Appetizer Dept.

COOKED CORNED BEEF

1/2-lb. **99¢**

PLYMOUTH ROCK Spiced Ham lb. 69¢

HORMEL (ARTIFICIAL CASING) Hard Salami 1/2-lb. 79¢

STORE SLICED DOMESTIC Swiss Cheese lb. 99¢

FRESH Cole Slaw lb. 29¢

RICH'S WHITE MEAT Turkey Roll 1/4-lb. 49¢

ZEE BEST BAKED French Loaf lb. 99¢

IVORY FLAKES GIANT

2-lb. 89¢

THRILL

GIANT

1-pt. 6-oz. **57¢**

SALVO

JUMBO

1-lb. 10-oz. **\$1.99**

GIANT

IVORY LIQUID

1-pt. 6-oz. **55¢**

VALUABLE COUPON

MFG Towards the purchase of 10-oz. jar 3AB3
33¢ OFF Nescafe Instant Coffee
WITH THIS COUPON Limit: One coupon per family. Coupon expires December 11, 1971. MFG Coupon good at any Shop-Rite Supermarket.
SAVE 33¢

VALUABLE COUPON

MFG Towards the purchase of a 1-qt. btl. of 3AB0
30¢ OFF Ajax Liquid DISH DETERGENT (Regular Price 83¢ With Coupon 53¢)
WITH THIS COUPON Limit: One coupon per family. Coupon expires December 11, 1971. MFG Coupon good at any Shop-Rite Supermarket.
SAVE 30¢

VALUABLE COUPON

MFG Towards the purchase of a pkg. of 80 1AB2
12¢ OFF Glad Sandwich Bags
WITH THIS COUPON Limit: One coupon per family. Coupon expires December 11, 1971. MFG Coupon good at any Shop-Rite Supermarket.
SAVE 12¢

Prices effective thru Sat., Dec. 11th. We reserve the right to limit quantities. Not responsible for typographical errors.

Home Christmas Display Contest Set By Belleville Recreation Department

Commissioner Michael V. Marotti has announced the 1971 Home Christmas Display Contest which will be sponsored by the Recreation Department. Members of the Womans Club of Belleville will do the judging of the displays between Christmas and New Years. Five homes will be chosen and the winners will receive handsome prizes.

Belleville has always done a great job of adding to the Christmas spirit by bursting

out in beautiful array at Christmas time. It is in the interest of further encouraging this effort that the Recreation Department offers prizes for the most outstanding displays. Winners over the previous years have not been those with the most elaborate displays or those with the most bulbs but rather they have been chosen for their originality, artistic taste and relativity to the Christmas Spirit. Home-made displays have been preferred.

The ladies on the committee will endeavor to see all houses in Belleville, but, resi-

dents who wish to, may call the Recreation Office and register in the Contest, there-

by assuring that their displays will be included in the judging.



ESSEX COUNTY JUNIOR MISS winner and finalists shown above include (far right) Susan Marrazzo of Belleville. Ellen Namesnyik of Nutley (left) won the annual pageant held in Millburn. She is seen on stage with (l-r) last year's winner, Orysia Tylko of Irvington; Stacy Trimble of Montclair, first runner up.

Snowball Dance Set for January; Will Crown Queen

The Snowball Dance and Queen Contest, highlight each year of the Essex County CYO's teen social calendar, will be held Friday evening, January 14 at the VFW Memorial Post Hall on Pompton Avenue, Cedar Grove.

The buffet dance, which will feature a lively rock band, will be the 24th annual such affair sponsored by the county CYO. High point of the evening will be the crowning of the Snow Queen. Placing the tiara on the head of the queen will be last year's titleist, Miss Rosita Rooney of Our Lady of Lourdes, West Orange.

High school girls throughout Essex County are eligible to represent any chartered parish in the Snow Queen competition. Candidates must register with the Essex County CYO Office, 425 Bloomfield Ave., Montclair before Friday, Dec. 31.



LIVE LOBSTERS SPECIAL

1-3 LB. 1.99 LB.

3-6 LB. 1.79 LB.

FRANKLIN SEAFOOD CO.
469 Franklin Ave., Nutley, N.J.
667-0955 • Free Parking

Newark Museum Show Has Prize Winning Doll

Twenty-five award winning dolls from the Salvation Army's Christmas doll collection will be on view in the Junior Museum of the Newark Museum, 49 Washington Street, today through the 16th.

For Your Christmas Gift Shop At

Expressions



70 WASHINGTON ST. BLOOMFIELD

YOUR CLOTHING NEEDS

748 6636

Ventura

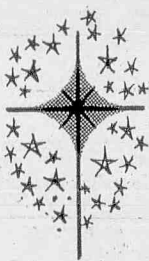
Ventura in his 'n her cases absolute luxury in sleek, contoured cases banded in aluminum with deep, deep colors permanently protected by diamond-like vinyl for packing, the soft sides and fully packable interiors cradle clothing and keeps wrinkles to a minimum. And to top it off, the convenience of keyless combination lock and soft, cushiony handles.

Jumbo Pullman \$62.50
Pullman \$52.50
Air • Nite \$42.50
Cosmetic Case \$42.50
Sholdo-Tote \$30.00

Zimmer TRUNK COMPANY
DIAL 779-6572
L. LAFFERTY & PASSAIC
Mon. & Fri. 9 to 9 P.M. • Tues., Wed., Thurs., Sat. 9-6 P.M.

Sure To Please A Gift Certificate from Zimmer's

Christmas Shop at 'JNC' Every Evening 'til 9!



**Yesterday's Christmas charm
with the "Young Victorian Look"
in washable nylon-tricot
by Formfit-Rogers!**

What a lovely galaxy of loungewear by famous Formfit-Rogers. . . Luxuriously lace trimmed long gown in Red Pepper S,M,L (\$9). Elegant hooded robe, whisper soft nylon. Red Pepper S,M,L (\$14). Mini short gown, that's great for the dorm, comes with panties, S,M,L (\$6). Then our rare beauty, the short gown that's lavishly lace-trimmed. Scoop neck bodice. A dream to wash. Great for travel. Red Pepper. Sizes S,M,L (\$6). Also available in Navy and Aquarius. Make her happy. We can help.

Janette Nutley Center, Sleepwear Salon, Main Floor

Janette Nutley Center

Park in the Spacious Municipal Plaza
and enter thru JNC's convenient Rear
Entrance! Makes Shopping Easier!

It's a wonderful time to select your
Christmas Gift Certificate. Beautifully
gift wrapped. Quite different.
Ours alone!



Rec Football Sees A Full Slate Of Action

American Legion behind the double threat of Alan Cervasio marched past Jolly 32-0 in the Belleville Recreation Department Football League. Alan accounted for over 100 yards in only four plays. The American Legion placed six quick points on the board when Cervasio rifled a touch down pass to John Guarino.

After stalling a Jolly drive, Tony Marino was on the receiving end of another touch

down pass from Alan. In the second half the American Legion stuck to the ground and Alan demonstrated he also has running power as he plunged over his guards for two tallies. John Guarino swept his own end for the final score.

The American Legion team will miss the services of Chris Tremel, who was operated on for a similar injury that has bothered the New York Giants running star Ron Johnson.

Biancardi's rolled over Devon 27-0. The unique thing

about this victory is that four different players scored for the Biancardi team. Tony Biafore opened the scoring by hitting John Clarizio with a long scoring stride. Bob Giordano followed with a 40-yard gallop off of his center. In the second half Mike Ramucci

scored the third touch down on an excellent draw play covering 65 yards. The final tally resulted when Nick Cancelliere returned an intercepted pass one hundred and one yards.

The Fountain gushed past the Auxiliary Police 24 to 7.

Peter Liloia running behind a power seep scored on a 27-yard run. On the next series of offensive plays Steve Pagano darted into the end zone from an inside reverse. In the fourth quarter Tony Malanga was involved in the final two Fountain scores. The first

score resulted when Tony found Tony Speers all alone in the end zone, and the second six points was the work of a fine run back with an intercepted pass.

The Vee Bees buried Landolphi 38-0. Ronald Grolimond accounted for three touch

downs, two on runs netting 79 yards while the third came about following a short punt. Tony DelVerina passed for two scores of 41 and 33 yards respectively to Bob Freda and Neal Murray. Scott Grant rambled across the goal-line for the sixth Touch-Down.

CYO Cagers To Open

Fourty-four teams have opened play in the three division of boys' basketball leagues being sponsored this winter by the Essex County CYO.

The largest grouping of teams, 25, are entered in the Grammar School League. Competing in Division A at Mt. Vernon School in Newark are Sacred Heart of Vailsburg, Immaculate Conception, Montclair; St. Ann's, Newark; Holy Name, East Orange; St. Thomas the Apostle, Bloomfield; and St. Mary's, Nutley. Games are played on Saturday mornings.

Playing in Division B at St. Paul's School, Irvington, are St. Paul the Apostle, Irvington; St. Joseph's, Maplewood; St. John's, Orange; St. Leo's, Irvington; St. Philomena, Livingston; and St. Venantius, Orange.

Competing in Division C at Essex Catholic High School in Newark are St. Michael's, Newark; St. Philomena's B team, Holy Spirit, Orange; St. Aloysius, Newark; Our Lady of Lourdes, West Orange; Sacred Heart, Bloomfield; and St. Joseph's, West Orange.

Division D, which plays at St. Benedict's Prep in Newark, includes St. Bridget's, Newark; Holy Family, Nutley; Queen of Angels, Newark; St. Peter's, Belleville; St. Peter Claver, Montclair; and St. Anthony's, Belleville.

Competing in the Junior Division at Newark West Side High School on Wednesday evenings are St. Joseph's, Maplewood; Holy Family, Nutley; St. Ann's, Newark; Stella Wright, Newark; St. Rose of Lima, Short Hills; and Queen of Angels, Newark.

St. James, Mt. Carmel, St. Benedict's, St. Casimir's, St. Lucy's and St. Ann's, all of Newark, are in the Senior Division along with St. Thomas, Bloomfield; Holy Spirit, Orange; St. Peter's, Belleville; St. Philomena, Livingston; Immaculate Heart of Mary, Maplewood; St. Joseph's, West Orange; and St. Joseph's, Maplewood.

Area Parks Open Skating Is Scheduled

Several interpretive nature walks and slide programs have been scheduled by the Environmental Science Department of the Essex County Park Commission during December.

Topics such as plant identification, forest management and animal behavior are covered during the walks.

Today an interpretive walk is to start at 10 a.m. at Mills Reservation in Montclair. On December 11 at 10 a.m. there will be a wild flower slide show at the Environmental Center in West Essex Park, Roseland.

Another interpretive walk is planned on December 14 at 10 a.m. at the Elmdale Picnic Area in South Mountain Reservation.

Members of the Environmental Science staff will give a general outdoor lecture and slide program for patients at Clara Maass Hospital, Belleville on December 7 and December 15.

The public is invited to all programs except those at the hospital. There is no charge.

Pianist and Composer To Solo At College

Paul Knudson, New Jersey pianist and composer, will be guest soloist when the Montclair State College Concert Band presents its fall concert in the college's Memorial Auditorium on Monday, Dec. 6, at 11 a.m. and 8 p.m. Knudson will be heard in his own composition, Concerto for Piano and Concert Band.

PORK LOIN SALE!

LOIN END 3 lb. or RIB SIDE 4 to 6 lb.
lb 55¢

LOIN SIDE 4 to 6 lb.
lb 65¢

45¢

Spare Ribs COUNTRY STYLE 58¢

Rib End Pork Chops 58¢

Pork Loin QUARTERED 9 to 11 COPS RIB & LOIN SIDE 68¢

Pork Loin Chops CENTER CUT 98¢

SIRLOIN STEAK **99¢** lb

ITALIAN SAUSAGE HOT OR SWEET lb **69¢**

Pantry Pride

DISCOUNT FOODS

Another New Price Leader Comes to New Jersey!

2nd BIG WEEK GRAND OPENING

NORTH ARLINGTON
PANTRY PRIDE
BELLEVILLE TURNPIKE
and SCHUYLER AVENUE

FRESH MEATS SOLD IN 3lb. PKGS.

GROUND BEEF 65¢ lb

GROUND CHUCK 79¢ lb

GROUND ROUND 98¢ lb

CHOPPED SIRLOIN 98¢ lb

Buy Power Priced Seafood

FRESH CAUGHT SPANISH **MACKEREL** lb **49¢**

PANTRY PRIDE GRADE 'A' FRYERS or BROILERS WHOLE

SPLIT OR CUT-UP lb 29¢

25¢ lb

FARMER GRAY BROILERS OR

FRYERS WHOLE 29¢ lb SPLIT OR CUT-UP 33¢ lb

MILK FED **VEAL TENDERS** **\$1.98** lb

Genuine Artists' Canvases FREE

120 Subjects to choose from... WITH COUPON BELOW AND A \$3.00 PURCHASE OR MORE

"Buy Power" Priced Groceries!

PANTRY PRIDE

SODA 6 99¢

ALL FLAVORS NO RETURN BOTTLE SAVE 14¢

DEL GAIZO IMPORTED 2 77¢

MOTT'S SAVE 19¢

Tomatoes Applesauce 19¢

"Buy Power" Priced!

ORANGE JUICE 49¢

FLORIDA CITRUS half Gal 49¢

BREAKSTONE Cottage Cheese 29¢

PILBERT'S WHOLE FAMILY BAKING 3 \$1.00

Margarine 3 \$1.00

"Buy Power" Priced Frozen Foods!

RAVIOLI 59¢

CELANTANO CHEESE 12-oz pkg 59¢

SAVE 18¢

Dole Juice 6 \$1.00

Potatoes 8 \$1.00

"Buy Power" Priced Produce!

GOLDEN RIPE BANANAS lb **10¢**

POTATOES U.S. No 1 10-lb bag **49¢**

U.S. #1 ONIONS YELLOW GLOBE BULK ONLY lb **9¢**

COFFEE PANTRY PRIDE ALL GRINDS 1-lb can **49¢**

BUMBLE BEE TUNA SOLID WHITE MEAT LIMIT PLEASE SAVE 10¢ 7-oz can **49¢**

SACRAMENTO TOMATO JUICE LIMIT PLEASE SAVE 14¢ 2 25¢

CASANOVA OIL SAVE 30¢ gal. **\$1.79**

TOMATO SAUCE HUNTS SAVE 10¢ 10 8-oz cans **99¢**

APRICOT NECTAR HEARTS DELIGHT SAVE 17¢ 3 1-qt. 14-oz. cans **\$1.00**

WELCHADE SAVE 11¢ 3 1-qt. 14-oz. cans **89¢**

OCEAN SPRAY CRANBERRY SAUCE JELLIED or WHOLE SAVE 24¢ 4 1-lb. cans **\$1.00**

NIBLETS CORN GREEN GIANT SAVE 45¢ 5 12-oz. cans **\$1.00**

WHITE TUNA CHICKEN OF THE SEA SOLID - SAVE 8¢ 7-oz. can **49¢**

REALEMON LEMON JUICE SAVE 12¢ qt. bot. **47¢**

WE REDEEM U.S.D.A. FOOD STAMPS

PANTRY PRIDES RAIN CHECK POLICY

IF AN ADVERTISED ITEM IS TEMPORARILY OUT OF STOCK PLEASE ASK FOR A COMPARABLE ITEM OR RAIN CHECK GOOD ANYTIME AT ANY PANTRY PRIDE STORE

SAVE \$1.22 AN EXTRA WITH COUPONS AT RIGHT

Scotkins DINNER NAPKINS 3c OFF SAVE 6c pkg **19¢**

Fab Detergent 10c OFF 3 lb. box **69¢**

Apple Pie PANTRY PRIDE 1 lb. 6-oz. pkg **39¢**

White Bread PANTRY PRIDE 12 oz. loaf **\$1.00**

Pound Cakes ASSORTED BABY pkg **41¢**

Goodman's DIET & UNSALTED MATZOS SAVE 27¢ 3 12-oz. pkgs **\$1.00**

Wesson Oil SAVE 30¢ gal. **\$2.29**

English Muffins PANTRY PRIDE 12 pkgs **49¢**

Rolls BROWN N' SERVE PANTRY PRIDE 3 pkgs **\$1.00**

Coffee Rings PANTRY PRIDE DANISH 49¢

VALUABLE COUPON WEEK 7 DEC. 8 to DEC. 14

GOOD FOR ONE 12 x 24 CANVAS FREE!

with purchase of \$3.00 or more

99¢ VALUE LIMIT 1 ONE COUPON PER FAMILY

"Buy Power" Priced Deli Dept.!

TRUNZ BRAND FRANKS ALL MEAT 1-lb pkg **59¢**

UNION IMPORTED HOLLAND Canned Ham 7-lb can **\$1.98**

OSCAR MAYER Sliced Bacon REGULAR OR THICK 1-lb **89¢**

"Buy Power" Priced Appetizing Dept.!

ALL MEATS & CHEESE SLICED TO ORDER

BOILED HAM IMPORTED lb **\$1.38**

AMERICAN KOSHER SKINLESS **Kosher Franks** lb **79¢**

Crisp Rolls FRESH BAKED doz **89¢**

Progresso

Clam Sauce RED or WHITE SAVE 8¢ 10-oz can **39¢**

Bread Crumbs PROGRESSO SAVE 10¢ 15-oz can **39¢**

Olive Oil PROGRESSO SAVE 14¢ gal. **\$1.29**

SoHotPeppers PROGRESSO SAVE 6¢ 10-oz. jar **89¢**

White Vinegar PROGRESSO 4-5 qt. SAVE 6¢ or 4 qt. **33¢**

VALUABLE COUPON 15¢ OFF! 1-OT 1-PT BOTTLE **Wesson Oil** LV 10 15 MFR 1 LIMIT 1 ONE COUPON PER FAMILY COUPON GOOD THRU DEC 14

VALUABLE COUPON 50¢ OFF! 8-OZ JAR FREEZE DRIED INSTANT COFFEE **Maxim** LV 10 50 MFR 1 LIMIT 1 ONE COUPON PER FAMILY COUPON GOOD THRU DEC 14

VALUABLE COUPON 12¢ OFF! 1-OT BOT INDUSTRIAL STRENGTH **Drano** LV 10 12 MFR 1 LIMIT 1 ONE COUPON PER FAMILY COUPON GOOD THRU DEC 14

VALUABLE COUPON 30¢ OFF! PKG of 50 STORAGE FOOD BAGS **Glad** LV 10 30 MFR 1 LIMIT 1 ONE COUPON PER FAMILY COUPON GOOD THRU DEC 14

VALUABLE COUPON 15¢ OFF! 10-OZ PKG THREE DIAMOND BRAND **Brook Trout** P.P. LIMIT 1 ONE COUPON PER FAMILY COUPON GOOD THRU DEC 14

WE RESERVE THE RIGHT TO LIMIT QUANTITIES NOT RESPONSIBLE FOR TYPOGRAPHICAL ERRORS ALL PRICES EFFECTIVE WED. THRU TUES. EXCEPT FRESH BAKERY PRODUCTS PRICES EFFECTIVE MON. THRU SAT

Gas Shortage To Hurt Area Consumers

Failure of federal agencies to stimulate exploration for natural gas has created a supply shortage that will ultimately cost New Jersey consumers millions, the president of Public Service Electric and Gas Company said today. Because of the shortage, utilities throughout the nation are scrambling for alternate sources of supplies and the alternates will cost about twice as much, Edward R. Eberle said.

"The gas shortage is not due to a lack of gas in the ground," he said. The wellhead price for gas set by the Federal Power Commission is just too low to encourage exploration by gas producers. The lack of tax incentives and the reluctance of the Department of the Interior to sell leases on federal lands in areas where gas is known to be has also contributed to the supply shortage.

"As a result," Eberle said, "Public Service and other utilities have had to turn to other means of supply, such as importing liquefied natural gas and manufacturing synthetic gas from petroleum products. Both of these alternatives will require the investment of large sums by Public Service to build the needed facilities," he said. "Costs will range from 75c to \$1 per thousand cubic feet. Domestic natural gas delivered by pipeline into

the New Jersey area costs about 43-51c per thousand cubic feet. The price differential clearly indicates that it would be in the public interest to increase the price of gas at the wellhead and change leasing policies in order to stimulate domestic exploration."

Public Service has been advised by its two largest suppliers of their inability to deliver the volumes of gas to which the company is contractually entitled this winter. However, in spite of these expected curtailments of supply, Public Service, the third largest electric and gas utility in the nation, has indicated that it expects to serve all of its approximately 1,300,000 customers without cutback this winter, with the exception of "interruptible" customers. There are less than 100 of these customers - industries, for the most part, that buy gas at a lower rate with the understanding that it will be shut off during peak demand periods.

To augment its supplies this winter, Public Service has arranged for the purchase of 22 million cubic feet per day of refinery gas, plus 100 million cubic feet of liquefied natural gas on a short term basis and has expanded propane gas facilities at its gas plants and doubled the use of jumbo propane tank cars.

The company has begun

building a liquefied natural gas storage facility in Burlington Township. This facility will supply the equivalent of 300 million cubic feet of natural gas to the system starting in the 1972-73 winter.

It is helping to finance another liquefied natural gas terminal and storage facility on Staten Island from which it will receive five billion cubic feet of gas annually via a pipeline under the Arthur Kill. These facilities

are scheduled for completion prior to the 1973-74 winter. The company also plans to build a plant in North Jersey that will produce up to 125 million cubic feet per day of synthetic natural

gas from petroleum products. Operation of the plant is dependent upon a decision by the Federal Oil Policy Committee on Public Service's request filed last May for permission to import the necessary

feedstocks. Further delay by the Oil Policy Committee may make it impossible to have the plant ready for the 1973-74 winter, the time when this supply is urgently needed. The company has also

begun exploration for gas reserves in the Southwest in conjunction with a gas exploration firm. Several wells are now being drilled. The company is optimistic that these steps will be successful but costly.

October Is Reported As Warm And Wet

October goes down on the records as warm and wet, according to the monthly meteorological summary issued today by Harold D. Duflocq of the U.S. Cooperative Weather Station of the National Weather Service at Union College.

While temperatures ranged from a low of 38 degrees on October 13 to a high of 78 degrees on October 5, the average

monthly temperature was a mild 60.9 degrees, Mr. Duflocq said. This was 5.8 degrees above average. Total rainfall was 4.06 inches which was 1.54 inches above normal. The greatest amount of rain to fall in a 24-hour period was 1.89 inches between October 9 and 10. This brings the total precipitation for the year to 48.61 inches. Total precipitation for 1970 was 35.83 inches.

MICKEY ROONEY'S TALENTOWN, U.S.A., INC

234 WASHINGTON AVE., BELLEVILLE, N.J. 759-4994

PARENTS, GRANDPARENTS, UNCLES, AUNTS, GOD-MOTHERS, GODFATHERS, ETC.,

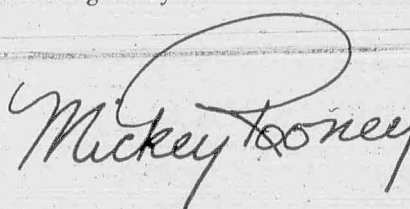
Do you have a talented youngster in your family? Help develop that special talent at one of our classes.

Give your special boy or girl a Christmas present they'll remember you by for one whole month...or maybe forever. A CHRISTMAS GIFT CERTIFICATE from my school.

A one month certificate (good for any one class) will cost you only \$15.00 (You save \$4.00 off the regular tuition fee.)

Just fill in the coupon and I'll see your special boy or girl gets the gift certificate in time for Christmas signed by me.

Best of luck,



Dear Mickey,

Enclosed is my check or money order for \$15.00. Please send a Christmas gift certificate to:

NAME: _____

ADDRESS: _____

TOWN: _____

PHONE: _____

SENT BY: _____

ZIP: _____

CLASSES IN

CHARACTER DANCE

BATON TWIRLING

TAP

FENCING

(OTHER)

PRE*TEEN**TEEN**YOUNG ADULT (GUYS AND GALS 3 YEARS AND OLDER ARE ELIGIBLE TO ENROLL)

DRAMA

BALLET

ACROBATICS

MODELING

JAZZ

IT'S CHRISTMAS AT Lipton's in Bloomfield

What a beautiful Christmas it's going to be, with Kayser

Kayser lingerie - Main floor



A luxurious gown to greet the late hours...this frothy nylon peignoir with elegant Scroll lace drifting on the romantic front and back pleated yoke. Filmy full gathered sleeves. The gown of Crepeset® has Scroll lace cascading down the button front bodice. S-M-L \$23. White, Bonnie Blue, Grape Icing, Bashful Pink.



A dream of a peignoir set...long, sheer and flowing. Luscious Scroll lace enhances the romantic front and back pleated yoke. Delightful full gathered sleeves. The gown of Crepeset® has Scroll lace cascading down the button front bodice. S-M-L \$25. White, Bonnie Blue, Grape Icing, Bashful Pink.



For the loveliest way to end the day...a luxurious Crepeset® nylon softly pleated shift with elegant Scroll lace cascading down the buttoned bodice. S-M-L \$9. White, Bonnie Blue, Candy Mint, Grape Icing, Bashful Pink.



For dreamy sleeping...a long and elegant Crepeset® nylon gown, softly pleated. Luxurious Scroll lace ripples and scallops trace the deep cut buttoned bodice. S-M-L \$10. Bonnie Blue, Bashful Pink, Candy Mint, Grape Icing.

50 Broad Street, Bloomfield, N.J. Open every evening 'til 9 P.M. Saturdays 'til 5:30 P.M. Courtesy Parking available

'Life' As Seen By A Student

It's A Never Ending Road With Obstructions

By Jerry Price

What is life. Is it a never ending road with obstructions that mar and soil those who choose to travel along its rugged and treacherous stretches, or perchance does it lead to a golden valley, where ecstasy is only another reminder of paradise that exists around you. Some say that life is what you make of it; nevertheless, there are always hardships and sorrows, and we must transcend through those seasons which we call life. The seasons like man have their fate predestine the moment their existence

begins, following them to the final moment when they end.

From the minute your born, life sets you off on a never ceasing trek down a winding road, where misery and sorrow leark beyond every curve, and behind every hill. Journeying on through your childhood, you begin to lose your innocents, and see the world for what it really is; corrupt, hard, cruel, and deadly. Sitting back and seeing the truth was hard enough, but now your childhood is gone, the time has come for you to take your place in society, and confront the diseases you had always seen from afar. Your a man now, temptation and defeat was greater than your will could stand. So you dealt with the Devil and sealed your fate, and now you have become what you abhorred and feared most in your life.

Despite all the love and protection, one cannot escape from the pain of physical torment, or the sorrow that is felt upon the loss of a loved one. Though these facets of life cannot be avoided, they can be greatly outweighed by all the happiness that has been experienced throughout one's existence upon this confused earth.

When God blessed man with the miracle of life, he was born pure and unchasted, and again life started him off down a rolling path toward eternity. It will be different this time, because when one has love and guidance standing firm, building him strong in both mind and body, he will pass through those years of confusion learning to understand the people and the world around him. When the time comes for him to transcend into manhood, and face up to all the culties and hardships that society places upon him, he will be able to understand, and then go on and seek the wisdom with which his understanding has led him to. Yet, his life is

Biancolo Honored By College Dean

Frank Biancola of 6 Bernice Road, Belleville, has been named to the dean's list at Saint Peter's College, Jersey City. Only those students with an average of 3.5 or better for the previous academic year are named to the list.

not complete, he has not found love; without love all that he has gained would soon dwindle, slowly turn into dust and blow away. When upon traveling along the greener path, he encountered a maiden as wise as he; seeing apart of oneself reflected in each other, they fell in love. Now, both can joyously cross over the hill, and enter into the golden valley, where they will live in peace throughout all eternity.

Naturally neither of the above will fully come to pass, and believing that life is what you make of it may prove to be a disappointment. Obviously, there are just some aspects

of life that have to be endured, while others just can't be over come. Nevertheless, life like the constantly changing seasons must run its fateful course from beginning to end, leaving the traces of both pain and happiness on the man it has touched.

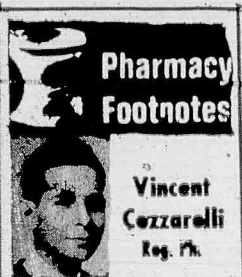
Since the seasons begin in spring and end in winter, so then must man's life. The instant man is born and life flows throughout his body, the spring of his life begins, and through these early days of his existence, he will learn and build moral and ideal foundations that he will use the rest of his life. During this stage he will become confused and

troubled, with the world around him, and then without any warning thrown into it, and expected to survive. It is in the latter part, of the spring of life, where he will suffer the pains of romance, and then hopefully find an everlasting love to guide him in the seasons ahead. At this point he passes into the summer of life, where he finds stability and understanding with the love of his mate. It is during this time when his existence is most pleasurable, with the next season slowly drawing near upon him, only being noticed by the aging of the body, and the wisdom that experiences has brought to the mind. The fall of his life is now at hand, and it is all

down hill, and as he sits back fondly looking at past experiences, some that were good, and others that were cruel, but having endured them has made a better man of him, he smiles and feels a pleasant warmth within himself. Winter is now upon him, and he can with peace of mind, close his eyes and enter into that eternal rest which we call death.

Answering the question what is life? can only be answered by one, who has reached the winter of his life, for then he must sum up the total experiences he has endured, both good and bad, and all the wisdom he has endeavored to search for and found. It is only then,

when one can truly say "what life is" and anytime previous to that point, one can only cite and make comparisons as to what life is.



Pharmacy Footnotes

Vincent Cazzarelli
Reg. Ph.

Until 1954 efforts to replace inconvenient insulin injections with insulin taken by mouth were unsuccessful. In that year, however, a new drug was finally developed in Germany which helped to control diabetes. Since then others have also been invented. Most mild cases of diabetes in patients over 40 which do not respond to diet control may be controlled with these medications. According to the AMA, these medications either stimulate the pancreas to produce insulin, or they increase the sugar uptake by the tissues. Truly the developments of modern science are miraculous.

There's no inconvenient waiting for prescriptions. Come to **ROSSMORE PHARMACY**, 338 Washington Ave., 759-1968, 759-1956 when you need prompt service. Complete lines of Cosmetics and Toiletries, Cameras and Gifts—Purchase all your Christmas Gifts at Rossmore...Hours: 9 AM-10 PM Daily, 9 AM-9 PM Sun.

HELPFUL HINT

A regular amount of exercise daily is a fine way to maintain a good sugar balance.

1971
1972

BELLEVILLE HIGH
School News

WILLIAM HAMILTON
School Page Coordinator

The information on this page is provided by the staff of the SPOTLIGHT.

NORTHERN NEW JERSEY OIL CO.
QUALITY FUEL OILS
COMPLETE HEATING SYSTEMS
For Home and Industry
Prompt Delivery and Service
DIAL 484-4242
2052 McCarter Highway, Newark, N.J. 07104

CATERING BY
ANGELO
26 FIRST AVE., BLOOMFIELD

Planning a Party?

- COMPLETE SERVICE
- SMALL OR LARGE PARTIES IN YOUR HOME

HOT ITALIAN
BUFFET
Our Specialty



"Be A Guest At Your Own Party"

Call

For Free
Catering Guide

748-7487 • 661-1894
Angelo's Caterers 26 First Ave., Bldg.

RCA and ANCO

CHRISTMAS SHOPPERS GUIDE



The COSMOS Model FQ-909 21" diagonal picture

**EXCITING
GIFT IDEAS
FOR YOUR FAMILY...
AND FOR EVERYONE
ON YOUR SHOPPING LIST**

Give RCA... "The Gift That Keeps On Giving"

XL-100 by RCA

In a handy, compact table model with its own rollabout stand.

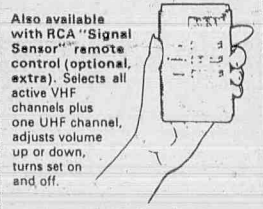
Here's the answer to your shopping problems for the whole family. Give them the ultimate in color viewing enjoyment—XL-100, RCA's 100% Solid State AccuColor. The Cosmos incorporates the luxury features of the big consoles into a compact table model. Circuitry designed for extended life. RCA's finest color picture tube with black matrix design. An automatic tuning system that makes tuning a snap. And, with matching stand, you get the added convenience of easy room-to-room relocation.



AccuMatic color monitor locks in a normal range of color.

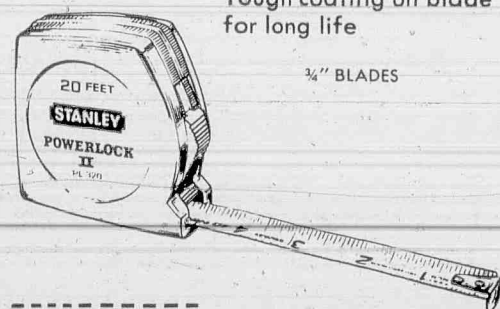


12 plug-in AccuCircuit modules make for easy service.



Also available with RCA "Signal Sensor" remote control (optional, extra). Selects all active VHF channels plus one UHF channel, adjusts volume up or down, turns set on and off.

Nutley's most elaborate color show room.



Positive blade lock — no creeping

Tough coating on blade for long life

3/4" BLADES

PL312 \$3.89
(12 FT. SIZE)
PL316 \$4.59
(16 FT. SIZE)
PL320 \$5.39
(20 FT. SIZE)

**THE RULES THAT
TAKE THE NEW
REPLACEMENT
CARTRIDGE**

STANLEY HELPS YOU DO THINGS RIGHT!



TELEVISION SERVICE
Service On All Makes

ANCO SERVICE COMPANY

257 PARK AVENUE (Corner of UNION) NUTLEY

667-1918

STORE HOURS:
Mon. Thru Fri. 9 A.M. - 9 P.M.
Tues., Wed., Thurs., Sat. 9 A.M. - 4 P.M.

Color Specialists

Antennas—Stereos—Auto Radios

RCA

Factory Authorized Sales & Service

The Belleville Times

News



OUTSTANDING DEFENSIVE BACK was Ralph Lukowiak, shown above receiving trophy from Bob Cassin of the Belleville Varsity Club.



FLORAL CENTERPIECE at the Varsity Club head table was presented to Mrs. Rocco Cafone, mother of head coach Rocco Cafone (right), while Bill Ellis, president of the club, assists.



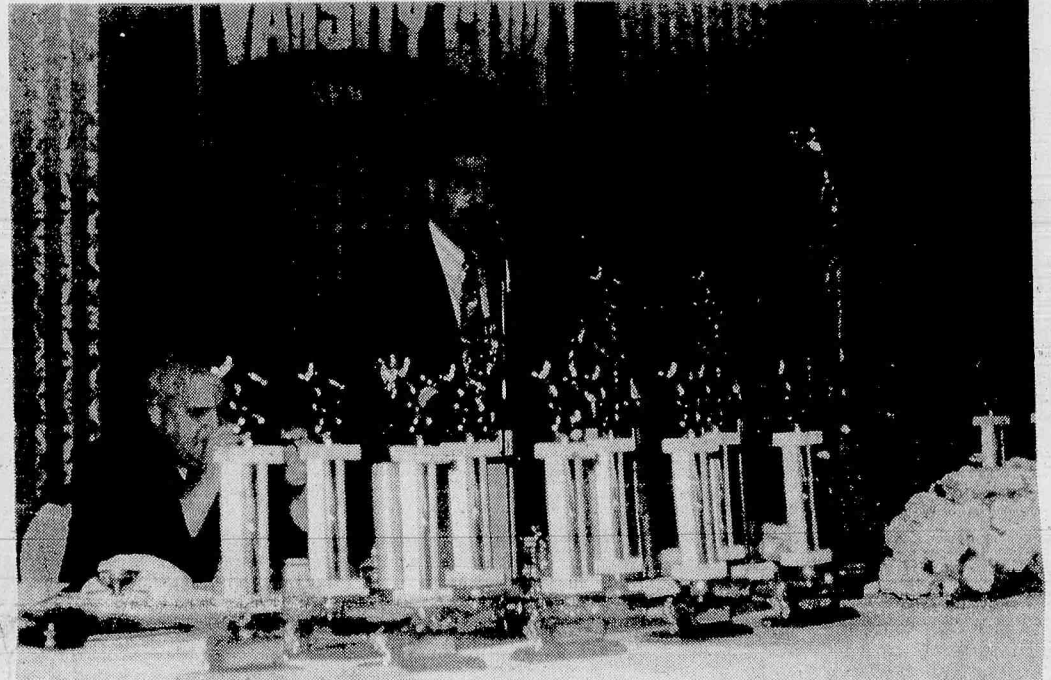
COACHING AWARD for appreciation was received by assistant coaches of grid team, including Anthony Sorrentino (right), who was awarded by team co-captain Michael Pici.



SENIOR Phil Bruno, Bellboy quarterback, hit his target Friday evening when he pinned his mother with traditional flowers as part of Varsity Club fete.



GAME TROPHY for Bellboys winning the Belleville-Nutley tilt was presented to Doc Ellis (right) by Third Half Club of Nutley representative John Lervis.



HEAD COACH ROCCO CAFONE gives his comments on the season to those present Friday evening at the Robin Hood Inn, Clifton, for the annual Varsity Club banquet. Cafone, when introducing seniors, gave comments on each player.

Varsity Club Lauds Bellboy Senior Gridders



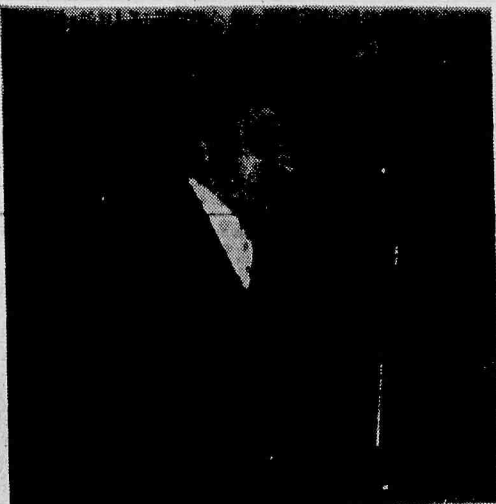
LENDING A HELPING HAND to Varsity Club president Doc Ellis in assisting with the Belleville-Nutley trophy are team co-captains Michael Pici (left) and Joe Lotruglio (right).



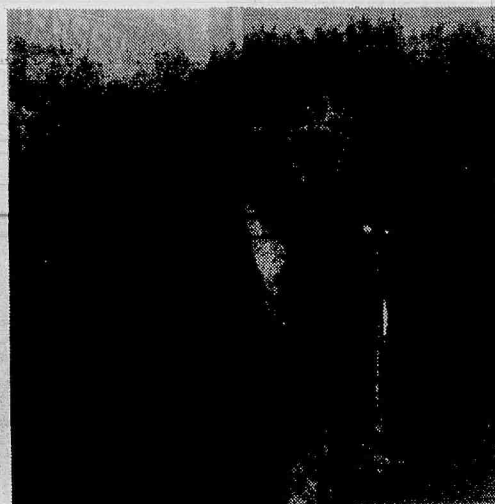
RECEIVING HANDSHAKE from Varsity Club member Hank Vitiello is Tony Pigninelli, who won the outstanding defensive lineman award.



OFFENSIVE STAR Phil Bruno, quarterback of the Belleville squad, took top offensive back award from the club. Member Wayne Worley presents trophy to Bruno.



JOE CERVASIO, a former Bellboy grid standout who also played for Cornell University, was the guest speaker at the Varsity Club affair.



EDWARD T. BERLINSKI, former Bellboy mentor who coached team in 1947, addresses current squad. Berlinski was one of many 1947 players to attend affair.



BOWING HEAD in prayer is Anthony Greco, superintendent of schools, while the Rev. Howard Day of Montgomery Church delivers invocation.



JAMES A. SKIDMORE JR., a former Belleville resident, now known nationwide, was the feature speaker at the annual Varsity Club banquet honoring football seniors.

Bellboy Season Examined For Year

The season totals on this page reflect the 1971 Belleville varsity team performance both on the team level and one the individual plane. Eight of the nine regular season games are included when the total statistics were compiled. Only the first contest of the year, the Bayonne game, was excluded because totals from that tilt were not available.

Leading the offense in scoring was junior Joe Troise, who, hopefully, will be back next season for the local club. Troise led all scorers with 38 points. He topped second leading scorer Joe Lotruglio by 20 points. Troise, who was a threat both on the long pass and the short run, scored most of his points on long receptions from quarterback Phil Bruno.

Taking rushing honors was Joe Lotruglio, who was hurt in the middle of the season but still ran hard and long enough to gain top totals in that department. Lotruglio had a 402-yard total in 118 attempts and was considered the heart of the Bellboy offensive attack, setting up for the big pass play.


Phil Bruno excelled in the passing department while completing almost 50 per cent of his aerial strikes. Troise took top laurels in the receiving department and was also the top kick off specialist for the club. Ralph Lukowiak led the defense in interceptions with five.

Suit Club Winners' Doug Conway Nutley E.C. Wackenhuth North Caldwell

FRANKLIN MEN'S SHOP
228 FRANKLIN AVE.
at the Center
hours 9 AM to 9 PM
Mondays and Fridays
9 AM to 6 PM
Tues. - Wed. - Thurs. & Sat.
667-0189

ANCO IS THE ANSWER FOR ALL MAKE T.V. SERVICE
257 PARK AVE
NUTLEY, 667-1918

BECK'S COLUMN



MAX BECK

Many people want to buy portable color TV sets these days. When we ask them what size they have in mind, mostly they want a 17" or 19" set. These were the popular sizes in black and white and they were heavy enough. When they see the size and are told the weight of a color TV set of the same size as a black and white set, invariably they ask us, "Why do they call them portable?"

Actually a color set of this size is not portable at all. They are much too heavy to be carried. The factories make carts with casters available for such sets, so a more appropriate term would be "moveable", portable they are not. The bad parts about it is that most of these sets are sold with "in shop service". This is strictly a gimmick to offer them at lower prices. If the price would include service in the home, it would have to be higher. It is always unpleasant if a customer tells us to make a home call, for which they have to be charged, if the set is not brought into the shop, which is one condition of the sale. Every manufacturer and dealer knows all of this, but the factories just do not want to change it.

If you want to have a portable color TV, in the correct sense of the word, you will have to settle for a much smaller picture, keeping in mind that you may have to bring the set some day to the repair shop under the terms of the guarantee.

We service what we sell
BECK'S RADIO TV HI-FI
Nutley 667-2275

Season Stats Totals		
	Belleville	Opponents
First Downs	105	93
Total Yards	1,675	1,567
Yards Rushing	804	954
Yards Passing	872	613
Passes Attempted-Completed	54-115	52-98
Interceptions By	13	9
Fumbles	9	10
Fumbles Lost	7	6
Punts	33	26
Punting Average	28.5	28.0
Penalties	322	400
Scoring	91	84

Rushing		
	Times Carried	Yards
Belleville	118	402
Lotruglio	41	152
La Luna	29	122
Cuzzi	42	95
Troise	5	20
Cervasio	16	48
Risimini	7	7
Ciallella	10	-42
Bruno		
Opponents	279	954

Passing		
	Attempts	Yards
Belleville	51-104	851
Bruno	3-11	21
Lotruglio	52-98	613
Opponents		

Receptions		
	Number	Yards
Troise	15	337
Porecco	15	181
Lotruglio	14	104
Cicalese	6	198
Risimini	2	35
La Luna	1	7
Cervasio	1	10
Opponents	52	613

Interceptions		
	Number	Yards
Lukowiak	5	84
Frank	3	35
Borgo	2	18
Egidio	2	00
Luongo	1	00
Opponents	13	137

Punts		
	Number	Yards
Lotruglio	33	942
Opponents	26	729

Punt Returns		
	Number	Yards
Cervasio	5	40
Egidio	4	14
Opponents	9	54

Kick Offs		
	Number	Yards
Troise	20	759
Telesco	2	67
Opponents	20	786

Kick Off Returns		
	Number	Yards
La Luna	4	81
Cervasio	3	46
Edigio	2	62
Cuzzi	2	39
Risimini	1	20
Porecco	1	10
Portuese	1	6
Opponents	16	269

Scoring		
	TD's	PAT's
Troise	6	1
Lotruglio	3	0
Bruno	0	7
Porecco	2	0
Cicalese	1	0
Risimini	1	0
Total	13	8
Opponents	12	6



THE BIGGEST AND SMALLEST wrestlers on the local squad were seen together in action this week during a practice session. While coach Jim Silvestri officiates, 93-pound Rocco Cuozzo tests talent with 320 pounder Lorenzo Cecere.

Progress Being Made
Bellboy Grapplers
Huge Question

According to head coach James Silvestri, the current crop of Bellboy grapplers still look like a big question mark. Practice sessions to date have been good but speculation about the upcoming season rate from poor to great.

"I can't really say how we are going to fare this season because I don't really know. I have a tough bunch of boys out for the squad this year but most of them are green. We have to teach them the correct moves before we see any positive results," remarked coach Silvestri.

Many of this season's prospective wrestlers seem to be very aggressive but lack the experience to give positive results on the mats. Several top varsity football players are now in the transition from the gridiron to the mats and according to Silvestri, they show promise. The former gridirers include Bob Luongo, a junior who called signals for the football defense. Luongo is long on toughness and desire but short on experience. Although he has never wrestled before the coach reports he has good potential. Another footballer is Mike Edigio, who was a varsity starter in his sophomore year but sat out last season's wrestling campaign. Edigio is reported to be "rusty" but has the experience to make the grade in the 130-pound division. Brian Banda is the top prospect. A starter for the Bellboy grapplers last year, he should again excel at the 115-pound level.

"We are slowly progressing," said Silvestri. "We have a large turnout this year, about 45 to 50 boys, and it is difficult trying to teach all of them the proper moves."

The coach believes the center of this season's team will revolve around Chico Lejo

and the three grapplers sharing captain duties. Showing the best progress to date are John Mustacchio, Walter Bennett and Fred Arena. The three should comprise the heart of the team.

The Bellboys have scheduled their first scrimmage for tomorrow when they face West Side of Newark on the-Belleville High School mats.

"Scrimmages should tell me a lot on how the team is really shaping up," added Silvestri.

After the West Side scrimmage, Belleville travels to Livingston and then West Morris for more pre-season tune-ups. Silvestri thinks the practice battles will provide a better gauge for predictions.

The Bellboys wrestle for real when they face Columbia High School on December 23. After that encounter, the club will take part in the annual Christmas Wrestling Tournament at Bloomfield High School. Rated one of the toughest tournaments in the area, the local grapplers finished a strong third in that multi-club event last season. In the tourney they will be facing the likes of powerhouses West Essex and Seton Hall High Schools. Also billed for the event are St. Benedict's, Bloomfield, Kearny, West Orange (Mountain) and Irvington High Schools.

Belleville again this year will have a tough schedule. According to the coach, the most difficult opponents to face will be Essex Catholic and Montclair, a team that has been undefeated in 45 dual meets. Other teams in the area that are reported to be on the upswing include neighboring Nutley and Bloomfield squads. Kearny is also a club that may have to be respected.

Bellboy Basketball Season
Opens Tomorrow Evening

Belleville's varsity basketball squad travels to Garfield tomorrow evening in the season opener for both teams. Last year the local cagers dropped the decision to the Boilermakers on their way to a dismal 2-17 mark.

Head coach Robert Palma, now in his second season in Belleville, reports that the team has shown steady improvement during pre-season play. Led by co-captains

Ken Zoppa and Mike Petronaci, the local squad should improve upon last year's disaster.

The coach has viewed this season with optimism and believes the team should stay within scoring range for the win in the majority of its games. The Blue and Gold may not be able to beat teams such as East Orange and Bloomfield but the coaching staff is confident that the

Bellboys can play on equal terms with the likes of Nutley and Kearny and other Big Ten teams.

Lost to June graduation is the high-scoring forward Rocco Marotti.

American Motors Dealer
SERVING BELLEVILLE, NUTLEY AREA

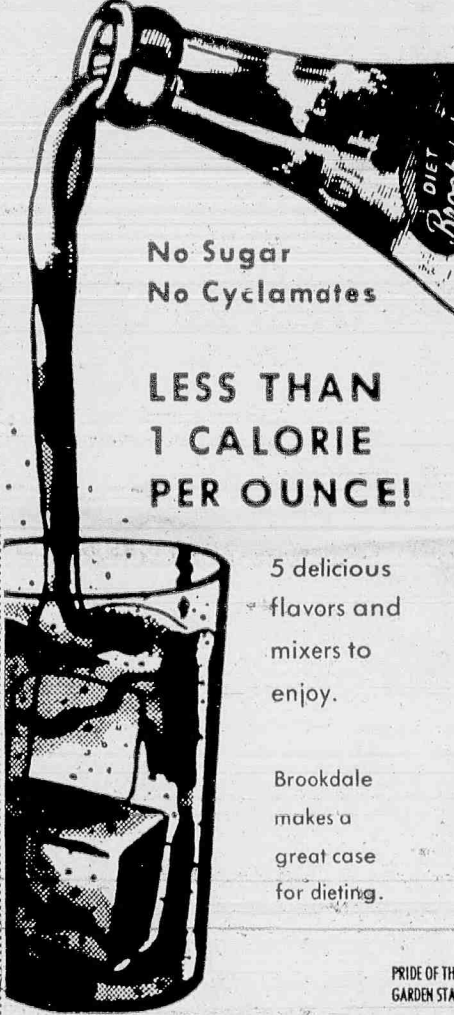
PARK SERVICE Inc.
470 BROAD ST.
BLOOMFIELD, N.J. 748-0600

DON'T CALL US
Just Bring Your AUTO And Title
Or Payment Book To:

Bell-Pike Motors
Cor. Belleville Tpke & River Rd.,
North Arlington
(Across from Arlington Diner)
And pick up a check!

Now - at no Extra Cost!

DIET BROOKDALE



No Sugar
No Cyclamates

LESS THAN 1 CALORIE PER OUNCE!

5 delicious flavors and mixers to enjoy.

Brookdale makes a great case for dieting.

BROOKDALE BEVERAGES
Bloomfield - Clifton • Phone 472-6900

BELLEVILLE-NUTLEY Buick Co.

ANNUAL INVENTORY CLEARANCE!

BRAND NEW 1972 BUICKS

- ELECTRAS
- LE SABRES
- RIVIERAS
- CENTURIANS

FINAL CLOSE-OUT! '71 BUICKS

EXECUTIVE & DEMO CLEARANCE!

- '71 ELECTRA \$4895
- '71 OPEL \$3495
- '71 SKYLARK \$3395
- '71 SKYLARK \$3895
- '71 ELECTRA \$4995
- '71 SKYLARK \$3995

BELLEVILLE-NUTLEY Buick Co.
667-0500
66 WASHINGTON AVE., NUTLEY

Amelia Earhart LUGGAGE...

...IF YOU HAVE AN INSTINCT FOR ELEGANCE

STRIPES by Earhart



OVER 5,000 ITEMS ON 3 HUGE FLOORS

The LARGEST SELECTION of NAME BRAND LUGGAGE
in Passaic or Bergen Counties

Expert Luggage • Trunk and Handbag Repairs

Zimmer

A GIFT CERTIFICATE

6% 5%

The highest rate of return in New Jersey

2 to 5 year savings certificates

special investors and regular passbook accounts

CARTERET SAVINGS
AND LOAN ASSOCIATION
Main Office: 866 Broad Street, Newark, N.J. 07102 • 622-8010
Newark, East Orange, South Orange, Madison, Phillipsburg
All savings are subject to regulations of supervisory authorities and are insured up to \$20,000 by FSILC.

At Robin Hood Inn

Varsity Club Banquet Seen



CORSAGES WERE RECEIVED by Mrs. Robert Cassin and Mrs. Henry Vitiello from the Varsity Club for the women's excellent efforts in this year's Varsity Club Homecoming Float. Husbands (left) Bob Cassin and Henry Vitiello did the honors.



BREAKING A SMILE is this season, Harris received trophy of appreciation from the squad. Harris, who was head coach Rocco Cafone's top assistant

R. Calderone Supply Co.
WHOLESALE DISTRIBUTORS OF
BARBER & BEAUTY SUPPLIES & EQUIPMENT
31 Belmont Avenue Belleville, N.J. 07109
751-2313

**WAREHOUSE
RETAIL OUTLET**
HOURS
Mon., Thurs., Fri.
9 a.m.-3 p.m.
Wed. 9 a.m.-5 p.m.
Sat. 9 a.m.-1 p.m.

Owl \$3.50
Fish \$3.50
Cameo \$1.25

MEN'S COLOGNE
Yu \$1.00
Rebellion \$1.00
Clubman \$1.50
9 Nations \$1.00
Currier & Ives \$1.00
Napoleon \$1.25
If You Dare \$1.00
Brush & Comb Sets 95¢ & up
Women's Cologne \$1.00 & up

Master Heavy Duty Massager \$29.95
Electric Styling Iron \$7.95
Shaving Brush \$2.00
Dep's Dry Styling Kit \$4.95
Shaving Mug \$2.50

LOOK FOR RETAIL SHOPS OPENING IN YOUR NEIGHBORHOOD SOON.

ANY 13 OZ. HAIR SPRAY WITH THIS AD GOOD 12-9 to 12-4

Playgrounds Interviews Scheduled

The Recreation Department will conduct interviews for summer playground positions on December 27, 28, 29, and 30. Men and women who would like to be playground directors should telephone the Recreation Office for an appointment.

Directors with experience in conducting games, teaching arts and crafts and working with youngsters from age six thru fourteen are being sought. Directors who have worked previously and wish to return must also re-apply.

wright arch preserver shoes

FREE!
1 PAIR OF
SHOE TREES
(VALUE \$4.95)
With each purchase
of Wright Arch
Preserver Shoes

Plaza Bootery
483 Franklin Avenue,
Nutley, N.J.

USE OUR
CONVENIENT
SIDE ENTRANCE
FROM OUR EXPANDED
PARKING AREA.

Magnavox

**SAVE
UP TO
\$20**

**holiday
specials**

SAVE
ON
OVER 50
MAGNIFICENT
ENTERTAINMENT
VALUES

**BUY
NOW**

...on fine radios for home or away!

At KASTNER'S in NUTLEY...

What a beautiful
way to say...

*Merry
Christmas*

PRICED
FROM
\$69⁹⁵
TO **\$289⁰⁰**



TAKE IT EASY CHAIRS FOR THE ENTIRE FAMILY

A reclining chair need no longer stick out like a sore thumb in your livingroom or den. These unbelievably comfortable chairs are now beautifully designed and tastefully upholstered to harmonize with the most eye appealing decor. Come in today and see for yourself.

CHOOSE FROM BARCALO . STRATOLOUNGER .
BURRIS and BERKLINE

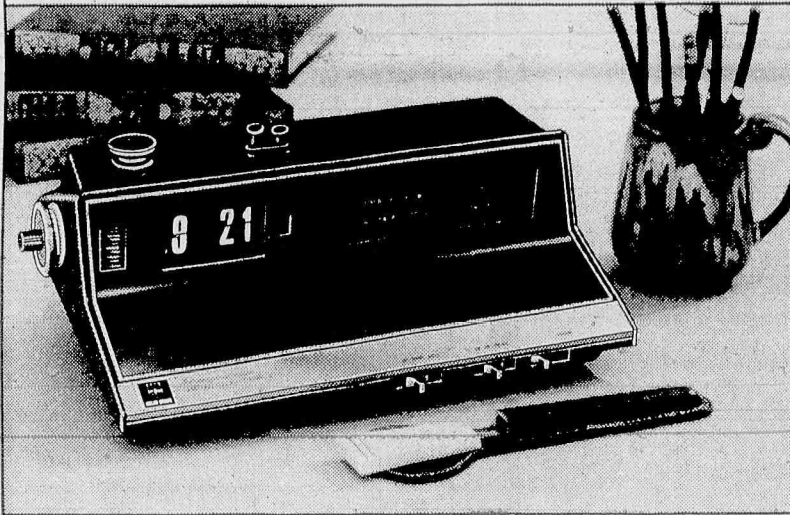
Needless to say, there awaits you a large selection of recliners and rocker-recliners, priced to fit your individual budget.

SO ORDER NOW FOR HOLIDAY DELIVERY ...
Truly your answer to a more CHAIRFUL CHRISTMAS.

KASTNER'S FURNITURE

"FURNISHING FINE HOMES FOR OVER FORTY YEARS"

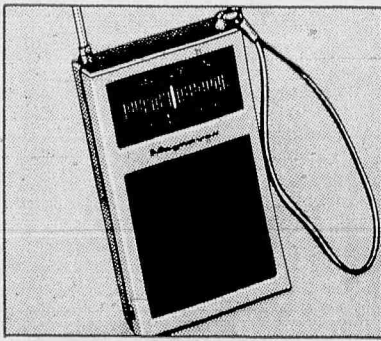
492 FRANKLIN AVE. 667-1384 NUTLEY
FREE CUSTOMER PARKING — OPEN MON. and FRI. until 8:45 PM



SAVE \$5

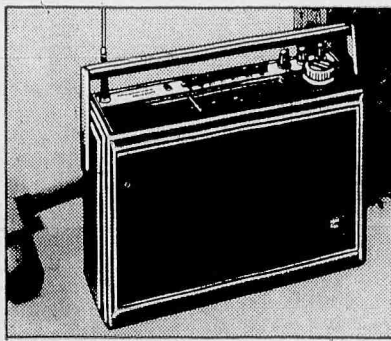
FM/AM Digital Clock Radio—model 1736. Dramatically distinctive. Contemporary as today . . . as exciting as tomorrow. Superior sound reproduction plus great convenience features. No-drift FM/AFC and an illuminated radio dial and flip-type clock. It also has wake-to-music and wake-to-alarm controls, a slumber switch and a wink alarm. As an added convenience, it even has an AM and PM 24-hour alarm set. See it . . . save!

NOW \$49⁹⁵



SAVE \$2 on FM/AM portable radio, model 1221. Only 4 1/2" high, it offers big room-filling sound. Telescoping FM antenna, no-drift FM/AFC, slide rule dial and Vernier tuning. Earphone and batteries included. A great gift!

NOW \$12⁹⁵



SAVE \$20 on multi-band portable model 1214 with FM/AM/MB/SW1/SW2/LW. Fine tuning, FM/AFC, bass and treble controls, push-button illuminated dial, battery meter, earphone and batteries. Great to own or give.

NOW \$59⁹⁵



... during our Magnavox Holiday Specials. See over 50 magnificent sights and sounds—all at great savings . . . and all with famous Magnavox quality and reliability. Stereo consoles and component systems, accessories, color and monochrome TV, radios, tape recorders and portable stereo. All wonderful to own or give.

BUY NOW...SAVE

BECK'S BUDGET PLAN AVAILABLE
"We Service What We Sell"

196 Franklin Ave.,
Nutley 667-4225

BECK'S

DIRECT FACTORY DEALER

Christmas
Store Hours:
9 to 9 daily
Saturday 9 to 6

3 DAYS ONLY THURS. FRI. SAT.

JOHNS

BARGAIN
STORES



Christmas Sale



ALL STORES OPEN EVERY NIGHT TILL 9:00 P.M.

**KIDDY
RIDE 'EM
CART**
• LARGE SIZE
STEERABLE PUSH
CART WITH HORN
1.97

100 PIECES
**ASSORTED
PUZZLES** **77¢**
9 1/2 INCH
LARGE
PLAY BALLS **77¢**
**AMLOID®
CONSTRUCTION
SET** **1.00**

**the original
TINKER
TOY**
• 1,000 TOYS IN ONE
WITH 43 PIECES
• CHILD SELECTS PIECES
BY COLORS
77¢

**TRANSOGRAM®
DOC or NURSE** **1.00**
KITS
**CUDDLY
STUFFED
ANIMALS** **1.00**
**PRIM 'N PRETTY
VANITY
TABLE SET** **1.00**

**CHILD GUIDANCE
TOY®
SKETCH-O-
MAGIC**
• DRAW IN THE DARK
WITH GLOWING COLOR
• WIPES CLEAN IN A
FLASH
• BULB INCLUDED
1.97

**15 FOOT
HOLLY
GARLAND**
• WITH TWO TONE
LEAVES, BELLS OR
BERRIES
77¢

**AMLOID®
CAR
TRANSPORT** **1.00**
**AMLOID®
DONUT WHEEL
SKY DIVER** **1.00**
**JUST LIKE MOM'S
PLASTIC
TEA SETS** **1.00**

**SIX FOOT
CHRISTMAS
TREE**
• WITH STAND, POLE
AND SPARKLING
SILVER ALUMINUM
BRANCHES
• TAKE APART FOR
EASY STORAGE
5.99

**SERVICE FOR 4
LIL' MISS
TEA SETS** **1.97**
**ALL METAL
ASSORTED
TRUCKS** **1.97**
**GIANT SIZE
LINDA LEE
DOLLS** **1.97**

**EACH
P'KG OF 4 ROLLS
GIFT
WRAP**
• THE LATEST
HOLIDAY PRINTS
77¢

**WIDE
RIBBONS
66% YARDS
(200 FT.)
IN 6 ASSORTED
COLORS
WITH HANDY
DISPENSER**
**200 FEET
GIFT
WRAP
RIBBON**
• 3/4" WIDE RIBBON
IN 6 ASSORTED
COLORS ROLLS
• WITH HANDY DISPENSER
77¢

**STUFFED
SITTING
DOLL** **1.97**
**STOCKING STUFFER
TOY
SALE** **3.11**
**25 FOOT
FEATHER
GARLAND** **1.00**

**BOX OF 25
HOLIDAY
GREETING
CARDS**
• LATEST SCENES,
DESIGNS, AND SAYINGS
IN GOLD, BRONZED,
EMBOSSD OR GLITTER
STYLE • WITH ENVELOPES
77¢

**MULTIPLE®
GIANT
PLAY SETS** **2.22**
**BIG BRONCO
RIDE 'EM
HORSE** **2.97**
**14 INCH
HOLLY
WREATH** **77¢**

**EACH
BOX OF 12
HANGING
ORNAMENTS**
• FROSTED AND DECORATED
ORNAMENTS WITH
REFLECTORS
• ALSO BOX OF FOUR
3" SHIMMERING SATIN
ORNAMENTS
77¢

**BULKY KNIT
LADIES
SWEATERS**
• LONG SLEEVE ACRYLICS
IN ASSORTED MOCK
TURTLE STYLES
• SIZES 32 TO 38 IN LATEST
PASTEL COLORS
3.97

**MERRY
CHRISTMAS
WALL
PLAQUE** **77¢**
**BOX OF 35 MIDGET
CHRISTMAS
LITE SET** **1.59**
**30 SHEETS
TISSUE
GIFT WRAP** **44¢**

**EACH
PERMA-PRESS
MEN'S
SPORT
SHIRTS**
• WITH 2 BUTTON CUFF
• STRIPES AND FANCY
PATTERNS IN MOST
WANTED COLORS
2.65


**ASSORTED P'KGS.
GIFT TAGS,
SEALS** **4.11**
**ELECTRIC
TREE TOP
ORNAMENT** **1.59**
**P'KG. OF FIVE
ASSORTED
GIFT BOXES** **77¢**

**EACH
BONDED ORLON
LADIES
FLARE LEG
SLAX**
• ELASTIC WAIST PULL-
ON STYLE IN SIZES
10 TO 20
• POPULAR FALL COLORS
2.97

P'KG. OF FIVE MIDGET BULB REPLACEMENTS 29¢	P'KG. OF FIVE 7 1/2 WATT BULB REPLACEMENTS 44¢	ON-OFF LIGHT FLASHER 2.11	P'KG. OF 25 STICK-ON GIFT BOWS 69¢	1 1/4 LB. BOX HOLIDAY CANDY MIX 1.19	CANDY FILLED CHRISTMAS STOCKING 3.11	CHRISTMAS CENTER PIECES 1.29	BOX OF 200 DECORATIVE ICICLES 6.11	13 OZ. CAN SPRAY SNOW 59¢
6 1/2 OZ. CAN SPRAY PINE SCENT 59¢	U/L APPROVED CHRISTMAS LAMPS 1.29	U/L APPROVED ELECTRIC FIREPLACE 2.99	13 FIGURES NATIVITY SET 1.97	36" ROUND TREE SKIRT 1.69	RED FLOCKED NOEL LOG 77¢	6 1/2 INCH FLOCKED HOLLY BELL 77¢	34 INCH COTTON TREE SKIRT 77¢	BOX OF 200 ORNAMENTS HANGERS 5.11

189 WASHINGTON AVE., BELLEVILLE

1971
1972



BELLEVILLE HIGH School News

The information on this page is provided by the staff of the SPOTLIGHT.

WILLIAM HAMILTON
School Page Coordinator

Animal Farm In The School

By Anthony Buccino

There occurred many changes in our school during the previous year. Most of it was a result of a confrontation between the students and the administration. A stereo system was installed in the cafeteria and work has begun on a Senior Lounge. The Senior Lounge is more a dream and a rumor than it is a reality.

However, like the barn animals in ANIMAL FARM, the student's seemed to forget what a hassle it was to get so little. Last year's graduating class thought the hassle to be well worth it, it gave them a feeling of doing something for their school. The underclassmen probably agreed but were too busy being apathetic to really say anything about it.

The confrontation was a spontaneous walk-out during which our fire alarm began to ring. Within the confusion of students leaving because of what they thought to be a fire drill there were several students who decided to profit from the situation and formed a committee which, in the confusion, received recognition for some of the things for which the students were waiting.

In the confusion of a fire drill and student unrest, a quorum of police and firemen were called to the school. They stayed around until everything was settled.

On the day of the Moratorium, selected janitors stood at the doors to bar anyone from entering or exiting the school. The janitors seemed to be a security measure to keep everything the same throughout the day, to keep everything tranquil. They were gone the next day with the fear of disruption.

From that day forward, all students in the corridors had to have a pass or else what. Or else what never came into the picture. No student can pass from one corridor to another without fear of reproach for not bearing a hall pass. Many times, it takes longer for the teacher to write out the pass than the student is gone from the class. When the student returns to his class, the invaluable hall pass is deposited in the circular file of that room. From the circular file it is eventually transformed into ashes.

The concept of the hall pass should be abolished. When the inane hall passes are abolished some of the animosity for the administration will dissolve. Students who are late for the beginning of a class should have a pass to admit them to their class. High school is supposed to be the final prelude to life and/or college. It would be very silly if a man who is late for an appointment, to be kept late because he was two or three minutes late. Hall passes are obsolete in that the student would not be in the hall without the teacher knowing it. Disregarding any inept teacher who cannot control a class, no student will be out of a class without the consent and knowledge of the teacher.

Man Comes To Town

By Don Kowalski

He comes into town a stranger,

Though his family remains by his side;
He's wealthy and known to the people

By the shades and the car that he rides.

The people all hurriedly greet him,

Pushing and fighting for space;

Cigarettes, jewelry, and knick-knacks

Are peddled in front of his face.

But after the selling is over

They hate him with all of their wrath;

He's been cheated, robbed, and sneered at,

In sacrifice he is the calf.

And after his stay has concluded,

And his dollars are counted and kissed,

The people all shout out together, "Long live the gringo tourist!"

Dance Clinic Attended By Local Girls

On November 20, 1971, four representatives from BHS participated in the Modern Jazz Workshop at J.P. Stevens High School in Edison.

The schools that attended were members of the New Jersey Athletic Association of which Belleville is a member. Fifty schools attend that day. The girls who attended from Belleville were Donna Aylisi, Lorraine Nessine, Sue Chamberlain, and Dolores Sorroche. Dances were performed in groups and the girls created and exchanged dance steps.

On February 19, 1972, an "All Day Workshop" will be held at Trenton State College. Any girls interested may attend.

You can usually measure one's brain by the mouth, inversely.

Speak Free Politics Is Viewed

By Bill Hamilton

First of all, this is not New York City. Nor Chicago. We have no John V. Lindsay nor "Boss" Daley. The Presidential candidates will not (I don't think so, at least) make it a prime concern of their campaigns to visit Belleville. Yet Belleville is over-flowing with politics. I am amazed to see the Democratism and Republicanism displayed in a town this size. Please do not misunderstand. There is nothing really wrong with high level, full swing politics on the local level, I suppose. It does not bother me if some choose to spend their Sunday afternoons and evenings campaigning for someone. (I did it myself several times) Politics, despite popular opinion and proven fact, is not necessarily a shady or corrupt establishment. It is as much an American way of life as mom, apple pie, and the Viet Nam War.

Let me stop for a moment. There are people in government positions both here in Belleville and across the Nation that are good, hard-working, concerned individuals to whom we owe a great deal. I have, sincerely, no disrespect for them and I admire their determination. It is a shame that their good names have to be spoiled by the majority.

Realistically, the American system is based on Democratic elections. As a result of this, many candidates sharing the same basic ideas and policies, decided to ban together to form a "Political Party". Fine. But then the problems started.

When a group of people get together to oppose another group of people, it is called trouble. But when you get two opposing groups competing for the votes of a mass of people, then something far worse can develop...POLITICING! Suddenly the fake smiles appear; all the candidates are your friends with a hand-shake and a pat on the back. All the problems of the universe, everything from the Irish Potato famine to the price of prune juice, is blamed on the opposing party. Vote for the individual man and what he stands for and believes in.

Four Famous Artists Set At Area Museum
Four well-known New Jersey artists - Avery Johnson, Adolf Konrad, Joseph Domareki and Nicholas Reale - will be the instructors in the second session of the Montclair Art Museum's advanced painting class which begins next month.
The class is conducted in alternating sessions of instruction, open studio, and critical evaluation.

STARFLITE

atlantic
CASUAL LUGGAGE

THE COOL COMBO FROM

American Tourister
LUGGAGE

Amelia Earhart

LARGE SELECTIONS LEATHER GOODS

- Buxton • Rolfs
- St. Thomas
- Dopp Kits
- Melee

TRUNKS

ALL SIZES AND COLORS IN STOCK!

We Feature A Complete Line of NATIONALLY FAMOUS BRANDS

American Tourister, Atlantic, Samsonite, Ventura, Lady Baltimore, Amelia Earhart, & Oshkosh

CHRISTMAS SPECIALS

The First Choice of Travellers


Samsonite LUGGAGE

THE LUGGAGE WITH THE TROUBLE FREE LOCKS



PHIL'S LUGGAGE & LEATHER GOODS SHOP
(ALL FINEST BRANDS)
40 RIDGE ROAD, NO. ARLINGTON

PHIL RUSSO 998-0307




JOIN OUR 1972 CHRISTMAS CLUB!

And receive a bonus of one payment, which we will distribute to regularly completed Clubs.

Your completed Club means more spending money next Christmas!

\$ 1 Club paying in \$ 50.00	will receive \$ 51.00
\$ 2 Club paying in \$ 100.00	will receive \$ 102.00
\$ 3 Club paying in \$ 150.00	will receive \$ 153.00
\$ 5 Club paying in \$ 250.00	will receive \$ 255.00
\$ 10 Club paying in \$ 500.00	will receive \$ 510.00
\$ 20 Club paying in \$ 1,000.00	will receive \$ 1,020.00



PEOPLES NATIONAL BANK
AND TRUST COMPANY
BELLEVILLE, N. J.

Tri-City Office: BLOOMFIELD AVE. AT BELMONT
Main Office: FRANKLIN AVE. AT JARALMON



Shop every evening til 9 til Christmas

'Coral Reef' Loungewear by Lorraine!

A Kaleidoscope of Tropic shades in easy-care Antron® Nylon tricot that's darling to wash and wear. Culotte with vest, flamboyant cuffs sizes 32 to 38 (\$17) Long hostess gown, XS, S, M, L (\$20). Sea Fauna robe, XS, S, M, L (\$14). Fancy Pajamas, sizes 32 to 38 (\$14). Matching slippers (\$4). All in exciting shades dreamed up in the tropics!

Janette Nutley Center, Loungewear Shoppe, Main Floor

Janette Nutley Center

Fabulous Gift Wraps! Imagine! Over 45! Charge Accounts Welcomed!



FIFTH WEEK

GRAND OPENING

more food for your money Plus

10¢ OFF WITH THIS COUPON

Toward the purchase of 1 LB. CAN HILLS BROS. COFFEE 69¢ WITH COUPON

GOOD ONLY AT TWO GUYS One Coupon Per Customer. Good thru Sat. Dec. 11, 1971.

20¢ OFF WITH THIS COUPON

Toward the purchase of COFFEE MATE NON-DAIRY CREAMER 11 OZ. JAR

GOOD ONLY AT TWO GUYS One Coupon Per Customer. Good thru Sat. Dec. 11, 1971.

7¢ OFF WITH THIS COUPON

Toward the purchase of PILLSBURY BEST FLOUR 5 LB. BAG

GOOD ONLY AT TWO GUYS One Coupon Per Customer. Good thru Sat. Dec. 11, 1971.

12¢ OFF WITH THIS COUPON

Toward the purchase of GLAD FOOD WRAP 200 SQ. FEET

GOOD ONLY AT TWO GUYS One Coupon Per Customer. Good thru Sat. Dec. 11, 1971.

10¢ OFF WITH THIS COUPON

Toward the purchase of CHASE & SANBORN 1 LB. CAN COFFEE 69¢ with coupon value 1/20 of 1¢

GOOD ONLY AT TWO GUYS One Coupon Per Customer. Good thru Sat. Dec. 11, 1971.

25¢ OFF WITH THIS COUPON

Toward the purchase of AM JAR OF 46-OZ. SIZE VLASIC PICKLES

GOOD ONLY AT TWO GUYS One Coupon Per Customer. Good thru Sat. Dec. 11, 1971.

10¢ OFF WITH THIS COUPON

Toward the purchase of AJAX LAUNDRY DETERGENT 49 OZ. SIZE 59¢ WITH COUPON

GOOD ONLY AT TWO GUYS One Coupon Per Customer. Good thru Sat. Dec. 11, 1971.

12¢ OFF WITH THIS COUPON

Toward the purchase of 3 ROLLS BOUNTY JUMBO SIZE PAPER TOWELS

3 FOR 89¢ WITH COUPON

GOOD ONLY AT TWO GUYS One Coupon Per Customer. Good thru Sat. Dec. 11, 1971.

15¢ OFF WITH THIS COUPON

Toward the purchase of YUBAN COFFEE 1 LB. CAN

GOOD ONLY AT TWO GUYS One Coupon Per Customer. Good thru Sat. Dec. 11, 1971.

15¢ OFF WITH THIS COUPON

Toward the purchase of PRUF FABRIC FINISH 20 OZ. CAN 19¢ WITH COUPON

GOOD ONLY AT TWO GUYS One Coupon Per Customer. Good thru Sat. Dec. 11, 1971.

50¢ OFF WITH THIS COUPON

Toward the purchase of CHASE & SANBORN INSTANT COFFEE 10 OZ. JAR 89¢ WITH COUPON

VALUE 1/20 OF 1¢ GOOD ONLY AT TWO GUYS One Coupon Per Customer. Good thru Sat. Dec. 11, 1971.

8¢ OFF WITH THIS COUPON

Toward the purchase of CHIFFON REG. SOFT MARGARINE 1 LB. PKG.

GOOD ONLY AT TWO GUYS One Coupon Per Customer. Good thru Sat. Dec. 11, 1971.

Two Guys

FRUIT COCKTAIL

4 99¢

1 lb. cans

Two Guys

CUT GREEN BEANS or SWEET PEAS

6 99¢

1 lb. cans

Two Guys

PRINCE LASAGNA CURLEY

3 99¢

1 lb. pkgs.

Two Guys

PRIDE of COLOMBIA COFFEE

3-LB. CAN

\$1 89

Two Guys

ALL PURPOSE DETERGENT

BLUE ENZYME

48 oz. size

39¢

Two Guys

REYNOLD'S BROILING PANS

pkg. of 4

37¢

Two Guys

DRY CAT FOOD LITTLE FRISKIES

4 lb. pkg.

79¢

Two Guys

MARTINSON'S PREMIUM COFFEE

2 lb. can

\$1 59

Two Guys

LIQUID DETERGENT THRILL

22 oz. btl.

57¢

Two Guys

DETERGENT BOLD

10 lb. 11 oz. pkg.

\$2 79

Two Guys

VANITY FAIR REGAL PRINT BATHROOM TISSUE

4 roll pack

39¢

Two Guys

VANITY FAIR REGAL PRINT FACIAL TISSUES

3 boxes of 134 3-ply

79¢

Two Guys

MARTINSON'S FREEZE-DRIED COFFEE

4 oz. jar

79¢

Two Guys

BAKERY SPECIALS!

SQUARE or ROUND WHITE BREAD

5 1 lb. 6 oz. for \$1

Two Guys

LEMON MERINGUE PIE

large 8 inch

39¢

NABISCO CHOCOLATE MALLOMARS

8 oz.

43¢

SUNSHINE SUGAR WAFERS

12 oz.

39¢

WEEKLY BONUS SPECIAL

STAINLESS STEEL SAUCE PAN

Bakelite handle. 5/8 quart capacity.

REG. 98¢

68¢

WITH A FOOD PURCHASE OF \$2 OR MORE HOUSEWARES DEPT.

FROZEN FOOD DEPT.

BIRDSEYE INTERNATIONAL VEGETABLES

ALL VARIETIES

10 oz.

39¢

DOLE ALL VARIETIES FROZEN JUICES

6 99¢

6 oz. cans

GOLD KIST FRIED CHICKEN BREAST

10 oz.

59¢

12 oz.

59¢

BANQUET COOKIN' BAGS

MEAT LOAF-BEEF-SALISBURY-TURKEY-CHICKEN ALA KING 5 oz.

BEEF OR CHICKEN CHOW MEIN

7 oz.

5 99¢

4 6 oz. 89¢

9 oz. 59¢

6 oz. pkg. 79¢

12 oz. 59¢

PROGRESSO SALE!

CHICK PEAS

RED or WHITE KIDNEY BEANS

5 20 oz. cans 99¢

SPAGHETTI SAUCES

16 oz. jars

3 99¢

MEAT-MUSHROOM OR MARINARA

SOUP

MINESTRONE-LENTIL ESCAROLE OR BEANS & MACARONI

5 20 oz. cans 99¢

CLAM SAUCE

RED or WHITE

3 10 1/2 oz. cans 99¢

DAIRY DEPARTMENT

CHIFFON-SOFT MARGARINE

TWO 1 LB. TUBS

2 89¢

1 LB. BAG

BORDEN'S BIG TEN BISCUITS

SOUTHERN OR BUTTERMILK

6 99¢

TIP TOP FLORIDA CITRUS PUNCH

KRAFT CLAM-BACON & HORSE RADISH-ONION-BLUE

plastic 1/2 gal.

49¢

READY DIPS

AXELROD SOUR CREAM

8 oz. pt.

89¢

39¢

Two Guys FOOD SUPERMARKETS

KEARNY

175 PASSAIC AVE. (RIVER ROAD)

Open Daily 9:30 A.M. til 11 P.M.
Sunday * 10 A.M. til 8 P.M.
* For Sales Allowed by Law

OF VALUES!

OPEN DAILY
9:30 A.M. TIL 11 P.M.
SUNDAY 10 A.M. TIL 8 P.M.

Two Guys

NEW!

KEARNY FOOD MARKET

valuable trading stamps free!

YOU WILL!!

SAVE MONEY

\$\$\$

CHECK AND COMPARE

OUR PRICE AND TRIM!!



EVERY TWO GUYS STORE IS YOUR REDEMPTION CENTER

Yes, your filled books are good as cash at any Two Guys store! You don't need to make special trips to redeem them . . . and you're not limited to catalog selections based on full retail price. You can make your choice from anything in Two Guys tremendous assortments of merchandise and food, and take advantage of low discount prices.

SPEAK YOUR FILLED STAMP BOOK LIKE CASH WORTH \$2.25 IN ANY DEPARTMENT IN THE STORE INCLUDING FOOD!

TWO GUYS TRADING STAMP ONE BOOK SPECIAL YOUR BOOK SAVES 89¢ TOWARD THE PURCHASE OF

SWISS SPORT WATCHES Genuine Coin Dial Model. Bold Style Calendar Watch. Both with Unbreakable Mainspring.

REG. 12.97 YOU PAY \$4 PLUS ONE FILLED TWO GUYS TRADING STAMP BOOK JEWELRY DEPT.

SEE OUR WEEKLY ONE BOOK SPECIAL. YOUR STAMP BOOK CAN BE WORTH UP TO... \$20

GENUINE SPRING NEW ZEALAND

LEGS OF LAMB



OVEN READY WHOLE

69¢ lb.

BOTTOM ROUND BONELESS CROSSRIB ROAST



99¢ lb.

TRIMMED FIRST CUT

CHUCK STEAK

49¢ lb.

FRESH SWEET OR HOT ITALIAN SAUSAGE 79¢ lb.

ROCK CORNISH GRADE 'A' HEN 49¢ 1 1/4 LB. AVG. lb.

NO FAT - NO SKIN - ALL MEAT SEAMED EYE ROUND 1 39 lb.

GOV'T. INSPECTED CHICKEN LEGS 49¢ lb.

GENUINE SHOULDER LAMB CHOPS 98¢ lb.

OVEN READY - DELICIOUS GRADE 'A' DUCKS 59¢ lb.

SUGAR CURED SHOULDER SMOKED PICNIC 49¢ lb.

CITY CUT FRESH PICNIC SHOULDER ROASTING PORK 49¢ lb.

HYGRADE'S FAMILY SIZE BOLOGNA or LIVERWURST 59¢ 2-LB. AVG. lb.

CITY CUT COUNTRY STYLE SPARE RIBS

69¢ lb.

U.S.D.A. CHOICE BONELESS RUMP 1 35 lb.

OSCAR MAYER ALL MEAT FRANKS

79¢ 1 lb. pkg.

GOV'T. INSPECTED REG. STYLE CHICKEN BREAST 69¢ lb.

OSCAR MAYER ALL BEEF FRANKS

85¢ 1 lb. pkg.

STEER SLICED BEEF LIVER 49¢ lb.

U.S.D.A. CHOICE TOP ROUND ROAST

1 09 lb.

ARMOUR STAR MIRACURE SLICED BACON 79¢ VAC PACK lb.

U.S.D.A. CHOICE SILVER TIP ROAST

1 23 lb.

HYGRADE'S WEST VIRGINIA SLICED BACON 59¢ 1 lb. pkg.

WHOLE RDS. TOP BOTTOM CROSS RIB PRICED HIGHER

GROUND BEEF SALE

FRESH ALL BEEF GROUND BEEF 69¢ lb.

FRESH LEAN GROUND CHUCK 79¢ lb.

FRESH GROUND ROUND 89¢ lb.

PRODUCE DEPARTMENT

BANANAS GOLDEN RIPE



9¢ lb.

POTATOES U.S. #1 GRADE 'A'

10 39¢ lb. bag

CALIFORNIA NAVEL ORANGES

18

138 SIZE IN BAG

79¢

FRESH FLORIDA GREEN BEANS 35¢ lb.

FANCY CRISP CORTLAND APPLES 3 25¢ lb. bag

FRESH GREEN CUCUMBERS 2 29¢ FOR

U.S. #1 GRADE 'A' GLOBE

YELLOW ONIONS

3 33¢ lb. bag

APPETIZING DEPARTMENT

RICH'S ALL WHITE MEAT

CHICKEN ROLL

1/2 LB.

59¢

LAND O' LAKES WHITE OR YELLOW

AMERICAN CHEESE

79¢ lb.

PLYMOUTH ROCK COOKED SALAMI 79¢ lb.

TURKEY BOLOGNA

69¢ lb.

HYGRADE BRAUNSCHWEIGER

LIVERWURST

69¢ lb.

IMPORTED BULGARIA

CHOPPED HAM

69¢ 1/2 lb.

Two Guys COUPON SAVE 20¢ Toward the purchase of ANY PKG. OF ICE CREAM One coupon per customer. Good thru Sat., Dec. 11, 1971. KEARNY STORE ONLY NS/BT

Two Guys COUPON SAVE 20¢ Toward the purchase of ANY POUND or MORE BUTTER One coupon per customer. Good thru Sat., Dec. 11, 1971. KEARNY STORE ONLY NS/BT

Two Guys COUPON SAVE 20¢ Toward the purchase of ANY KRAFT 2 LB. VELVEETA One coupon per customer. Good thru Sat., Dec. 11, 1971. KEARNY STORE ONLY NS/BT

Two Guys COUPON SAVE 20¢ Toward the purchase of ANY JAR OR CAN OF COFFEE One coupon per customer. Good thru Sat., Dec. 11, 1971. KEARNY STORE ONLY NS/BT

Two Guys COUPON SAVE 20¢ Toward the purchase of ANY PKG. OF FRESH MEAT One coupon per customer. Good thru Sat., Dec. 11, 1971. KEARNY STORE ONLY NS/BT

Two Guys FOOD SUPERMARKETS

KEARNY 175 PASSAIC AVE. (RIVER ROAD)

OPEN DAILY 9:30 A.M. til 11 P.M. SUNDAY* 10 A.M. til 8 P.M. *For Sales Allowed by Law

We reserve the right to limit quantities. Not responsible for typographical errors. Prices effective thru Sat., Dec. 11, 1971.

Anthony Ascoli; Union Member

Anthony Ascoli of 52 Cleveland Street died November 30 in Clara Maass Memorial Hospital. He was 66.

Born in Long Island, Mr. Ascoli moved to Belleville in 1963. He had been a member of the Construction Workers Union Local 342 of Newark.

He is survived by his wife, the former Jean Palmisano; two daughters, Mrs. Rose

D'Amato and Mrs. Louis Ephraim; three brothers, Hugo, Almando and Richard; three sisters, Miss Mildred Ascoli, Mrs. Yolanda Caprio and Mrs. Edith Fuse-toal and two grandchildren.

A Burial Mass was offered December 3 in St. Peter's Church from the Amritage Funeral Home, Kearny. Interment was in Holy Cross Cemetery, North Arlington.

Andrew Howley; Mass Is Offered

A Mass was offered December 6 in St. Peter's Church for Andrew F. Howley of Hazlet, formerly of Belleville.

Mr. Howley died December 2 in Riverview Hospital, Red Bank. Born in Belleville, he moved to Hazlet nine years ago, and had worked as a chauffeur. He was 56.

Mr. Howley is survived by

his wife, Marie; a daughter, Mrs. Richard Spafford; a son, Robert; three brothers, John, Thomas and Gilbert; three sisters, Mrs. Margaret Little, Mrs. Mary Nugent and Mrs. Lucy Jeffers, and one grandchild.

Services were from Kiernan Funeral Home, and interment was in Glendale Cemetery, Bloomfield.

William J. Gray, 57; Here Over 50 Years

William J. Gray of 203 Washington Avenue died December 1 at home. He was 57.

Born in Newark, Mr. Gray lived in Belleville 50 years, coming here from Harrison. He had been a bartender.

He is survived by his wife, the former Ruth Remmes; three sons, Richard, Patrick

and Dennis, all of Belleville; three brothers, Thomas of Cliffwood Beach, Samuel and George, both of Belleville, and one grandchild.

Services were conducted December 4 at Kiernan Funeral Home. Interment was in Crest Haven Memorial Park, Clifton.

Mrs. John McNair Succumbs; From Newark To Belleville

Mrs. Ellen Mae McNair of 198 Linden Street died December 5 at home. She was 79.

Born in Newark, she came to Belleville 47 years ago. She is survived by her husband, John McNair.

Services were offered December 8 in the Kiernan Funeral Home by the Reverend Alfred W. Stone of Fewsmith Presbyterian Church. Interment was in East Ridgelawn Cemetery, Clifton.

M. Cafone; Proprietor

Michael Cafone of 257 Highfield Lane died December 3 in Clara Maass Memorial Hospital. He was 55.

A lifetime resident of Nutley, Mr. Cafone had owned a restaurant in Belleville. He was a member of St. Mary's Church and the Elks Lodge of Lyndhurst.

A High Requiem Mass was held Tuesday in St. Mary's Church from the Johnnesee Nutley Home for Funerals. Interment was in Immaculate Conception Cemetery, Montclair.

A. McKeown; Ex-Resident Succumbs

Arthur J. McKeown of Newark and formerly of Belleville died December 2 in East Orange Veterans Hospital. He was 58.

Surviving are his mother, Mrs. Elizabeth McKeown, and two sisters Mrs. William J. Byrne and Mrs. Margaret Bellay.

A High Requiem Mass was offered December 6 in St. Mary of Mt. Virgin Church, New Brunswick, from the Gleason Funeral Home, Somerset. Interment was in St. Peter's Cemetery, New Brunswick.

Frank H. Hunkele, 82; Was Yard Supervisor

Frank H. Hunkele of East Hanover and a member of the Belleville Exempt Firemen, died December 3 at home. He was 82.

Born in Newark, Mr. Hunkele worked 31 years as a yard supervisor in the Essex Generating Station for Public Service Electric and Gas Co. He retired in 1949.

He is survived by his wife, the former Theresa Schano; two daughters, Mrs. Regina LaRue of Indiana, and Mrs. Margaret Burch of Fla.; three sons, Francis of Nutley, Charles of East Hanover, and William of Parlin; a sister, Mrs. Tennie Nester of Cedar Grove, 22 grandchildren and

eight great-grandchildren. Funeral services were Monday in St. Peter's

Church from the Kiernan Funeral Home. Interment was in St. Peter's Cemetery.

AREA CODE 201
TELEPHONE 759-2879

Wadsworth Funeral Home

MANAGER
JAMES F. DESMOND

524 UNION AVE.
BELLEVILLE 9, N.J.

When Life's Last Page is Turned

Life's book is but the first, in the annals of eternity. That the funeral service may mark this bright beginning is our aim.

Kiernan

Non-Sectarian
Plymouth 9-3503

George E. Kiernan

Love your hair



New Wella Care Herbal Shampoo.
Washes natural beauty into your hair.

Now Wella has blended nine herb extracts, rare and fragrant, into a rich shampoo concentrate. Wella Care Herbal Shampoo makes hair silky and lustrous, gives it a wonderful extra-body feel. Helps fight dandruff, too. Available in Cream or Liquid Concentrate.

Herbal Shampoo	REG. \$2.00
Cream Concentrate	NOW \$1.69
Herbal Shampoo	REG. \$1.25
Liquid Concentrate	NOW 99¢
Herbal Hair Conditioner	REG. \$2.25
	NOW \$1.99

NEW GREAT-LASH MASCARA

from Maybelline

CONTAINS PROTEIN

Builds thickens colors & curls

REG. \$1.75

NOW \$1.49

	10's REG. \$1.89 NOW \$1.49		10's REG. \$1.79 NOW \$1.39
FITS ALL BAND RAZORS			

AT ALL ASSOCIATED NEIGHBORHOOD PHARMACIES

Obituaries

MODERN AUTO PARTS

CHRISTMAS SPECIAL!

LOW DISCOUNT PRICES !

MINI BIKES \$95 & up

HIGH PERFORMANCE PARTS
•WHEELS •HEADERS •SHIFTERS
•HELMETS ETC. •TOOL SETS

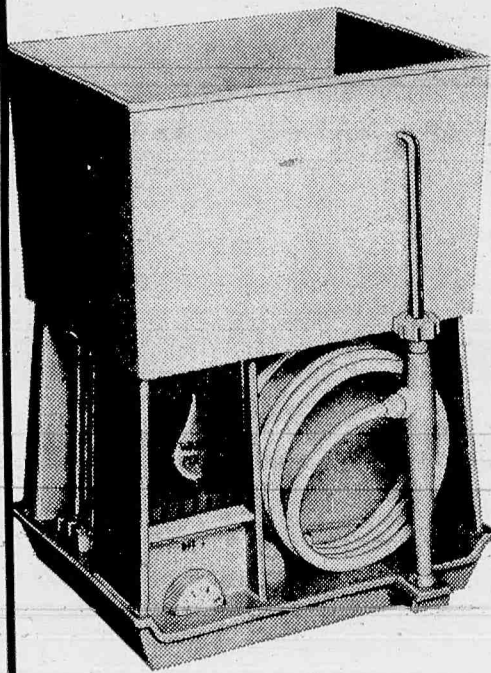
82 RUTGERS ST.
BELLEVILLE

WEEKDAYS &
SAT. - 8-6 P.M.

SUNDAY 10-1 P.M. 759-5555

THE IDEAL GIFT FOR BETTER FAMILY HEALTH

The professional, elegant
WaterPik
Oral Hygiene Instrument



Recommended by 4 out of 5 dentists for mouth care at home. Nine years of clinical studies have proved its effectiveness in removing food debris from around and between teeth. Provides 1,200 jet pulses of water per minute to flush out food and help massage gums.

Award-winning design, extra large reservoir, dust-free storage area for jet tips, wall bracket. Give a gift of health this year... give the WATER PIK Oral Hygiene Instrument.

Delux Model 37

REG. \$29.95

NOW ONLY \$27.95



5's REG. 79¢ NOW 54¢	4's REG. 89¢ NOW 69¢
10's REG. \$1.89 NOW \$1.49	8's REG. \$1.69 NOW \$1.39
15's REG. \$1.98 NOW \$1.59	

LANDOLFI Home for Funerals

N. A. Landolfi Jr.
MANAGER

503 Union Ave.
Belleville

759-7600

Ample Parking Air Conditioned

Mrs. M. Goldacker; In Cedar Grove

Mrs. Margaret Goldacker of 254 Joralemon Street died December 3 in Cedar Grove. She was 88.

Born in Syracuse N.Y., Mrs. Goldacker lived in Belleville 40 years.

She is survived by a daughter, Mrs. Margaret Platner of Titusville Fla.; a son, Roy also of Titusville, six grandchildren and 22 great-grandchildren.

Services were December 6 at Kiernan Funeral Home. Interment was in Crest Haven Memorial Park, Clifton.

Dedicated To Dignified Service

We anticipate the family's every need, while offering the utmost in service, experience and convenience within the means of all.

Serving All Faiths

Biondi Funeral Home

540 Franklin Ave., Nutley, N.J.
661-2400

Ample Parking

15-A. MERCHANDISE

15-A. MERCHANDISE

15-A. MERCHANDISE

R.C. CARPETS

600 BLOOMFIELD AVE
BLOOMFIELD, N.J.
(Heart of Bloomfield Center)

GRAND OPENING SALE

CARPETING
Moose-Roxbury-Sequoia, Sweetwater
Decorator Colors
• Shags • Plushes • Sculptured, etc.

RUGS & AREA RUGS
SPECIAL
9 x 12 SHAG RUG \$64

COMPLETE LINE OF TILE "AMTICO" "KENTILE" ETC.

FREE SHOP AT HOME SERVICE

748-5377

OPEN DAILY 9:30 A.M. - 4 P.M. 'TILL CHRISTMAS SATURDAYS 9-6 P.M.

CHRISTMAS TREES

CULTIVATED - SHEARED BALSAM-SCOTCH PINE

ALL SIZES AT REASONABLE PRICES!

See ART NUGENT

318 WASHINGTON AVE. BELLEVILLE
Next to Moscare's Music Store

VIOLET'S DRAPERY SHOP
Custom Made Drapes
Drapery Alterations
Installation of traverses rods and Drapes
375-7082 Ask for Violet

Amelia Frati
Nuttley
HEARING AID CENTER
Littles Pharmacy
547 FRANKLIN AVE.
BATTERIES ACCESSORIES
REPAIRS
Complete line of
Hearing Aids
667-0822 438-1042
2/17

DINING ROOM Duncan Phyfe table-4
chairs; Buffet & china 6 years old.
647-7355

3 piece living room set (sofa bed) 5
piece bedroom, TV, odds and ends.
Excellent condition. Reasonable. 32 A
Yale St., Nutley, Call 667-6845

15-B. ANTIQUES

16. WANTED TO BUY

OLD DOLLS

French, German, American. Any condition. Collector pays highest prices.

773-0663

A. GIORDANO & SONS WASTE PAPER

Highest prices paid for IBM cards, newspapers and almost any type of waste paper.

88 Malvern St.
Newark, N.J.
589-0896

Anyone interested in newspaper drives, PLEASE CALL!

PIANOS GRAND OR SMALL

Give Make & Asking Price
Call: 759-0242
9 A.M.-6 P.M.

SPOT CASH!!

For furniture, antiques, brick-a-brac, oriental rugs, jewelry, contents of homes, etc. Also appraisal services

THE AUCTION BLOCK

239-8921

TOP PRICES FOR ANYTHING OVER 40 YEARS

Brick-a-brac Paintings Furniture 1 Piece to Complete Homes
487-5253 224-9115
3/2/72

LIONEL TRAIN REPAIRS

Parts Sold Separately
FRANK ROCHAT
330 Hackensack St.,
Carlstadt
438-3087

17. PETS

6 MONTH OLD BEAGLE, male, AKC registered. Call 661-0393

15-B. ANTIQUES

DORA LEE ANTIQUES

GIVING A HOLIDAY GIFT

Antique Jewelry is our

"SPECIALTY"

- * CUT GLASS
- * CHINA
- * FURNITURE
- * PAINTINGS

563 Franklin Ave., Nutley
661-0971

Hours: Wed. Thurs. Sat. 11-5 PM.
Friday: 11-8 PM.

15-C. APPLIANCES

ALL MAKES AUTOMATIC WASHERS DRYERS, REFRIGERATORS, FREEZERS, air conditioners, repaired. Factory supervised. Philco and Bendix service 16 years experience. E. Crossley Service. 667-9276. TF

15-D. AWNINGS & SHADES

DAVIS-TAYLOR SHADE SHOP
Albert W. Taylor, Prop.
Wholesale-Retail
Window Shades Manufacturers
Venetian Blinds
350 Passaic Ave. 667-0491 TF

15-E. BOATS

25 ft. CUSTOM BUILT SPORTFISHERMAN 225
Helmsteering, gearshift, inboard v-8 All stainless steel fittings. Head, compass, rod holders, all safety equip. (Included). Call 667-6398 after 6 p.m. weekdays. TF

LAP BOAT (Grayson) 20 1/2 ft. Excellent condition. Call 667-1700 12/16

15-F. GUNS

GUNS BOUGHT SOLD EXCHANGED ALL GUNS M1 THING done on premises. Discounts 10% to 25%. ROSENBERG'S GUN SHOP 2266 SPRINGFIELD AVENUE UNION, N.J. 686-3989 1/20/72

15-G. KNITTING SUPPLIES

NUTTLEY KNITTING CENTER
LARGE SELECTION OF
* BERNAT YARNS
* BRAND NAMES
* NEEDLE POINT
* KNITTING BOOKS
Instructions given
380 Centre St. Nutley
667-6888 4/13

15-H. MATTRESS

MATTRESSES
Guaranteed better bedding buys
Mattresses made to order.
Renovating same day service. Also all name brands.
CUSTOM MATTRESS MAKERS
85 Franklin Ave. Nutley
667-0764 TF

15-I. REFRIGERATORS

WASHERS & DRYERS REFRIGERATORS FREEZERS
SALE REFRIGERATION SERVICE
661-3275 3/1/72

WANTED TO BUY

SPINET OR UPRIGHT, Good condition. Reasonable. Call 482-7209

18. MISC. SERVICES

GENERAL HANDYMAN

on all types home repairs. Replace window cords, faucet washers doorbell repairs & etc also light moving.

991-1278 3/30/72

MINOR ALTERATIONS

Hens, etc. Dresses and pant suits made from patterns.

667-3627 12/16

STEAMMASTER CARPET CLEANERS

Modern method deep clean extraction of dirt & soil.

Free Estimate 676-0850 12/9

DRESSMAKING "LADIES"

IN MY HOME REASONABLE 472-4160 after 5 P.M. 12/23

ODD JOBS

I'll do anything for you! PAINTING, MAINTENANCE, REPAIRS, CELLARS, ATTICS, EXTERIORS. Satisfaction guaranteed.

Mister J. 667-1494 4/13/72

ANCO IS THE ANSWER FOR RCA
5 PARK AVE
NUTLEY 667-1918

18-B. CLEANING & DYEING

FRANKLIN
Cleaners & Dyers
Drapes-Curtains-Slipcovers
Suede & Furs
Radio Dispatched
Delivery Service
Call 759-5884
112 Franklin Street
Belleville 12/16/71

TOZZI CLEANERS

Tailoring • Shirt Laundry
Same Day Service
Pick Up & Delivery
100 Centre St. 667-0372 Nutley
393 W. Passaic Ave., Bldg. 338-8124 2/24/72

Plaza French Cleaners

Drapes - Curtains
Slipcovers-Tailoring
TUXEDOS FOR WIFE
Prompt Pick-Up & Delivery
Dial 667-2105
248 Centre St., Nutley 2/24

COMPLETE DRAPERY SERVICE

Decorator Fold
TAKE DOWN & RE-HANG
FOR THE FINEST & QUICKEST SERVICE
759-9687
Drive-In & Launderers

JOLLY CLEANERS
300 WASHINGTON AVENUE - BELLEVILLE
4/20/71

18-C. JUNK DEALERS

F. CONSTANTINO SONS

We Buy
PAPER-RAGS-METAL-MATTRESSES
SINKS-BATHTUBS-FURNACES
CLEAN CELLARS
WE PICK UP
PL9-2613 TF

BRING IT IN!

• COPPER-BRASS
• ALUMINUM
LEAD • BATTERIES-
CAST IRON • STEEL
PAPER RAGS
TOP PRICES
KEARNY SCRAP METAL
478 Schuyler Ave., Kearny
991-0432 2/17

18-E. MOVING & STORAGE

A&B MOVING & STORAGE CORP
Agent For
Engel Van Lines
Local & Long Distance
Moving
Hourly Rates
Free Estimates
Loads insured
in transit.
991-0915
991-4620 991-4410
12/24

18. MISC. SERVICES

DRESSMAKING

• ALTERATIONS
• REPAIRS
REASONABLE
CALL
661-1075 12/9

18-E. MOVING & STORAGE

LIGHT HAULING APPLIANCES & FURNITURE

Take out old Appliances
EVEN, & WEEK-ENDS
REASONABLE RATES
667-6314 3/2/72

MOVING and HAULING D & B HOMESCH

Recent ex-serviceman,
experience, reliable,
reasonable, free estimates.
987-1626 3/16/72

JOS. RAASER MOVING & STORAGE

Shipping, Packing, Crating
Across the Street or
Across the Country
FREE Estimate, No Obligation
759-1824
494 Cortlandt, Belleville
Owned & Operated by Robert Raaser 2/24/72

18-F. PIANO TUNING

EXPERT PIANO TECHNICIAN

35 Yrs. Experience
all makes
TUNING-REPAIRS
RE-BUILDING-REFINISHING
BOUGHT-OLD
J.W. GIGLIO
759-2614 2/10/72

18-G. RECREATION

SUN GLO CORP.

BILLIARDS RECREATIONAL
SHUFFLEBOARDS & ACCESSORIES
BOCCIE
DOMESTIC & IMPORTED CUES
GENUINE BELGIAN BALLS
111 Neckel St.
Belleville, N.J. 07109
759-4474 2/24/72

18-H. T.V. SERVICE

T.V. SERVICE

BUY 1-19" PORTABLE TV
FOR \$45. One year on pix
tube, 90 days on parts and
labor. Get 1-7 transistor
radio free. Note our new
name and address:
KNIGHTS TV
929-9537
266 Lyons Ave., at Clinton
Pl. Newark. Bill Pool,
formerly with Sky View. 12/16

FERRARO'S TELEVISION SERVICE

Serving
ESSEX & BERGEN & HUDSON
Counties
Call
759-6300
24 Hr. Service
7 Days A Week
Color Specialists
Color Antennas
Installed
Rentals
T.V. SERVICE
2/24/72

Belleville Service Center

Color & B&W
Specializing in
OVER THE
COUNTER
REPAIRS
759-3717
484 Washington Ave., Belleville
(Corner Washington & Little)
3/24/72

ANCO IS THE ANSWER FOR ALL MAKE T.V. SERVICE

257-0421 AVE
NUTLEY, N.J. 07110 TF

19. HOME IMPROVEMENTS

ALFANO CONTRACTORS INC.

General Home
Improvements
* PANEEING
* PAINTING
* ADDITIONS
Free ESTIMATES
484-2280-991-3483
667-4401 12/23

Let ARTCRAFT Give Your Old Address A New Look.

We Specialize In:
Kitchens Bathrooms Carpentry
Rec. Rooms Additions Heating
Plumbing Electrical Work
COMPLETE BURGALAR AND FIRE ALARM SYSTEMS-VIOLATIONS REMOVAL-FIRE ESTIMATES-BAIRN FINANCING AVAILABLE
call ARTCRAFT
CONSTRUCTION CO., Inc.
for free estimate (24 hr service)
998-3151 998-9292 12/9

HOME ALTERATIONS

* Steps
* Sidewalks
* Patios
* Retaining walls
* All types of plastering
* Scaffolding
* Sheet rocking
* Painting
CARMINE MICCICHE
609 E. Passaic Ave., Bloomfield
328-0031 2/17

BELLO'S ELECTRIC SERVICE

LICENSED
ELECTRICIAN
COMPLETE HOME
WIRING
WE SPECIALIZE IN:
100 AMP, 220 LINE
FREE ESTIMATE
CALL ANYTIME
667-0919 2/17/72

"CALL US" FOR PROMPT AND COMPLETE ELECTRICAL SERVICE

D&D ELECTRIC
Belleville
751-2782 TF

THOMAS SIBILIA, Painting and decorating.

For the right prices and mechanics to do the job call us today. 673-0905 or 678-2656 TF

PETE'S PAINTING

Interior & Exterior light carpentry work. Estimates cheerfully given.
751-4881 4/1/71

19. HOME IMPROVEMENTS

LOUIS V. LEPRE

(IN BUSINESS 20 YEARS)
GENERAL CONTRACTOR
4 STEWART AVE. NUTLEY
INSTALL ARMSTRONG
CEILING BLOCKS
SHEET ROCK &
SUSPENDED CEILINGS-
HOME IMPROVEMENTS
CEILING TILE
667-2382
FREE ESTIMATES 1-6-72

ACOUSTI-CEILING

Residential-Commercial
FREE ESTIMATES
"Ceilings-Our Only Business"
• Suspended
• Mineral
• Fiberglass Tile
575-1444
Call anytime 12/28

19-B. BATHROOMS

BATHROOM REMODELING

We Do The Complete Job Including Painting!
Famous Brand Fixtures
American Olean Ceramic Tile.
Custom Made Vanity.
All Work Guaranteed. Call Anytime For Free Estimate.
CARLO MEGNA
743-4126
Prompt Service on Repairs 12/23

VIOLA BROS. INC.

180 Washington Ave.
Nutley
COMPLETE LINE OF
Building Materials
NO 7-7000 2/24/72

19-B. BATHROOMS

...Let Me Customize Your Bathroom

From Expert Planning to Completion
AT
OUR LOW PRICE
FREE ESTIMATES
CALL
CUSTOM BATHS
743-5488
Financing Arranged Prop. MIKE SCANNIELLO 1/27/72

19-C. CARPENTERS & BUILDERS

CARPENTRY PANEEING

CEILING
Block-Suspended-Dropped
WINDOWS RE-CHAINED
ODD JOBS
WALTER COLE 759-7391
2/10/72

CARPENTERS & BUILDERS

20 YEARS EXPERIENCE
GENERAL REPAIRS
NO JOB TOO SMALL!
751-3115 4/1/72

19-E. ELECTRICIANS

FOR PROMPT SERVICE CALL MARESE

ELECTRIC INC.
667-0140 667-2426
FREE ESTIMATES
ALL WORK GUARANTEED TF

LIVE BETTER ELECTRICALLY WITH FULL HOUSEPOWER.

For free estimate phone Larson's Electric Service, 658 Belleville Ave. 24 hour Answering Service. 759-9262 State Licensed. TF

19-H. FLOOR SERVICE

FLOORS SANDED REFINISHED and waxed

American Floor Sanding Company. George Ingels, 667-5887. TF

RUG SHAMPOOING & FLOOR WAXING

All work guaranteed & insured. Repairs, pick-up & relay. No minimum fee. Call: 743-8363 or 759-2697 3/24/72

FLOOR WAXING RUG SHAMPOOING

All work done by owner Bob Berninger. 667-1121 TF

KILLEN FLOOR SERVICE

SANDING
FINISHING
Estimates Insured Statewide
Gymnasium Game Markings
R.L. KILLEN
759-6954 2/29/71

19-I. LANDSCAPING

LANDSCAPING PAVING EXCAVATING

Water problems solved
For service and experience call
Armando Vocaturo
759-6640 TF

19-K. MASONRY

PLASTERING & INTERIOR PAINTING

Neat-Clean work
Experienced
REASONABLE
Quick Service
Free Estimates
991-1278 3/30/72

19-L. PAINTING

PAINTING AND DECORATING

Interior and Exterior
Neat and Clean
Call Now
667-5747
JAN O'CONNELL TF

THOMAS SIBILIA, Painting and decorating.

For the right prices and mechanics to do the job call us today. 673-0905 or 678-2656 TF

PETE'S PAINTING

Interior & Exterior light carpentry work. Estimates cheerfully given.
751-4881 4/1/71

ATTENTION HUSTLERS!! Better Than Wholesale Prices

- Contrace Pantyhose \$6.80 dozen
- Ladies (change a stone) rings & bracelets
- 8 Track tapes, \$1.25-\$2.30
- Ladies wet look and Graining Boots
- Ladies & Men's watches
- Pantsuits and dresses \$4 & up
- Many different toys for Christmas
- Perfumes & Jewelry
- Ladies & Childrens bubble umbrellas \$30. dozen
- Christmas lights and decorations
- Car & home Stereo equipment

ALL AT WHOLESALE PRICES! CAPITAL SALES

3 Cleveland St. Belleville, N.J.
Open 6 days a d nights, 11-5 & 8-11 P.M.
759-9803 12/30

YARD SALE - December 11th,

10-5 p.m. rain or shine, new toys, new auto accessories, new Christmas tree lights and bulbs. All sold below wholesale prices. No reasonable offer refused. 49 Evergreen Avenue, Nutley.

HILDA'S FURNITURE

3-pc. Living Room set- \$115.95
4-pc. Bedroom set- \$114.95
5-pc. Dinette set- \$32.95
Twin Size Hollywd. bed- \$37.95
Full Size Hollywd. bed- \$57.95
50 4th Ave.
NEWARK, N.J.
across from Newspaper 12/24

DRUMS: 4 piece Blue Pearl, 7 cymbals

and stands. Very good condition. 681-0725 after 6 pm.

EXERCYCLE-2 way,

19-L. PAINTING

E & M PAINTING CONTRACTORSInterior & Exterior
Painting.

Fully Insured.

743-7330 748-6816
12/23**DOES YOUR HOUSE NEED PAINTING****JOHN GRACZYK**General Contractor
Interior and Exterior Painting
Fully Insured - Free estimates
667-4469
Call after 5:30 P.M. or all day Sat.
& Sun.

TF

PAINTING WITH DUTCH BOY1 Family House
Outside or Inside \$125.
2 Family \$225
3 Family \$325
6 Family \$475 & up
Rooms-Hallways-Stairs
Offices, \$20 & Up
also
CARPENTRY, VIOLATIONS
FIRE JOBS
VERY REASONABLE
FOR FREE ESTIMATES &
MINOR REPAIRS
COMMERCIAL & RESIDENTIAL374-5436 926-2973
12/23**"DECORATING" PAINTING & PAPERHANGING**INTERIOR & EXTERIOR
FULLY INSURED**DAVID LAUTENSCHLAGER**199 Highland Lane
Nutley687-4037 After
6 P.M.

TF

WALTER PETERS Painter & DecoratorWallpapering & Vinyl
Clean Work, Free Estimate
751-0447242 Washington Ave., Belleville
3/2/72**PAINTING-PAPERHANGING**Many Years of Experience
In Germany
FULLY INSURED
All Work Guaranteed**Mr. ISCIL**

678-2325

12/30

DOM INNAMORATO Painting and PaperhangingLong experience. Clean, neat work.
Estimate given. 667-8622.

TF

19-M PLUMBING & HEATING

PLUMBING & HEATING SUPPLIES

SINKS-KITCHEN CABINETS

Electrical Supplies Vanities
Made to Order Pipes Cut &
Threaded.**EAST RUTHERFORD PLUMBING SUPPLY CO.**234 Paterson Ave.,
E. Rutherford

933-1430

12/30

WINDHEIM PLUMBING HTG.418-20 Franklin Ave.
Nutley

667-6886

12/9

14-A. AUTOS FOR SALE

19-M PLUMBING & HEATING

14 New Street
Belleville

759-1476

KEEP YOUR PLUMBING YOUNG J.G. YOUNG & SONS INC.**PLUMBING & HEATING**Repairs Alterations Residential Commercial Industrial Remodeling New Construction
3/16**DEL SWARTZ**PLUMBING and
HEATING CONTRACTOR
REPAIRS and INSTALLATIONS642 Passaic Ave., Nutley,
FREE ESTIMATE
667-1614
Call after 6 P.M.

3/20/72

ECONOMY PLUMBING & HEATINGComplete Plumbing & Heating
Service and Installation
Guaranteed Sewer &
Drain Service
FREE ESTIMATESHARRY JACQUIN, Prop.
133 Newark Avenue,
Bloomfield

748-5390

12/9

SUBURBAN PLUMBINGRepairs & Alterations
Gas Heating-Automatic Hot
Water Heaters. Licensed and
Bonded.Electric Sewer Cleaning
BERNARD E. O'CONNOR
759-7356

TF

WILLIAMS SALVATORE24 Hour Service
BATHROOMS
Completely Remodeled Plumbing
Gas Heating Repairs and
Alterations Electric Sewer
Cleaning.

Free Estimates 759-0890

TF

19-N ROOFING & SIDING

Belleville Roofing Co.(Est. 1955)
Alum. Siding - Free Estimates
NEW GUTTERS - LEADERS
(Cleaning)Soffit & Fascia Enclosures
WORK GUARANTEED
759-1791

TF

ROOFING SIDING LEADERS GUTTERSAll Types Of Repairs
EMPIRE ROOFING & SIDING CORP.338-7251 661-5046
4/3/72**HI-LO ROOFING CO.**667-4490 2 Plain St.
Nutley. Install hot tar roofs,
shingles leaders & gutters & state
repairs. Fully Insured. All work
guaranteed. Free estimates
Industrial & residential

TF

DON'T MOVE!! IMPROVE J. KUJARROOFING & SIDING
GUTTERS, REPAIRS &
CARPENTRY759-2672
Free Estimates 1/8/72**BELLEVILLE-NUTLEY ROOFING**GUTTERS-LEADERS
CHIMNEY REPAIRS
Insured-Guaranteed.

759-9585 3/16/72

14-A AUTOS FOR SALE

19-M PLUMBING & HEATING

19-O. TILE CONTRACTORS

MARALDO TILE & TERRAZZO CO.Industrial-Commercial
Residential-Repairing
62 Union Avenue
667-3021

TF

FORTE TILECUSTOM WORK
Neat-Efficient
REPAIRS
SHOWER ENCLOSURES
Call Anytime 657-8253

3/2/72

'Messiah' Presented This Sunday**The Oratorio Society of New Jersey and the First Church Choir will present Part I of Handel's "Messiah" this Sunday, at 4 p.m., at the First Congregational Church, 40 South Fullerton Avenue, Montclair. Nixon Bicknell is the organist-director.**

The public is invited to come and join in the singing of the "Hallelujah Chorus," which will close the program.

Soloists for the performance include Sandra Bicknell, soprano, and Frederick Weidner, tenor.

Sandra Bicknell is well known locally as a recitalist, having performed at the Montclair Music Club and with the Oratorio Society. She has also appeared with the Schola Cantorum, Musica Aeterna, Amor Artis, the Cameraata Singers, the Bach Aria Group, and with the American Symphony Orchestra under the direction of Leopold Stowkowski. She has appeared on the Bell Telephone Hour and in the "Joy of Singing" series in Town Hall. A graduate of Tulsa University, she has studied with Walter Johnson, Lili Wexberg and Winifred Cecil of New York. Frederick Weidner, tenor, has previously appeared with the Oratorio Society. He received his degree from Bowdoin College and continued his vocal studies with Metropolitan Opera tenor Paul Althouse. He won a Fulbright Scholarship for study in Germany and became the first lyric tenor at the Pfalztheater Opera in Kaiserlautern.

**Sunbank Newspapers**

NUTLEY, N.J. 07110

You'll see by the paper what's new, what's going on, what's to do. In your newspaper, your whole family finds entertainment and information. What's more, your newspaper is your marketplace, where advertising competition thrives, and you discover how to get best values from your shopping dollars.

NUTLEY SUN**BELLEVILLE TIMES****NEWARK RECORD****ACCENT SUBURBIA****667-2100**

Introducing portable **Chromacolor** that outcolors, outbrightens, outdetails, and outperforms every other color tv its size!

The PEALE • C3722W - Grained Kashmir Walnut color.
• Handcrafted Chassis • Chromacolor Picture Tube
• Super Video Range Tuning System • Automatic Fine-tuning Control • VHF/UHF Spotlite Dials • 5"x3" Speaker • Top Carry Handle • VHF Dipole Antenna • UHF Loop Antenna.



Sheer brilliance in a new 1972
Zenith Compact Chromacolor

The DEGAS • C4030W - A big SUPER-SCREEN picture in a compact-size cabinet. Grained American Walnut color. • Titan Handcrafted Chassis • Chromacolor Picture Tube • Solid-State Super Video Range Tuner • Automatic Fine-tuning Control • Automatic Tint Guard Control • VHF/UHF Deluxe Spotlite Panels • 5"x3" Twin-Cone Speaker.

NOW FAMOUS

ZENITH

handcrafted

CHROMACOLOR

COMES IN SMALL...MEDIUM...LARGE...EXTRA-LARGE!

with a picture so much brighter...
so much sharper...with so much
greater contrast and detail
you really have to see it to see it!



World's finest color picture!
Giant-screen **Chromacolor 100 console**

The BASSANO • C4728 - Mediterranean full base console with casters. • Chromacolor 100 Picture Tube • New Customized Tuning • 25" diag. Super-Screen Picture • Titan 100 Handcrafted Chassis • Super Gold Video Guard Tuner • AFC - Automatic Fine-tuning Control • Automatic Tint Guard Control • 5" Round Twin-Cone Speaker • VHF/UHF Deluxe Spotlite Panels.



Greater brilliance!
Sharper detail!

Chromacolor console

The LAWRENCE • C4512W - Contemporary styled compact console. • Titan 80 Handcrafted Chassis • Chromacolor Picture Tube • New Customized Tuning • Super Video Range Tuner • Automatic Fine-tuning Control • Automatic Tint Guard Control • 5"x3" Twin-Cone Speaker • VHF/UHF Spotlite Dials.

CHROMACOLOR...
Only Zenith has it!

There's not a bad one in the lot.*

After all, we've been neighbors too long to play games. Every Lynn Used Car is thoroughly inspected and serviced (and we only keep the cream of the crop). But don't take our word for it... each and every car is backed up by a 30 day (no cost to you) warranty. And that goes for everybody.

1971 MALIBU COUPE-Air \$2995	1969 IMPALA-Air \$1495	1965 MUSTANG \$895	1966 BEL-AIR \$695
1969 SUNBEAM ALPINE \$695	1968 BEL-AIR \$1295	1965 MUSTANG \$695	1966 PONTIAC TEMPEST \$995
1970 NOVA \$1995	1966 MALIBU \$895	1967 CAPRICE \$1095	1965 OLDSMOBILE 98-Air \$995

"Everybody can fit in!"

Lynn
CHEVROLET

461 KEARNY AVENUE, KEARNY, N.J.

991-8350

NUTLEY ELECTRICAL CO.

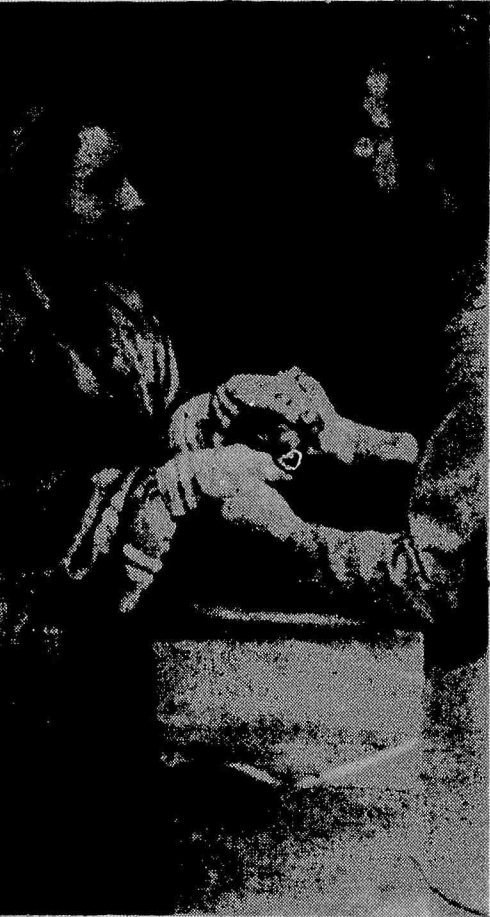
Electrical Supplies & Appliances

226 FRANKLIN AVE. NUTLEY, N.J.

667-6464



Local Man Plays Part In Drama



APPEARING in the recent production of Chekhov's 'The Cherry Orchard,' presented last month by the Montclair State College players was Thomas Tofel of 2 Jerome Avenue, Belleville, in the lead role. Here he is with Lavinia Plonka of Denville.

Wins Role

Belleville Girl Sings 'Music'

Sister Ignatia Clare Walsh, principal of East Orange Catholic High School, has announced that Cathie Ferguson, daughter of Mr. and Mrs. Frank Ferguson of Crestwood Avenue, has won the role of Louisa in the production of "The Sound of Music by EOCH's Class of '27.

Seton Hall Production For Madara

Robert Madara, son of Mr. and Mrs. William Madara of 24 Parkview Avenue, appeared as Snout in the Seton Hall University Production of Shakespeare's "A Midsummer Night's Dream."

Madara is a graduate student of English at the university, and has been actively involved in many of the theatre's past productions.

Performances were given December 2,3,4, and 9,10,11 at 8:30 p.m. Matinees were scheduled for December 3 and 9 at 2:00 p.m.

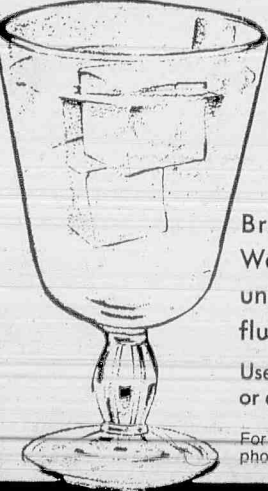
Tickets are \$2.50 for evening performances and \$2.00 for matinees. Group rates are available.

S. A. T.
REVIEW COURSES
NEW APPROACH
Classes in West Orange
For Information Contact
BROSKIE SCHOOL
ONE NORTH HAVEN RD.
EAST ORANGE, N.J. 07027
301 676-6142

Did you know that 'JNC' has over (45) unusual, lovely, elegant exclusive gift wraps for your Holiday gifts! It's true.



Brookdale DEEP WELL ARTESIAN WATER



TASTE THE DIFFERENCE

Brookdale Artesian Water is 100% pure, untainted by chlorine, fluorides & detergents. Use it for every drinking or cooking purpose.

For the dealer nearest you, phone 472-6900.

BROOKDALE ARTESIAN WATER CERTIFIED LAB ANALYSIS

Odor	No objectionable odor	Magnesium	11.00
Color	7.0 — APHA Platinum Cobalt Standard	Total Chromium	0.00
Taste	No objectionable taste	Nitrates	12.20
Turbidity	2.00 Jackson Units	Sulfates	260.00
pH	10.00	Phosphates (Ortho)	0.00
	B.p.m.	Chlorides	60.00
Iron	0.00	Fluorides	0.00
Manganese	0.00	Total Dissolved Solids	360.00
Copper	0.00	Total Hardness	238.00 or 14 Grains
Calcium	227.00		
Sodium	53.00		

THIS WATER MEETS CHEMICAL STANDARDS FOR DRINKING WATER POTABILITY. HAS EXCELLENT TASTE, ODOR, AND CLARITY.

The special gift for your nature lover! Vanity Fair's fashion ensemble with leopard markings! it's something special!

What a beautiful Christmas gift collection from Vanity Fair...the prow power of these exciting fashions can add "instant excitement" at Christmas morn! Here, our stunning group of sinuous sleep-things in Antron Nylon III, and a coachman's robe of Shevela, ® the washable Dacron ® polyester that looks and feels like Velvet. All beautifully washable of course. Long gown, sizes 32 to 38 (*20) Floaty sleep shift, sizes 32 to 38 (*12.) Black pant pajamas, sizes 32 to 40 (*17) Short gown P.S.M, (*12) extra Lg. (\$13), Short Robe sizes, 32-12 (\$20) Shevelva® Coachman's Robe. Sizes 10 to 18 (\$40). Fabulous and naturally, just a few gift ideas from our Vanity Fair gift Collections.

Janette Nutley Center, Holiday Lounge, Main Floor

Janette Nutley Center

Park in the spacious Municipal Plaza and use 'JNC's' convenient Rear Entrance.

Open or use your Personalized 'JNC' charge or most major charge accounts are honored.

Naturally, if you wish, 'JNC' offers Beautifully Wrapped Gift Certificates.

